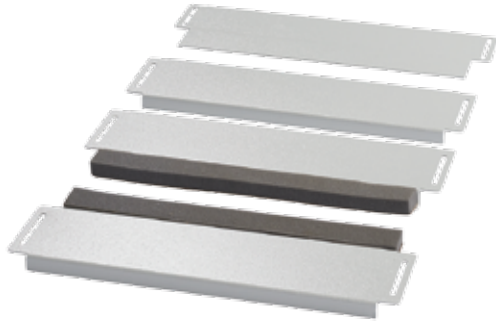


PROLINE G2 GLAND PLATE



APPLICATION

Gland plates are used with a plinth base to provide cable management solutions while maintaining a NEMA 12 rating. PROLINE G2's unique Duro-Stand Gland Plate was designed to bear the weight of a person, making it easier to work on the enclosure when the gland plate is installed.

FEATURES

- Consists of a base mounting surface and adjustable foam-gasketed gland plates that permit cable entry
- Sturdy, adjustable gland plates designed to bear the weight of a person

SPECIFICATIONS

- Galvanized or painted versions
- Sealed to maintain NEMA Type 12 rating
- 14-gauge (1.75 mm) mild steel or galvanized
- Number of plates varies with depth: 400 mm (2 plates); 500 mm (3 plates); 600 mm (4 plates); 800 mm (6 plates); 1000 mm (8 plates)
- Can be used with Plinth Base (100 mm or 200 mm), 100 mm Solid Plinth Base, Mobile Base or Transportation Base
- Can be used without a base if casters, levelers or frame feet are installed
- Can be rotated 180 degrees for front or rear cable entry
- Installation hardware included
- Includes additional foam gasketing which can be applied to reposition the gasketed opening towards the center of the cabinet

EMC Gland Plates – Additional Specifications

- Plated to provide corrosion resistance while maintaining a metal to metal contact with the metal fiber gasket
- Metalized non-woven fabric EMI/RFI material covering UL94HP rated urethane foam gasket
- Plating exposed in interior and paint over plated exterior

FINISH

- For painted versions:
- Polyester powder paint; RAL 7035 textured light grey standard
 - Custom colors available

ACCESSORIES

- Plinth Base
- 100 mm Solid Plinth Base
- 200 mm Solid Plinth Base
- Mobile Base
- Transportation Base
- Casters
- Levelers
- Frame Feet

BULLETIN: P40

Standard Product

Catalog Number	Fits Nominal Frame W x D	Finish
P2BGP45	400 x 500	Painted
P2BGP45G	400 x 500	Plated
P2BGP46	400 x 600	Painted
P2BGP46G	400 x 600	Plated
P2BGP64	600 x 400	Painted
P2BGP64G	600 x 400	Plated
P2BGP65	600 x 500	Painted
P2BGP65G	600 x 500	Plated
P2BGP66	600 x 600	Painted
P2BGP66G	600 x 600	Plated
P2BGP66HF	600 x 600	EMC
P2BGP68	600 x 800	Painted
P2BGP68G	600 x 800	Plated
P2BGP84	800 x 400	Painted
P2BGP84G	800 x 400	Plated
P2BGP85	800 x 500	Painted
P2BGP85G	800 x 500	Plated
P2BGP86	800 x 600	Painted
P2BGP86G	800 x 600	Plated
P2BGP86HF	800 x 600	EMC
P2BGP88	800 x 800	Painted
P2BGP88G	800 x 800	Plated
P2BGP810	800 x 1000	Painted
P2BGP810G	800 x 1000	Plated
P2BGP104	1000 x 400	Painted
P2BGP104G	1000 x 400	Plated
P2BGP105	1000 x 500	Painted
P2BGP105G	1000 x 500	Plated
P2BGP106	1000 x 600	Painted
P2BGP106G	1000 x 600	Plated
P2BGP106HF	1000 x 600	EMC
P2BGP108	1000 x 800	Painted
P2BGP108G	1000 x 800	Plated
P2BGP124	1200 x 400	Painted
P2BGP124G	1200 x 400	Plated

Catalog Number	Fits Nominal Frame W x D	Finish
P2BGP125	1200 x 500	Painted
P2BGP125G	1200 x 500	Plated
P2BGP126	1200 x 600	Painted
P2BGP126G	1200 x 600	Plated
P2BGP128	1200 x 800	Painted
P2BGP128G	1200 x 800	Plated
P2BGP164	1600 x 400	Painted
P2BGP164G	1600 x 400	Plated
P2BGP165	1600 x 500	Painted
P2BGP165G	1600 x 500	Plated
P2BGP166	1600 x 600	Painted
P2BGP166G	1600 x 600	Plated
P2BGP168	1600 x 800	Painted
P2BGP168G	1600 x 800	Plated
P2BGP185	1800 x 500	Painted
P2BGP185G	1800 x 500	Plated
P2BGP186	1800 x 600	Painted
P2BGP186G	1800 x 600	Plated
P2BGP188	1800 x 800	Painted
P2BGP188G	1800 x 800	Plated

Gland Plate Requirement

Nominal Depth	No. of Plates
400	2
500	3
600	4
800	6
1000	8

