

Power Xpert Insight™ Technical Data Sheet

Introduction

Eaton's Power Xpert Insight is a power and energy monitoring system that is designed to be easy to install, easy to update and easy to use. It provides you with the energy and power information you need to:

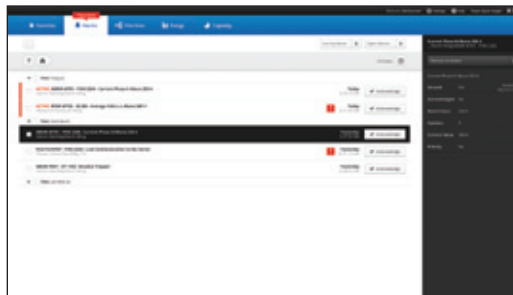
- Keep the lights on with real-time, actionable alarms across desktop and mobile.
- Save money and energy with easy to use and share energy reports.
- Stay up to speed and on your most critical devices with adjustable dashboards.
- Drill into problems quickly with powerful graphics and detailed data.
- Understand current issues and plan for future investments using trends and visualizations.



Energy



One-lines



Alarms



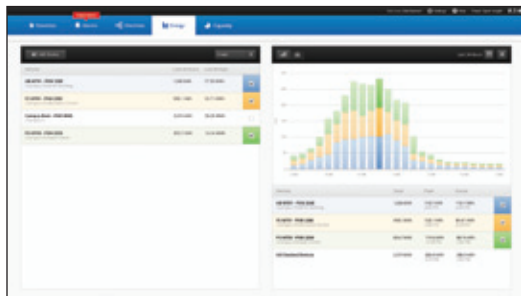
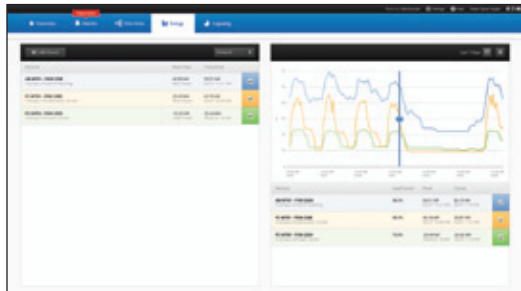
Favorites



Powering Business Worldwide

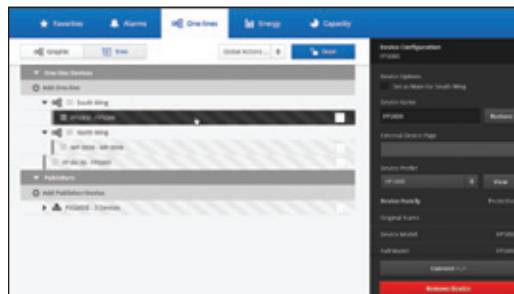
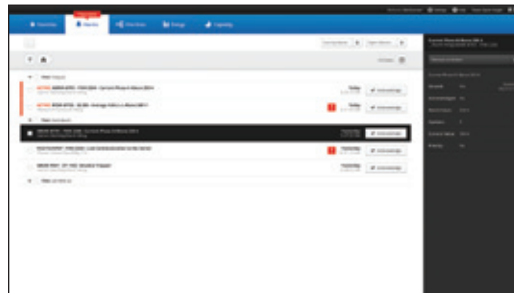
Energy

- View Energy Usage and Demand
- Select the desired devices and time range, 24 hours to a custom range
- Choose the type of graph that best suits; line or stacked bar chart
- Move the cursor over the graph to view detailed data
- Export data to a CSV-format file
- Expand to the Trend Viewer for additional information
- Energy Usage is automatically summed for the devices shown in the table



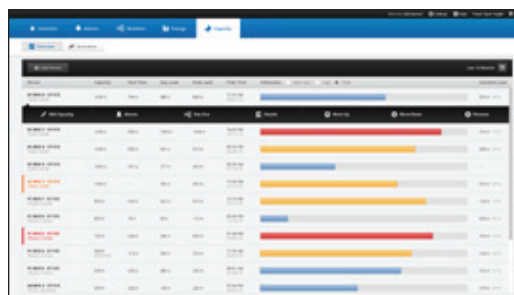
Alarms

- View color-coded alarms on one page (Black = Normal, Red = Alarm, Orange = Loss of Communication)
- Sort alarms by Time, Device or Priority for a specified time range, view by Alarm Status
- Acknowledge Alarms by individual device or group together
- Open the Alarm Pop Out to view additional data and add notes
- Export alarm history to a CSV-format file



Capacity

- Benchmark capacity usage in real-time to determine tripping points and avoid downtime.
- Custom trigger thresholds for cautionary and critical levels support all type of electrical environments and changing needs.
- Simulate and trend with line graphics load additions prior to device installation to avoid tripping and downtime.
- Forecast, budget and plan capacity requirements.
- Proactively predict overall electrical system performance by modeling capabilities.



Favorites Dashboard

- Each User can create a unique dashboard to focus on the devices or systems that they are interested in
- Devices are displayed by device type (Main, Meter, Protection) and populate the top 4 channels for that device
- Alarm color-coding is automatically propagated across pages
- A quick Trend Graph and Energy Graph are also displayed for a selected device and channel over a time range up to 24 hours
- Quickly add or remove devices from the Favorites dashboard

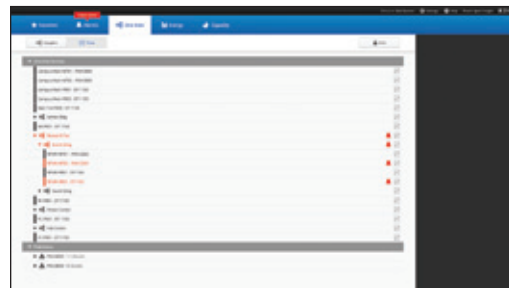


Modbus Protocol Adapter

The Protocol Adapter provides a Modbus server that regularly updates values for a specific set of Power Xpert Insight channels and makes these available as Modbus registers. You can specify the Power Xpert Insight channels you want and set the update characteristics of the Modbus server.

One-lines

- Build an electrical one-line representation of the system with device widgets and the symbols library.
- Drag-and-drop devices, lines, symbols where needed, add text boxes. Easily updated when devices are removed or added to service.
- The top 4 device channels are automatically populated on the device widgets and alarm color-coding carries through on the One-lines.
- Upload a unique background image.
- Use the Device Tree to set up the One-line structure.



Event Notification

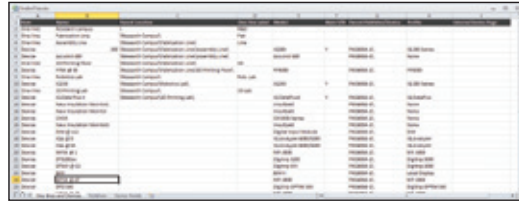
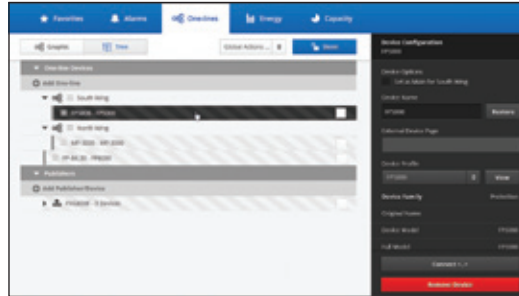
Power Xpert Notify will send out emails to selected recipients when alarms occur. The user can select the devices, recipients and frequency of notifications.

Offline Configuration

Power Xpert Insight provides the ability to completely configure a system in advance. The more you know about the final system, the more complete the offline configuration process will be.

- Configure Power Xpert Insight in advance using an Excel spreadsheet (template available at eaton.com/pxi).
- Upload the spreadsheet to an offline Power Xpert Insight system.
- Set up one-line graphics in the offline Power Xpert Insight system.
- Extract that entire system configuration.

Upload the configuration into the target system when ready and connect when the devices are online.

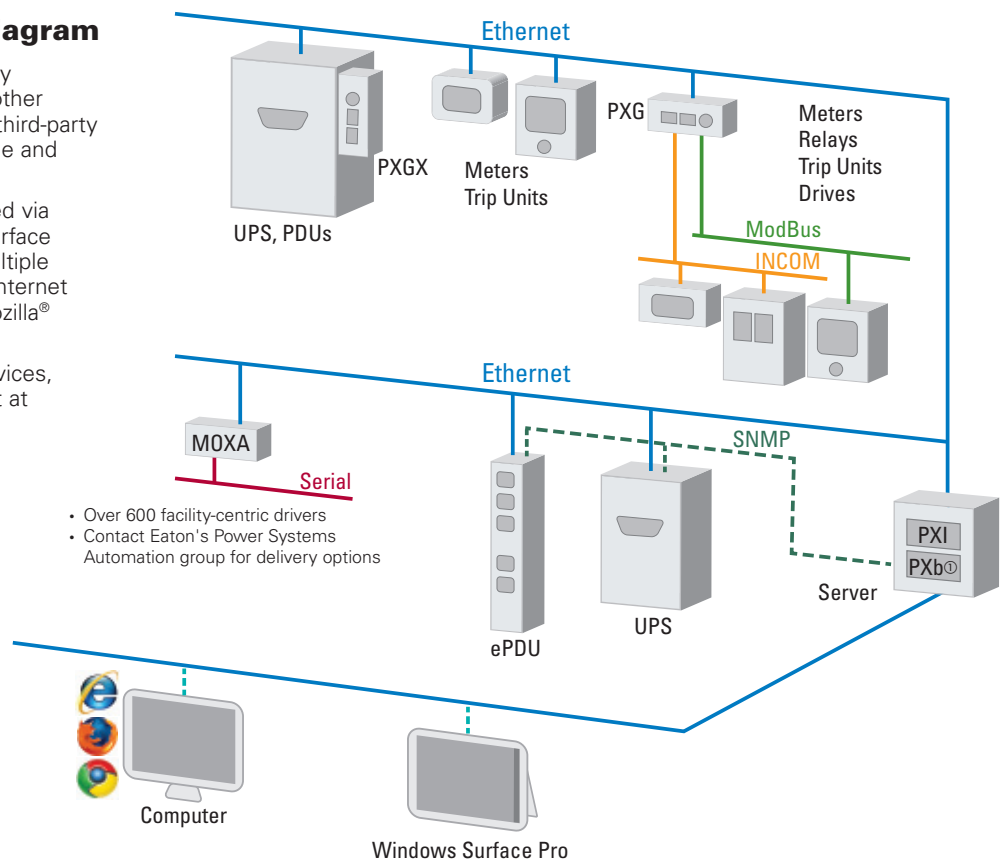


System Architecture Diagram

Power Xpert Insight (PXI) seamlessly communicates over Ethernet with other Power Xpert-enabled products and third-party products via the Power Xpert® bridge and Power Xpert Gateways.

Power Xpert Insight can be accessed via personal computer or Windows® Surface Pro tablet computer. It supports multiple web browsers including Windows Internet Explorer®, Google Chrome™ and Mozilla® Firefox®.

For a complete list of supported devices, see the Hardware Compatibility List at eaton.com/pxi.



- Over 600 facility-centric drivers
- Contact Eaton's Power Systems Automation group for delivery options

System requirements

Table 1. Hardware requirements

Power Xpert Insight requires a server-class machine with the following minimum hardware specifications:

Hardware	Specification
Processor	Quad Core
Memory	16GB
Hard disk drive	100GB – 5 years estimated data storage
Video resolution	1920 x 1080

Table 2. Software requirements

Supported Operating Systems

Server	Windows Server 2008 R2, Standard and Enterprise, SP1 Windows Server 2012 Standard and Datacenter
Client	Windows 7 Professional, Ultimate or Enterprise, x64, SP1 Windows 8 Professional/Enterprise X86 and X64
Supported versions of Microsoft SQL Server	SQL Server 2008 R2 Standard (and Standard for Small Business) SP2 SQL Server 2008 R2 Enterprise SQL Server 2012 Express with Advanced Services, Standard, Enterprise, Enterprise Core and Business Intelligence

If you do not have one of the above versions installed, Power Xpert Insight will install SQL Server 2012 Express with Advanced Services.

Supported Web Browsers

Microsoft Internet Explorer (IE) 9, 10 or 11
Google Chrome
Firefox
Other browsers (such as Opera and Safari) which support Silverlight may also work, but are not officially supported by Eaton.

Table 3. Ordering information

Catalog number	Description
Power Xpert Insight	
PXI-A	PXI for up to 10 device connections
PXI-B	PXI for up to 25 device connections
PXI-C	PXI for up to 50 device connections
PXI-D	PXI for up to 100 device connections
PXI-E	PXI for up to 200 device connections
Power Xpert Insight Upgrades	
PXI-A2B	PXI 10 to 25 upgrade
PXI-A2C	PXI 10 to 50 upgrade
PXI-A2D	PXI 10 to 100 upgrade
PXI-A2E	PXI 10 to 200 upgrade
PXI-B2C	PXI 25 to 50 upgrade
PXI-B2D	PXI 25 to 100 upgrade
PXI-B2E	PXI 25 to 200 upgrade
PXI-C2D	PXI 50 to 100 upgrade
PXI-C2E	PXI 50 to 200 upgrade
PXI-D2E	PXI 100 to 200 upgrade
Service Packs	
PX-1S	Power Xpert 1-day startup Service Pack
PX-2S	Power Xpert 2-day startup Service Pack
PX-5S	Power Xpert 5-day startup Service Pack

Eaton Corporation
Electrical Sector
1000 Eaton Boulevard
Cleveland, OH 44122 USA
Eaton.com

© 2014 Eaton Corporation
All Rights Reserved
Printed in USA
Publication No. TD152001EN / TN
October 2014

Specifications are subject to change without notice and represent the maximum capabilities of the product with all options installed. This is not a complete feature list. Features and functionality may vary depending on selected options, firmware version and product model. Please refer to the technical data sheet and User Manual for detailed specifications.

Eaton, Power Xpert and Power Xpert Insight are registered trademarks of Eaton Corporation.

All other trademarks are property of their respective owners.