

**DESCRIPTION**

The IRiS Flush Mount Collar (FMC) allows any IRiS element with the standard die-cast flange ring to be installed flush with the finished ceiling rather than the traditional overlap on top of the ceiling. The FMC ships as an accessory and installs onto standard IRiS 3" and 5" aperture new construction platforms. IRiS elements feature a removable die-cast flange ring, which can be field painted to blend in with any ceiling.

The Flush Mount Collar is designed for easy and predictable installation to provide a consistent look across a complete palette of optical distributions and sizes, and prevent cracks in the skim

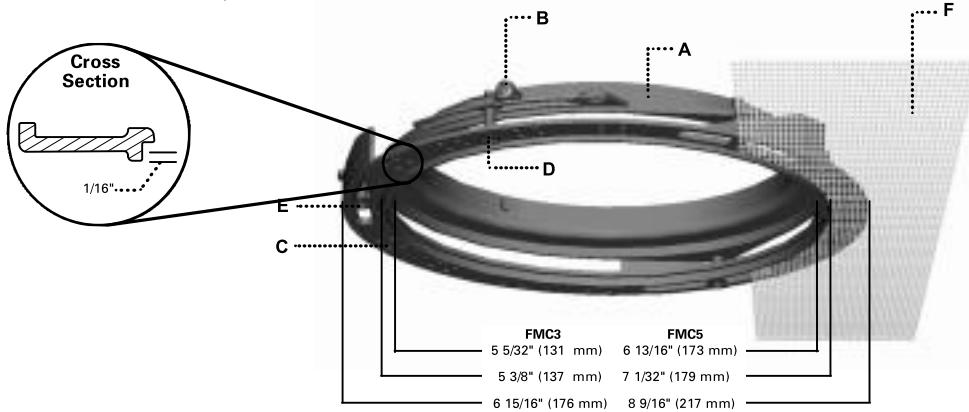
coat that are common with other "rimless" type fixtures.

FMC adjusts after ceiling is installed for any thickness between 5/8" to 1" by simply loosening the rotation lock screw and adjusting the three height adjustment screws. Made from die-cast aluminum to prevent rusting, the FMC features a 1" wide lip to accept a 1/16" skim coat over a fiberglass mesh (included with each FMC).

For plaster ceilings between 1" to 2" thick, the FMC can be used with Plaster Lip Extension collar, PLE3 or PLE5.

## Flush Mount Collar

FMC3  
FMC5



**SPECIFICATION FEATURES**

**A...Inner Collar**

Precision die-cast ring which slips over 1/2" plaster lip of platform and supports outer collar assembly.

**B...Set Screws**

Three Philips head set screws secure assembly to plaster lip of platform.

**C...Outer Collar**

Precision die-cast ring with three tall ramps which adjust collar for ceilings from 5/8" to 1" thick when collar is rotated. Inner diameter has a .130" notched lip to allow standard IRiS die-cast flange ring to seat flush with finished ceiling. Outer diameter features a notched 1" wide ridge that is .060" deep and perforated to allow fiberglass mesh and skim coat of plaster to securely attach to collar. Exposed flush edge is painted with ceiling.

**D...Lock Screw Assembly**

Stainless steel flat countersunk Philips head screw locks rotation of outer collar, at height set by height adjustment screws, by tightening cage nut and washer to outer collar. Screw seats flush in outer collar.

**E...Fiberglass Mesh**

10" x 10" Fiberglass mesh with adhesive backing is provided with each FMC to lay over ceiling and outer collar prior to skim coat application. Adds strength to skim coat to prevent cracking around edge of collar.

**Platform (shipped separately)**

FMC3 for use with P3MR, PN3MR, P3MR REMOTE, PN3MR REMOTE, P3120 and PN3120. FMC5 for use with P5 and PN5. Not for use with remodel platforms.

**Element (shipped separately)**

FMC3 & FMC5 accept all IRiS 3" and 5" elements with the standard die-cast flange. However, shower and lensed wall wash elements should not be used, as they will be hard to remove for re-lamping.

**Notes:**

- Can be used with Plaster Lip Extension collars (PLE3 or PLE5), for ceilings up to 2" thick. Please consult factory for details at 1-888 IRiS LTG.
- Not for use with self flange (SF) elements.
- Patent Pending.

**ORDERING INFORMATION**

Accessory	Size	Platform Used With
<b>FMC</b>		
FMC=Flush Mount Collar	3=3" 5=5"	FMC3 for use with P3MR, PN3MR, P3MR REMOTE, PN3MR REMOTE, P3120 and PN3120 FMC5 for use with P5 and PN5

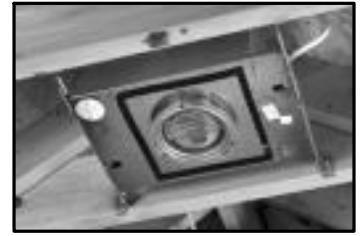
**INSTALLATION INSTRUCTIONS****Step 1**

Attach FMC3 or FMC5 collar to plaster lip of IRiS P3MR, PN3MR, P3120, PN3120, P5 or PN5 platform by tightening 3 Phillips head set screws. Do not over tighten so as to deform the plaster lip of platform.

Note that FMC can be installed to platform before or after it is mounted in ceiling. Collar will adjust after ceiling is installed to depths from 5/8" to 1" thick.

**Step 2**

Mount platform into ceiling and wire according to applicable codes.

**Step 3**

Attach bag containing mesh and instruction sheet to platform for the drywall contractor to retrieve.

**Step 4**

Install drywall and use roto zip tool to cut out hole around collar.

**Step 5**

After drywall has been installed and cut out around collar. Trim the edge of the drywall clean and adjust the FMC collar to be level with bottom of drywall via steps A - D below:

- A. Loosen the rotation lock screw first. Be careful not to remove the screw completely.
- B. Then loosen the 3 depth adjustment screws until the lower collar is level with the installed drywall. (Hint: Use a straightedge knife or level across the drywall and lower collar to this point).
- C. Once collar is located to proper height, twist collar counter-clockwise until it stops, then re-tighten the lock screw down securely. (Note that it helps to hold collar while tightening the lock screw).
- D. Confirm collar is still at proper height and the 3 depth adjustment screws are flush in collar. Adjust if necessary by repeating steps A through D.

Rotation Lock Screw



Depth Adjustment Screw (3)

**Step 6**

Attach mesh to drywall to cover entire opening.

**Step 7**

Using a razor knife, gently cut the mesh around the outside edge of the mud lip.

**Step 8**

Apply skim coat of plaster joint compound (by others) to flush ceiling up to edge of mud lip. Excess mud inside collar will need to be wiped away or it will prevent the trim from sitting within collar.

**Step 9**

Sand skim coat to blend into ceiling, prime and paint ceiling, and install desired IRiS element with standard white die-cast flange ring.

The FMC is not limited to the Pinhole, ANY 3" or 5" element with the die-cast flange can be used with the FMC (however lensed elements are not recommended as they will be hard to remove for re-lamping).

Note that flange ring can be easily removed from reflector and painted to exactly match the final ceiling color in the field.



**Note:** Specifications and Dimensions subject to change without notice.

Visit our web site at [www.cooperlighting.com](http://www.cooperlighting.com)