

## Double-level terminals

Identically contoured design of 2.5 to 10 mm<sup>2</sup> with identical end plates and partitions. An unmatched combination of many advantages!

The compact terminals are impressive for their small size and rated cross-section capacity.

In hazardous area applications, the installation instructions and the rated data specifications for accessories given in the technical appendix must be followed.

Width/Length/Height of lowest version	mm
max. current / max. cond. cross-section	A/mm <sup>2</sup>
Max. clamping range	mm <sup>2</sup>

### Technical data

Rated data	
Rated voltage	V
Rated current	A
Rated cross-section	mm <sup>2</sup>
Rated impulse withstand voltage / Pollution severity Gauge to IEC 60947-1 / Flammability class UL94	
Approvals	
Clamped conductors (H05V/H07V)	
Solid / stranded	mm <sup>2</sup>
Flexible / Flexible with ferrule	mm <sup>2</sup>
Tightening torque range (terminal screw)	
Stripping length / Blade size	mm/-
2 conductors with same cross-section (H05V/H07V)	
Solid / stranded	mm <sup>2</sup>
Flexible / Flexible with ferrule	mm <sup>2</sup>
Note	

### Ordering data

Version	
	Dark beige Wemid
	Blue Wemid
Note	

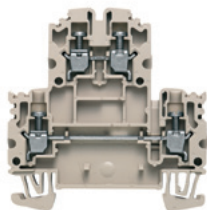
### Accessories

Pluggable cross-connection	
	2-pole
	3-pole
	4-pole
	10-pole
	20-/24-pole
Screwable cross-connection	
	2-pole
	3-pole
	4-pole
	10-pole
End plate / Partition plate	
	Dark beige Wemid
	Blue Wemid
	Dark beige Wemid
End bracket	
	Dark beige Wemid
Screwdriver	
	Standard
Cover	
	With lightning flash symbol
	Blank, white
Identification systems	
	(see assortment in catalogue 7)
	Marking tags
Note	

## WDK 2.5N

2.5 mm<sup>2</sup>

Plug-in cross-connection  
Compact design



5.1 x 60.7 x 62.45	
<b>28 / 4</b>	
<b>0.05...4</b>	

IEC 60947-7-1				Ex e II  II 2 G D			
IEC	UL	CSA	EN 60079-7	IEC	UL	CSA	EN 60079-7
800	600 (C)	300 (C)	550	800	600 (C)	300 (C)	550
24	20 (C)	20 (C)	21	24	20 (C)	20 (C)	21
2.5	AWG 26...12	AWG 26...12	2.5	2.5	AWG 26...12	AWG 26...12	2.5
				8 kV / 3			
				A3 / V-0			
				KEMA 00ATEX2061 U			
Rated connection							
0.5...4 / 1.5...4							
0.5...4 / 0.5...2.5							
0.4...0.6 Nm (M 2.5)							
8 / 0.6 x 3.5 mm							
0.5...1.5							
0.5...1.5 / 0.5...1.5							
The rated voltage is reduced to 400 V when using the cross-connection ZQV 2.5N.							

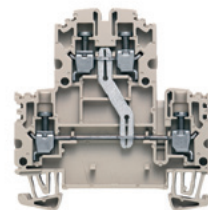
Type	Qty.	Order No.
WDK 2.5N	100	1041600000
WDK 2.5N BL	100	1041680000

Type	current	Qty.	Order No.
ZQV 2.5N/2 GE	24 A	60	1693800000
ZQV 2.5N/3 GE	24 A	60	1693810000
ZQV 2.5N/4 GE	24 A	60	1693820000
ZQV 2.5N/10 GE	24 A	20	1693880000
ZQV 2.5N/20 GE	24 A	20	1909000000
Width			
WAP WDK2.5/4 N	1.5 mm	20	1084000000
WAP WDK2.5/4 N BL	1.5 mm	20	1084080000
WTW EN	3 mm	20	1058800000
Width			
WEW 35/1	12 mm	50	1059000000
Identification systems			
DEK 5/5 / WS 8/5			
Note			

## WDK 2.5N V

2.5 mm<sup>2</sup>

Both levels at one potential  
Compact design



5.1 x 60.7 x 62.45	
<b>28 / 4</b>	
<b>0.05...4</b>	

IEC 60947-7-1				Ex e II  II 2 G D			
IEC	UL	CSA	EN 60079-7	IEC	UL	CSA	EN 60079-7
800	600 (C)	300 (C)	550	800	600 (C)	300 (C)	550
24	20 (C)	20 (C)	21	24	20 (C)	20 (C)	21
2.5	AWG 26...12	AWG 26...12	2.5	2.5	AWG 26...12	AWG 26...12	2.5
				8 kV / 3			
				A3 / V-0			
				KEMA 00ATEX2061 U			
Rated connection							
0.5...4 / 1.5...4							
0.5...4 / 0.5...2.5							
0.4...0.6 Nm (M 2.5)							
8 / 0.6 x 3.5 mm							
0.5...1.5							
0.5...1.5 / 0.5...1.5							
The rated voltage is reduced to 400 V when using the cross-connection ZQV.							

Type	Qty.	Order No.
WDK 2.5N V	100	1041610000

Type	current	Qty.	Order No.
ZQV 2.5N/2 GE	24 A	60	1693800000
ZQV 2.5N/3 GE	24 A	60	1693810000
ZQV 2.5N/4 GE	24 A	60	1693820000
ZQV 2.5N/10 GE	24 A	20	1693880000
ZQV 2.5N/20 GE	24 A	20	1909000000
Width			
WAP WDK2.5/4 N	1.5 mm	20	1084000000
WAP WDK2.5/4 N BL	1.5 mm	20	1084080000
WTW EN	3 mm	20	1058800000
Width			
WEW 35/1	12 mm	50	1059000000
Identification systems			
DEK 5/5 / WS 8/5			
Note			