

TORK[®] nsi INDUSTRIES

SPECIFICATION SHEET

Project Info:	Type:
Job Ref:	Catalog Number:
Approvals:	Date:

ZTL LONG LIFE SERIES

Advanced Electronic LED Photocontrol



ZTL124-510J-LED
Zero-Cross Electronic LED Photocontrol Mounting Turn-Lock

OVERVIEW

The ZTL Series Photocontrol is designed with enhanced ZERO-CROSS Switching Technology allowing it to withstand the high inrush currents commonly found in LED Luminaires.

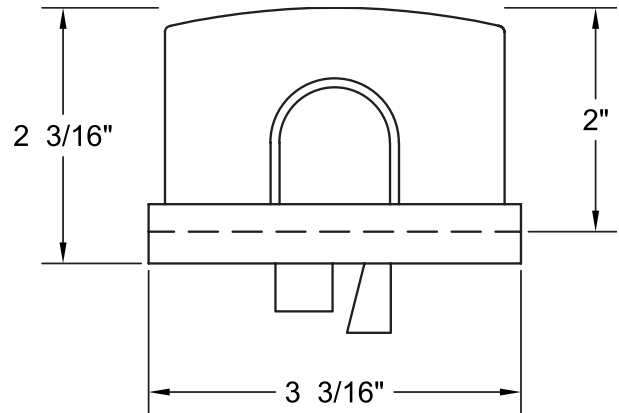
APPLICATIONS & FEATURES

- All LED, CFL, Induction, HPS and HID lighting fixtures requiring dusk to dawn control and enhanced protection against extreme inrush currents.
- Ideal for roadway, area, parking, flood and security type lighting fixtures.
- Enhanced 510 Joule MOV surge device providing superior surge protection against unpredictable line voltage spikes.
- Superior light sensing technology driven by a Non-Drifting Filtered Silicon Sensor designed for extreme accuracy and Human Eye Response.
- Circuit Board protection enhanced with conformal coating to protect against extreme weather elements and moisture.
- Photocontrol designed for 20 year long life requirement found on most LED fixtures.

SPECIFICATIONS

- **Voltage:** 105-305VAC, 50/60Hz.
- **Tungsten:** 1000 Watts.
- **Ballast:** 1800VA (U.S.) or 1000VA (Canada).
- **LED Electronic Ballast:** 8A or Totaling 2220W@277VAC.
- **Dielectric Strength:** 2500VAC.
- **Turn ON Light Level:** 1.5 fc +/- 0.2 fc Instant ON.
- **Turn OFF Light Level:** 1.5:1 (2.25 fc) with 3 second delay.
- **Operating Temperature:** -40°F to 158°F (-40°C to 70°C).
- **Fail Mode:** ON.
- **Surge Protection:** 510 Joule MOV.
- **Power Consumption:** <.5 Watts.

DIMENSIONS



REGULATORY LISTINGS

- ANSI C136.10-2010
- UL773 & CSA TIL A15



LIMITED WARRANTY

- 15-year manufacture's warranty

ORDERING INFO

ZTL124-510J-LED PHOTOCONTROL												
ZTL		124		510J				LED				
TECHNOLOGY TYPE		VOLTAGE		COVER COLOR		TURN-ON LEVEL (fc)		MOV RATING	PACKAGE QTY.		LAMP COMPATABILITY	
ZTL	ZERO-CROSS	*120	120VAC	BLANK	ANSI STD. COLOR	BLANK	1.5 ANSI STD.	510J	BLANK	4-COLOR SINGLE	LED	INCLUDES LED
	TURN-LOCK	124	105-305VAC	*BR	BROWN	*10	1.0 fc ENERGY SAVER	*1020J	*12	12 UNITS 1 COLOR		
		*BK	BLACK	*26	2.6 fc IES RECOMMENDATION	*50	50 UNITS 1 COLOR					
		*OR	ORANGE	*35	35 fc FAA							
		*GR	GREEN	*80	8.0 fc METRO - HIGH AMBIENT							

NOTE:

1. ZTL Series Photocontrols work with all standard Ballast and Tungsten type fixtures.
2. *Special order - Consult factory for availability and pricing.