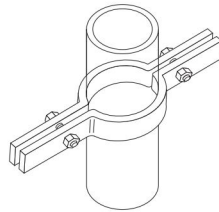
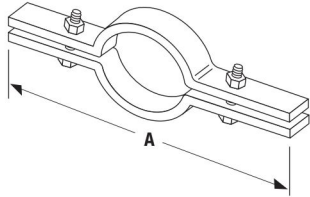


### C-720 Riser Clamps

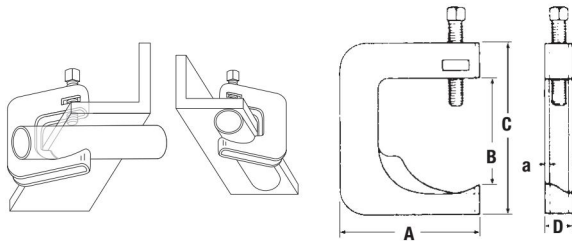
Firmly grips vertically mounted pipe or conduit and distributes the load over a larger area.



CAT. NO.	PIPE SIZE (IN.)	A (IN.)	SIZE STOCK (IN.)	SIZE BOLT (IN.)	MAX. REC. LOAD LBS.
C720 1/2	1/2	9 5/8	3/16 x 1	3/8 x 1 1/2	220
C-720-3/4	3/4	9 1/4	3/16 x 1	3/8 x 1 1/2	220
C-720-1	1	9 5/8	3/16 x 1	3/8 x 1 1/2	220
C-720-1-1/4	1 1/4	9 5/8	1/4 x 1	3/8 x 1 1/2	250
C-720-1-1/2	1 1/2	10	1/4 x 1	3/8 x 1 1/2	250
C-720-2	2	10 1/2	1/4 x 1	3/8 x 1 1/2	300
C-720-2-1/2	2 1/2	11 1/16	1/4 x 1	3/8 x 1 1/2	400
C-720-3	3	11 13/16	1/4 x 1	3/8 x 1 1/2	500
C-720-3-1/2	3 1/2	13	1/4 x 1	1/2 x 1 1/2	600
C-720-4	4	13 1/2	1/4 x 1	1/2 x 1 1/2	750
C-720-5	5	14	1/4 x 1 1/2	1/2 x 1 3/4	1,500
C-720-6	6	15 3/16	1/4 x 1 1/2	1/2 x 1 3/4	1,600
C-720-8	8	19	3/8 x 1 1/2	3/8 x 2 1/2	2,500

### C-247, C-248 & C-249 Steel Conduit Clamps

A versatile clamp for attaching conduit to any type of beam, channel, angle or column. Designed to hold the conduit snug against the support with conduit either parallel or at right angle to it. The case-hardened steel screw bites into the structural member for maximum security. 1/8" steel.

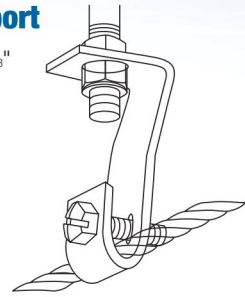
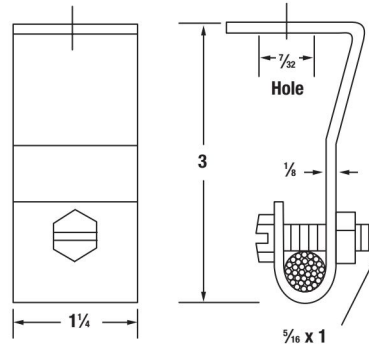


CONDUIT SIZE	MAXIMUM BEAM FLANGE THICKNESS (IN.)		
	C-247	C-248	C-249
1/2	5/8	1	—
3/4	7/16	3/4	1 1/2
1	—	1/2	1 1/4
1 1/4	—	1	—
1 1/2	—	—	5/8
Dim A	2 1/4	2 9/16	3 3/4
Dim B	1 3/8	1 3/4	2 1/2
Dim C	2 3/4	3	4
Dim D	3/16	3/16	5/8
Per Carton	100	50	50
Wt. in lbs./C	33	36	59

Galv-Krom® Finish.

### C-708 Messenger Cable Support

Designed for use as intermediate supports for 3/8" messenger cable. Grips cable when 1/16" screw is tightened. Provides easy vertical adjustment. Design load 1,000 lbs. Safety factor of 3.

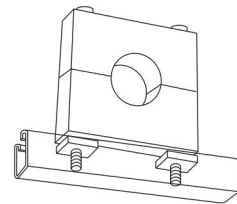
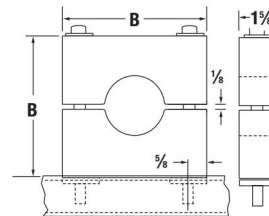


CAT. NO.	DESCRIPTION
C-708	1/8" Steel, 27#/C

Galv-Krom® finish.

### C-750 Maple Cable Clamp

Maple blocks, impregnated with paraffin. 3/8" bolts with special nuts facilitate installation on B-900 channel.



CAT. NO. & SIZE	O.D. OF CABLE (IN.)	DIMENSIONS (IN.)		WT. IN. LBS./C
		A	B	
C-750-1	0-0.99	4	3 3/8	90
C750 2	1.0-1.49	4 1/2	4 3/8	100
C-750-3	1.5-1.99	5	4 7/8	120
C-750-4	2-2.49	5 1/2	5 3/8	140
C-750-5	2.5-2.99	6	5 7/8	160
C750 6	3-3.49	7	6 3/8	200
C-750-7	3.5-3.99	8	7 3/8	240
C-750-8	4-4.49	—	—	—
C-750-9	4.5-5.00	—	—	—

Size refers to overall dimensions of Maple Cable Clamp only.

Hole will be bored to fit O.D. of cable.

Orders MUST specify exact O.D. of cable.

Special order.