

# Carlson<sup>®</sup> Structured Cable Management Systems



# Structured Cable Management Systems



Cable management systems that make installation faster and better.

member



CUSTOM ELECTRONIC DESIGN & INSTALLATION ASSOCIATION



Consumer Electronics Association MEMBER

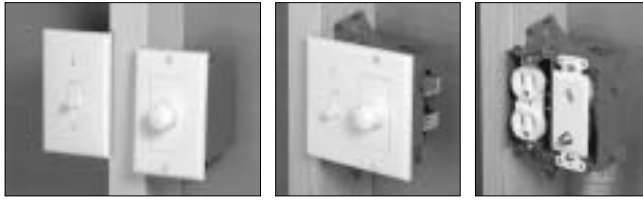
# Structured Cable Management Systems



## 1. Dual Voltage Box/Bracket

Here's a smart alternative where you would normally use separate high and low voltage boxes. Designed to fit a standard two-gang faceplate, this component combines an electrical box and low voltage bracket into a single unit for fast, easy installation.

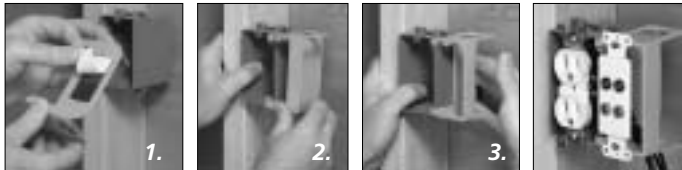
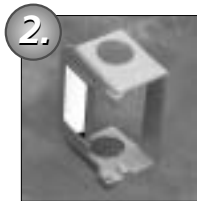
No alignment tools are required, and easy nail-on mounting provides precise placement and a professional finished appearance. Resi-Rings accept 3/4" Resi-Gard only ..... SC200DV



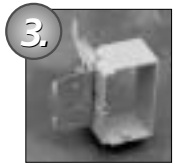
Why waste time mounting, then trying to line up separate high voltage and low voltage boxes, and still end up with something not quite right? Our Dual Voltage Box/Bracket lets you do it all in one fast, easy step with perfect alignment every time.

## Low Voltage Add-On Bracket

This low voltage bracket provides a low voltage outlet next to a previously installed high voltage outlet. Great for both new construction and rework, it attaches easily to most electrical boxes, and is designed to fit a standard two-gang faceplate. Resi-Rings accept 3/4" Resi-Gard only ..... SC100SC



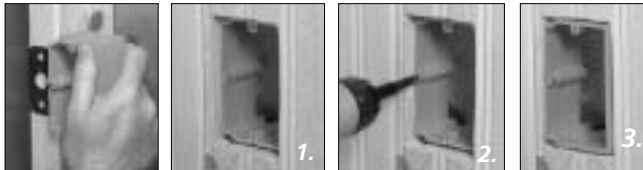
Attaching the Add-On Bracket is a "snap." You just remove the back of the double-sided tape (1), clip the bracket in place (2), and press on the bracket to secure it against the box (3). Allows for the installation of most decora style yoke plates



## 3. Low Voltage Adjustable Brackets

Our Low Voltage Adjustable Brackets are the perfect solution for tile, paneling, or stucco. A bracket allows for quick, easy stud mounting, and a turn of the screw adjusts to any wall thickness. It's great for retrofit/ installation

upgrades. Replace the single-gang bracket with a two-gang bracket, or switch services to a high-voltage Adjust-A-Box™ ... SC100ADJC (shown) SC200ADJC



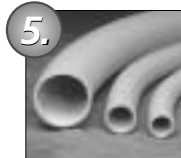
Our Low Voltage Adjustable Brackets simplify installation with tile, paneling, or stucco to save you time and effort. Just use the quick-mount bracket to clip it to the stud (1), add a screw for extra support if you want it (2), then use the adjustment screw to accommodate wall thickness (3). Also available in a two-gang version.

## Low Voltage Brackets

Here's the fast installation choice where only low voltage is required. Designed to fit a standard one- or two-gang faceplate, these low voltage brackets feature an easy nail-on mounting or screw-in bracket, while a hard shell provides increased durability and no racking. SC100A – Accepts 3/4", 1", and 1-1/4" Resi-Gard SC200A (shown) – Accepts 3/4" Resi-Gard only



Our Low Voltage Brackets are open-backed to easily accommodate the bend radiuses required for low voltage cabling and deep devices such as volume controls, while molded-in ports make it easy to connect flexible raceway for future-proofing. Or you can use them to tie off cable to the bracket. They can also be attached to wood or steel studs.



## 5. Resi-Gard® Flexible Raceway And Fittings

Available in 5 sizes from 3/4" to 2", with factory installed pull tape in sizes 1" to 2", our Resi-Gard Flexible Raceway provides a main chase from the main distribution panel

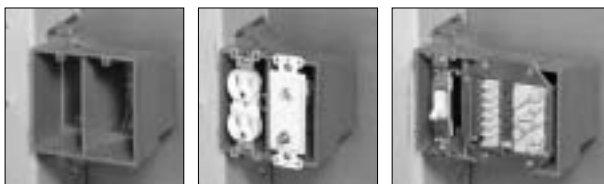
to a secondary hub in the attic or basement. Ideal for easy access to add cable or service upgrades, or leave empty for future expansion ..... See page 100 for part numbers



Our complete line of quick-connect couplings, adapters, cable clips, conduit clamps, and solvent cement make for quick, easy professional installation of Resi-Gard Flexible Raceway.

## Low Voltage Divider Plate

For applications where a combined high and low voltage closed back box is needed, such as placement in a fire-rated wall, we offer our Carlon SuperBlue™ two-, three-, and four-gang wiring boxes with a slip-in-place divider to give you the split box you need for the low voltage outlet ..... SCDIV



What could be easier than converting one of our Carlon SuperBlue boxes for both high and low voltage use? Just slip the divider into place, and you're ready to go. Great for situations requiring a dual voltage fire-rated box.

## Resi-Gard® Flexible Raceway

Ideal for providing a main chase from the main distribution panel to a secondary hub in the attic or basement, Resi-Gard nonmetallic flexible raceway is available in 3/4" to 2" diameter sizes with factory installed pull tape in sizes 1" to 2". The raceway is hand bendable, lightweight and easily cut to length to reduce scrap. Bright orange color clearly signifies a low voltage installation.



### Standard Length Coils

Size	Pull Tape	Part No.	Coil Length	Prod. Wt. (lbs.) Coil
3/4"	Empty*	SCE4X1-100	100	11.5
1"	900 lbs.	SCF4X1C-100	100	17.9
1 1/4"	900 lbs.	SCG4X1C-100	100	21.5
1 1/2"	900 lbs.	SCH4X1C-50	50	11.2
2"	900 lbs.	SCJ4X1C-50	50	13.4

\*If installing own tape, a lubricated polyester is recommended.

### Standard Length Reels\*

Size	Pull Tape	Part No.	Reel Length	Prod. Wt. (lbs.) Reel
3/4"	Empty	SCE4X1-1000	1000	115.0
1"	900 lbs.	SCF4X1C-1500	1500	268.5
2"	900 lbs.	SCJ4X1C-500	500	133.5

\* Made to order

## Resi-Gard® Fittings

A complete line of Carlon one-piece quick connect couplings, threaded adapters, and snap-in terminator adapters are available for quick, easy professional installation of Resi-Gard Flexible Raceway.



### Quick Connect Coupling

Part No.	Size	Std. Ctn. Qty.	Std. Ctn. Wt. (lbs.)
SCA240E	3/4"	25	.783
SCA240F	1"	20	.972



### Male Terminal Adapter\*

Part No.	Size	Std. Ctn. Qty.	Std. Ctn. Wt. (lbs.)
SCE943G	1 1/4"	50	3
SCE943H	1 1/2"	25	2.5
SCE943J	2"	50	6.8



### Quick Connect Threaded Adapter

Part No.	Size	Std. Ctn. Qty.	Std. Ctn. Wt. (lbs.)
SCA243E	3/4"	25	.633
SCA243F	1"	20	.778



### Standard Couplings\*

Part No.	Size	Std. Ctn. Qty.	Std. Ctn. Wt. (lbs.)
SCE940G	1 1/4"	30	3.5
SCE940H	1 1/2"	25	3.9
SCE940J	2"	30	5.2

\* Must be cemented to Resi-Gard® Flexible Raceway using ONLY Resi-Gard Solvent Cement



### Quick Connect Snap-In Adapter

Part No.	Size	Std. Ctn. Qty.	Std. Ctn. Wt. (lbs.)
SCA253E	3/4"	25	.783
SCA253F	1"	20	.918



### PVC Lock Nut

Part No.	Size	Std. Ctn. Qty.	Std. Ctn. Wt. (lbs.)
▶ LT9LE	3/4"	700	4
▶ LT9LF	1"	600	4

## Structured Cabling Boxes and Brackets

Carlson's new and innovative family of Structured Cabling Boxes and Brackets for all your installation requirements.

### Dual Voltage Box/Bracket\*



SC200DV

#### Features:

- Dual Voltage Capability
- Accepts a two-gang face plate.
- 3/4" Resi-Rings
- Backless Design accommodates large/deep low voltage devices.
- Eliminates cutting the backs off Electrical Boxes.
- Accommodates bend radius requirements for low voltage cabling.
- Provides ample space for installation.

Part No.	Size	Volume	Std. Ctn. Qty.	Std. Ctn. Wt. (lbs.)
SC200DV	1-Gang	20.5 cu. in.	16	6.4

\*U.S. Patent D463,376



### Low Voltage Add-On Bracket\*



SC100SC

#### Features:

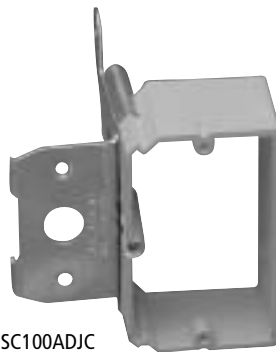
- Dual Voltage Capability accommodates high and low voltage devices in the same box.
- Accepts a two-gang face plate.
- Attaches to virtually any nonmetallic electrical box as long as there's a side for the tape to stick to.
- 3/4" Resi-Rings
- Allows for the installation of most decora style yoke plates

Part No.	Size	Std. Ctn. Qty.	Std. Ctn. Wt. (lbs.)
SC100SC	1-Gang	24	2.3

\*U.S. Patent D459,312  
U.S. Patent 6,710,245



### Low Voltage Adjustable Brackets\*



SC100ADJC

#### Features:

- Accommodates varying finished wall thicknesses – ideal for wood paneling, tile or stucco walls.
- With the turn of a screw, adjust to any wall thickness.
- Steel Mounting Bracket provides a secure mount.
- Backless Design accommodates large/deep low voltage devices.
- Eliminates cutting the backs off Electrical Boxes.
- Accommodates bend radius requirements for low voltage cabling.
- Provides ample space for installation.
- Removable Bracket and Interchangeable Mounting Bracket – upgrade from a one-gang to a two-gang anytime.

Part No.	Size	Std. Ctn. Qty.	Std. Ctn. Wt. (lbs.)
SC100ADJC	1-Gang	24	7.5
SC200ADJC	2-Gang	20	6.9

\*U.S. Patent 5,289,934



## Low Voltage Brackets\*



SC100A



SC200A

### Features:

- Backless Design accommodates large/deep low voltage devices.
- Eliminates cutting the backs off Electrical Boxes.
- Accommodates bend radius requirements for low voltage cabling.
- Provides ample space for installation.
- Breakaway Drywall Support Flange provides easy alignment for 1/2" drywall.
- Mount Flange for steel stud application
- Screw mount option

### One-Gang Low Voltage Bracket:

- Resi-Rings with Concentric Knockouts
- Accepts 3/4", 1", and 1-1/4" Resi-Gard.
- Horizontal Mounting Bracket
- Bracket can be mounted horizontally on wood or steel studs.
- Breakaway Vertical Mounting Flange
- Breakaway feature allows the use of the Low Voltage Add-On Bracket.

Part No.	Size	Std. Ctn. Qty.	Std. Ctn. Wt. (lbs.)
SC100A	1-Gang	24	5.3
SC200A (3/4" Resi-Rings)	2-Gang	24	7.7

\*U.S. Patent D457,140  
D462,664

U.S. Patent No. 6,812,405

\*©Lamson & Sessions



## Old Work Brackets



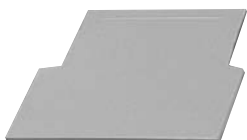
### Features:

- Rectangular Flange for faster/easier installation.
- Chamfered Corners – Prevents Racking.
- Shallow Bracket – Less material, easier to work with.
- Marking hole for wall opening.
- Thinner Flange for less protrusion on the wall.
- SINGLE GANG ONLY – Clamps stop at center point to prevent the bracket from twisting or bending out of the wall.

Part No.	Size	Std. Ctn. Qty.	Std. Ctn. Wt. (lbs.)
SC100RR	1-Gang	12	1.4
SC200RR	2-Gang	6	.9



## Low Voltage Divider Plate



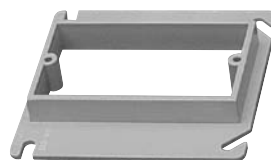
SCDIV

Part No.	Std. Ctn. Qty.	Std. Ctn. Wt. (lbs.)
SCDIV	50	2.2

For use with Carlon® SuperBlue™ boxes only (Refer to pages 79-81)



## Mud Ring (4" sq. 1/2" Raised Cover)



Part No.	Size	Std. Ctn. Qty.	Std. Ctn. Wt. (lbs.)
SCA410	1-Gang	20	1.54

## Cable Clips

Carlton's cable clips with pre-installed nails provide fast and easy installation for either a single cable, 2-3 cables, or 1 bundled cable.

Size	Part No.	Standard Bag Quantity	Std. Ctn. Wt. (lbs.)	Std. Ctn. Qty.
1/4"	SC14CC	1 ea. (Equals one bag of 100 Clips)	2.23	10 Bags of 100
1/2"	SC12CC	1 ea. (Equals one bag of 25 Clips)	2.31	10 Bags of 25
3/4"	SC34CC	1 ea. (Equals one bag of 10 Clips)	2.96	20 Bags of 10



## Conduit Clamps

Carlton's orange conduit clamps are designed to secure Resi-Gard raceway or bundled cable.

Size	Part No.	Standard Bag Quantity	Std. Ctn. Qty.	Std. Ctn. Wt. (lbs.)
3/4"	SCE977EC	1 ea. (Equals one bag of 5 Clamps)	20 Bags of 5	1.5
1"	SCE977FC	1 ea. (Equals one bag of 5 Clamps)	12 Bags of 5	1.3
1 1/4"	SCE977GC	1 ea. (Equals one bag of 5 Clamps)	8 Bags of 5	1.1
1 1/2"	SCE977HC	1 ea. (Equals one bag of 5 Clamps)	6 Bags of 5	1.0
2"	SCE977JC	1 ea. (Equals one bag of 5 Clamps)	6 Bags of 5	1.5



NOTE: Each clamp requires 2 screws, 2 nuts, and/or 2 bolts

## Resi-Gard® Solvent Cement

Resi-Gard Solvent Cement is ideal for easy, tight installation of all Resi-Gard flexible nonmetallic raceway and fittings and accessories. Available in pint sizes with convenient brush top applicator.

Part No.	Std. Ctn. Qty.	Std. Ctn. Wt. (lbs.)
VC9963SC	24	28.6



## Resi-Gard® Cutters

Carlton's Kwikcut Cutter is ideal for fast, smooth field cuts for up to 1" diameter Resi-Gard nonmetallic flexible raceway. Carlton's Large PVC Cutter is ideal for cuts up to 2" diameter nonmetallic rigid and flexible raceway.

### Small Cutter

For fast, smooth field cuts of 1/2" through 1" innerduct.



Part No.	Size	Std. Ctn. Qty.
CC120B	8"	10

### Large Cutter

For clean cuts of conduit 1/2" through 2".



Part No.	Size	Std. Ctn. Qty.
CC122	17 1/2"	1

## Low Voltage Adjustable Floor Bracket w/ Cover



The Carlon Low Voltage Adjustable Floor Bracket is specifically designed for the low voltage, structured cabling market. . . *the floor bracket is industry standard orange to identify low voltage applications, the open design provides the space needed for low voltage bend radius requirements, and the Leviton QuickPort® Quad 106® Insert provides up to four low voltage outlet ports.* The Carlon Low Voltage Adjustable Floor Bracket is ideal for any residential or commercial low voltage application.

The floor bracket also features a patented screw design allowing it to be adjusted to most finished floor heights by simply turning the screw clockwise or counterclockwise and adjusting flush to the floor.

The floor bracket kit comes complete with a nonmetallic (white or ivory) or brass cover, a Leviton QuickPort Quad 106 Insert, new work and old work metal mounting brackets, and mounting screws.

***Carlon Structured Cable Management Systems...Your Total Systems Solution!***

### Features:

- White, Ivory, or Brass Cover
- Orange – Identifies Low Voltage Installations
- Open Design Floor Bracket – Accommodates Low Voltage Bend Radius Requirements
- Patented Adjustable Screw – Bracket Adjusts to Most Finished Floor Depths
- Leviton QuickPort Quad 106 Insert – Install up to 4 Low Voltage Inserts
- Two-Door Design
- C-UL-US Listed

### Installation:



*Install clip over subfloor.*



*Screw in to adjust to height of flooring or carpet.*



*Beautiful flush fit every time!*

### Specifications:

Part No.	Cover	Std. Ctn. Qty.	Std. Ctn. Wt. (lbs.)
SC100FBWC	Nonmetallic – White	8	5.62
SC100FBVC	Nonmetallic – Ivory	8	5.62
SC100FBBC	Brass	8	13.78