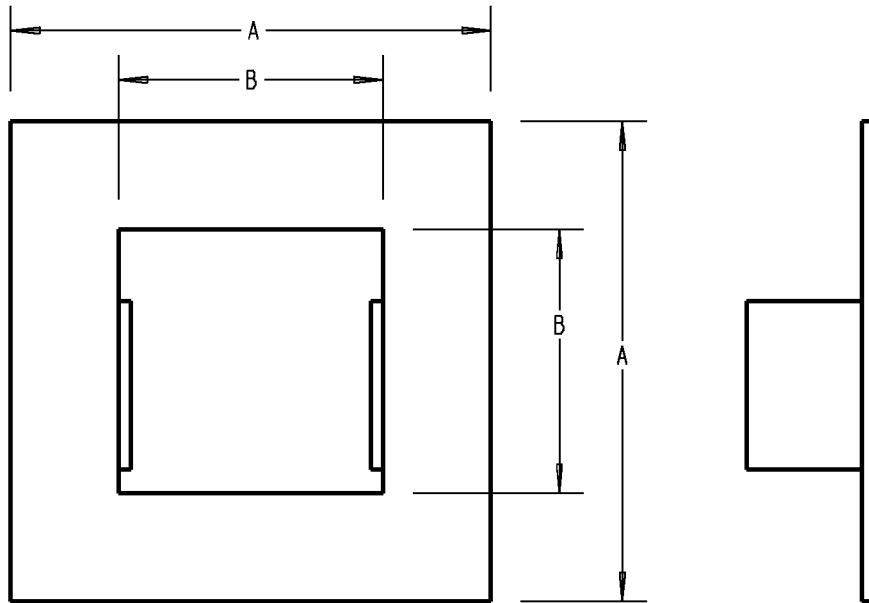


Carlton®



CEP P/N	EGALINE PVC LAY-IN WIREWAY FITTINGS		
	PRODUCT DESCRIPTION	A (IN) (MM)	B (IN) (MM)
EGFJ	2 X 2" FLANGE	4 (101.6)	1.75 (44.45)
EGFL	3 X 3" FLANGE	5 (127.0)	2.75 (69.85)
EGFN	4 X 4" FLANGE	6 (152.4)	3.75 (95.25)
EGFR	6 X 6" FLANGE	8 (203.2)	5.75 (146.05)

NOTES:

1. MATERIAL : UL 94V-0 PVC
2. COLOR : GRAY

GENERAL NOTES		Thomas & Betts <small>www.tnb.com</small>			
1. ALL DIMENSIONS ARE FOR REFERENCE ONLY. 2. DIMENSIONS IN BRACKETS [] ARE IN METRIC UNITS.					DESCRIPTION: FLANGE - WIREWAY
REVISIONS					
*** SEE ERN (****) FOR APPROVAL SIGNATURES & RELEASE DATE. PROJECT NO: ****		ORIGINAL PROJECT NO / (ERN NO) / ()	SHEET NO: 1 OF 1	REV. NO: B	DRAWING NO: WSD-AC01947