

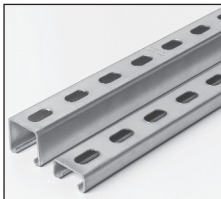
Standard Channels

Material

Channels are cold formed from hot rolled pickled and oiled strip steel.

Material Thickness

All series 1200 12 gauge material
 All series 1400 14 gauge material



Standard Lengths

Standard lengths for channel are 10 ft. and 20 ft.

Standard length tolerance $\pm 1/8"$.

Shorter lengths are available at a small cutting charge.

GoldGalv® hardware finish is standard for all Superstrut products. This is a multi-process finish of electro-plated zinc, followed by gold colored zinc dichromate to give excellent corrosion resistance and superior paint base. See pages B2-B3 for a complete description of the GoldGalv® hardware finish. GoldGalv® hardware will be furnished if no other finish is specified.



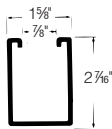
A SERIES



B SERIES



C SERIES

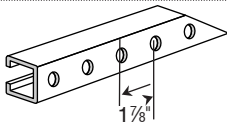
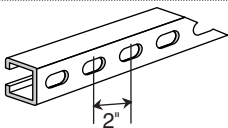


E SERIES



H SERIES

Hole Configurations



Half Slot Channel

Cat. No.	Dim.	Ga.	Std. Ctn.
A-1200-HS	1 5/8 x 1 5/8	12	*
B-1200-HS	1 5/8 x 1 3/16	12	*
C-1200-HS	1 5/8 x 1 1/8	12	500
E-1200-HS	1 5/8 x 2 7/16	12	500
H-1200-HS	1 5/8 x 3 1/4	12	*
A-1400-HS	1 5/8 x 1 5/8	14	*
B-1400-HS	1 5/8 x 1 3/16	14	500

Punched Channel

Cat. No.	Dim.	Ga.	Std. Ctn.
A-1200-P	1 5/8 x 1 5/8	12	500
B-1200-P	1 5/8 x 1 3/16	12	500
H-1200-P	1 5/8 x 1 3/16	12	500
A-1400-P	1 5/8 x 1 1/2	14	500
B-1400-P	1 5/8 x 1 3/16	14	500

1" holes on 1 7/8" centers.
 Avail. in 10 & 20 ft. lengths.

9/16" x 1 1/8" slots on 2" centers.
 * Standard lengths 10 ft. and 20 ft. for standard cartons. Please consult your local T&B representative.