

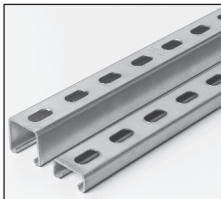
### Standard Channels

#### Material

Channels are cold formed from hot rolled pickled and oiled strip steel.

#### Material Thickness

All series 1200 12 gauge material  
 All series 1400 14 gauge material



#### Standard Lengths

Standard lengths for channel are 10 ft. and 20 ft.

Standard length tolerance  $\pm 1/8"$ .

Shorter lengths are available at a small cutting charge.

GoldGalv® hardware finish is standard for all Superstrut products. This is a multi-process finish of electro-plated zinc, followed by gold colored zinc dichromate to give excellent corrosion resistance and superior paint base. See pages B2-B3 for a complete description of the GoldGalv® hardware finish. GoldGalv® hardware will be furnished if no other finish is specified.



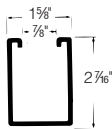
A SERIES



B SERIES



C SERIES

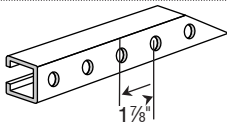
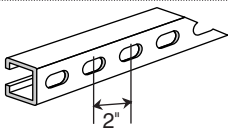


E SERIES



H SERIES

### Hole Configurations



#### Half Slot Channel

| Cat. No.  | Dim.           | Ga. | Std. Ctn. |
|-----------|----------------|-----|-----------|
| A-1200-HS | 1 5/8 x 1 5/8  | 12  | *         |
| B-1200-HS | 1 5/8 x 1 3/16 | 12  | *         |
| C-1200-HS | 1 5/8 x 1 3/8  | 12  | 500       |
| E-1200-HS | 1 5/8 x 2 7/16 | 12  | 500       |
| H-1200-HS | 1 5/8 x 3 1/4  | 12  | *         |
| A-1400-HS | 1 5/8 x 1 5/8  | 14  | *         |
| B-1400-HS | 1 5/8 x 1 3/16 | 14  | 500       |

#### Punched Channel

| Cat. No. | Dim.           | Ga. | Std. Ctn. |
|----------|----------------|-----|-----------|
| A-1200-P | 1 5/8 x 1 5/8  | 12  | 500       |
| B-1200-P | 1 5/8 x 1 3/16 | 12  | 500       |
| H-1200-P | 1 5/8 x 1 3/16 | 12  | 500       |
| A-1400-P | 1 5/8 x 1 1/2  | 14  | 500       |
| B-1400-P | 1 5/8 x 1 3/16 | 14  | 500       |

1" holes on 1 5/8" centers.  
 Avail. in 10 & 20 ft. lengths.

9/16" x 1 5/8" slots on 2" centers.  
 \* Standard lengths 10 ft. and 20 ft. for standard cartons. Please consult your local T&B representative.