

# METAL FLAT COVERS

## MX SERIES FEATURES

- Heavy Duty Die-Cast Metal Construction
- Patented Quick-Fit™ Keyhole Mounting System
- Premium Powdercoat Finish
- Patented Universal-Fit™ Adapter Technology
- Allows Installation In Under a Minute
- UL Listed for Horizontal & Vertical Instalations
- Lockable Tab
- Spring Hinge Closure



**MX1050S**



**MX1050Z**



**MX1050W**



**MX1250S**

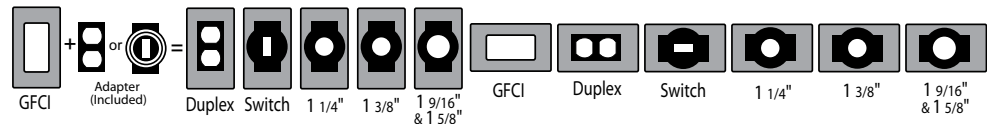


**MX1250Z**



**MX1250W**


**12<sup>in</sup>1**  
CONFIGURATIONS



TAYMAC ITEM NUMBER	UPC NUMBER	TYPE	COLOR	SHELF PACK	SHELF PACK WEIGHT lbs.
<b>1-Gang Device Covers</b>					
<b>Flat Covers</b>					
MX1050S	0-92326-11065-5	Vertical	Gray	20	6.07
MX1050Z	0-92326-11066-2	Vertical	Bronze	20	6.07
MX1050W	0-92326-11067-9	Vertical	White	20	6.07
MX1250S	0-92326-11068-6	Horizontal	Gray	20	6.35
MX1250Z	0-92326-11069-3	Horizontal	Bronze	20	6.35
MX1250W	0-92326-11070-9	Horizontal	White	20	6.35

# METAL FLAT COVERS

## MX SERIES FEATURES

- Heavy Duty Die-Cast Metal Construction
- Patented Universal-Fit™ Adapter Technology
- Patented Quick-Fit™ Keyhole Mounting System Allows Installation In Under a Minute
- Lockable Tab
- Premium Powdercoat Finish
- Spring Hinge Closure
-  LISTED & 2008 NEC® Compliant



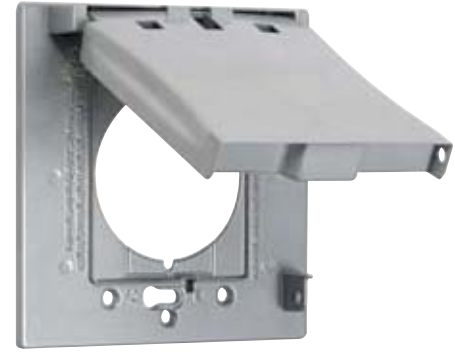
**MX2050S**



**MX2050Z**

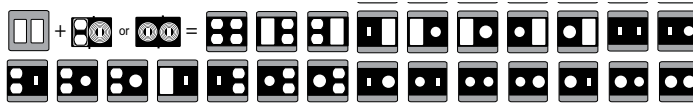


**MX2050WH**

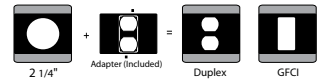


**MX2150S**


**25<sup>in</sup>1**  
CONFIGURATIONS



**3<sup>in</sup>1**  
CONFIGURATIONS



## METAL COVERS FEATURES

- Superior Commercial Quality Die Cast Metal Construction
- Premium Powdercoat Finish
- Includes Gasket, Mounting Hardware and Installation instructions
- Lockable Tab (CH100)
-  LISTED & 2008 NEC® Compliant



**BC100S**



**BC100Z**



**BC100WH**



**CH100S**



**CH100Z**



**CH100WH**

TAYMAC ITEM NUMBER	UPC NUMBER	TYPE	COLOR	SHELF PACK	SHELF PACK WEIGHT lbs.
<b>2-Gang Device Covers</b>					
<b>Flat Covers</b>					
MX2050S	0-92326-11071-6	2-Device 25-in-1	Gray	8	3.95
MX2050Z	0-92326-11280-2	2-Device 25-in-1	Bronze	4	1.9
MX2050WH	0-92326-11281-9	2-Device 25-in-1	White	4	1.9
MX2150S	0-92326-11072-3	1-Device 3-in-1	Gray	4	3.25
MX3050S	0-92326-11261-1	3-Device 125-in-1	Gray	5	5.68
<b>1-Gang Covers</b>					
<b>Blank Cover</b>					
BC100S	0-92326-11001-3	Blank	Gray	20	3.35
BC100Z	0-92326-11002-0	Blank	Bronze	20	3.35
BC100WH	0-92326-11211-6	Blank	White	20	3.35
<b>Duplex Receptacle Cover</b>					
CH100S	0-92326-11119-5	Horizontal, Lockable	Gray	20	4.70
CH100Z	0-92326-11276-5	Horizontal, Lockable	Bronze	20	4.70
CH100WH	0-92326-11277-2	Horizontal, Lockable	White	20	4.70

# METAL FLAT COVERS



**TC100S**



**TC111S**



**BC300S**



**BC200S**



**BC200Z**



**BC200WH**



**TC200S**



**TC221S**



TAYMAC ITEM NUMBER	UPC NUMBER	TYPE	COLOR	SHELF PACK	SHELF PACK WEIGHT lbs.
1-Gang Toggle Cover					
TC100S	0-92326-11207-9	Toggle	Gray	10	4
1-Gang Toggle Cover Kit with Switch					
TC111S	0-92326-11102-7	Toggle	Gray	6	2.19
Round Blank Cover					
BC300S	0-92326-11005-1	Blank	Gray	20	5.53
2-Gang Blank Cover					
BC200S	0-92326-11004-4	Blank	Gray	20	5.77
BC200Z	0-92326-11278-9	Blank	Bronze	20	5.56
BC200WH	0-92326-11279-6	Blank	White	20	5.56
3-Gang Blank Cover					
BC400S	0-92326-11260-4	Blank	Gray	5	3.69
2-Gang Toggle Cover					
TC200S	0-92326-11208-6	Toggle	Gray	5	3
2-Gang Toggle Cover Kit with Switches					
TC221S	0-92326-11103-4	Toggle	Gray	4	2.95