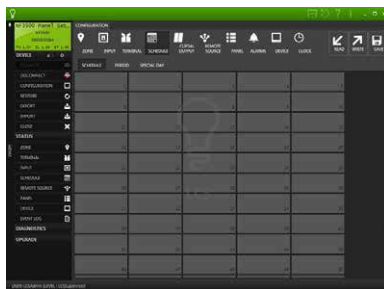


Control Bus

Power Supply



NF3500G4 Controller



Powerlink Software

Powerlink™ Accessories

Table 9.83: Control Bus

Max. No. of Control Circuits	Required Interior Size	Panel Orientation	Catalog No.
12	30	Left	NF12SBLG3
12	30	Right	NF12SBRG3
18	42	Left	NF18SBLG3
18	42	Right	NF18SBRG3
21	54	Left	NF21SBLG3
21	54	Right	NF21SBRG3

Table 9.84: Power Supply

Voltage	Primary Source	Catalog No.
120 V	Panel Bus	NF120PSG3
240 V	Panel Bus	NF240PSG3
277 V	Panel Bus	NF277PSG3
120 V	External	NF120PSG3L
240 V	External	NF240PSG3L
277 V	External	NF277PSG3L

Table 9.85: Controller

Description	Catalog No.
500	NF500G3
1000	NF1000G3
2000	NF2000G3
3000	NF3000G3
3500	NF3500G4

Table 9.86: Remote Source Controller (for additional inputs)—

Voltage	Catalog No.
120 V	RSC16G3120
240 V	RSC16G3240
277 V	RSC16G3277

Table 9.87: Cables & Accessories

Description	Catalog No.
Control bus cables	
Harness standard panel	NF2HG3
Sub-net accessories & cables	
Sub-panel address selector ^[4]	NFSELG3
6' sub-net cable	NFSN06
10' sub-net cable	NFSN10
25' sub-net cable	NFSN25
50' sub-net cable	NFSN50
Serial cables	
Controller front panel cable	NFFPCG3

Table 9.88: Miscellaneous Hardware

Description	Catalog No.
Circuit Breaker Handle Padlock (Lock On or Off)	HPAFD
Fixed Barrier	NFASBKG3
Remote Mounting Adapter	NFADAPTERG3

Table 9.89: Software

Description	Catalog No.
LCSV2 Software ^[5]	LCSV2

[4] One address selector required for each sub-panel.

[5] Required for G4 controllers (NF3500G4). Will also support G3 controllers.