

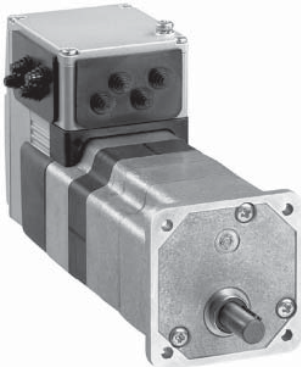
Motion control

Lexium integrated drives

IL●2 for DeviceNet, EtherCAT, EtherNet/IP, Modbus TCP, Ethernet POWERLINK
ILE2 with DC brushless motor



ILE2 integrated drive with brushless servo motor



ILE2 integrated drive with brushless servo motor and straight-tooth gearbox

References		I	L	E	2	D	6	6	1	P	B	1	A	1
Example:		I	L	E	2	D	6	6	1	P	B	1	A	1
Motor type E = DC brushless motor		I	L	E	2	D	6	6	1	P	B	1	A	1
Supply voltage 2 = 24...48 V		I	L	E	2	D	6	6	1	P	B	1	A	1
Communication interface D = DeviceNet E = EtherCAT K = EtherNet/IP P = Ethernet POWERLINK T = Modbus TCP		I	L	E	2	D	6	6	1	P	B	1	A	1
Flange size 66 = 66 mm		I	L	E	2	D	6	6	1	P	B	1	A	1
Drive type (1) 1 = ILE2●661 2 = ILE2●662		I	L	E	2	D	6	6	1	P	B	1	A	1
Winding type (1) P = medium rotation speed		I	L	E	2	D	6	6	1	P	B	1	A	1
Connection B = printed circuit board connector C = industrial connector		I	L	E	2	D	6	6	1	P	B	1	A	1
Encoder type 1 = encoder for DC brushless motor (12 points/turn)		I	L	E	2	D	6	6	1	P	B	1	A	1
Holding brake A = without holding brake		I	L	E	2	D	6	6	1	P	B	1	A	1
Gearbox 0 = without gearbox		I	L	E	2	D	6	6	1	P	B	1	A	1
Straight-tooth gearbox (2) 1 = reduction ratio 18:1 (160:9) 2 = reduction ratio 38:1 (75:2) 3 = reduction ratio 54:1 (490:9) 4 = reduction ratio 115:1 (3675:32)		I	L	E	2	D	6	6	1	P	B	1	A	1
Tapered worm gearbox (2) 5 = reduction ratio 24:1 (525:22) 6 = reduction ratio 54:1 (1715:32) 7 = reduction ratio 92:1 (735:5) 8 = reduction ratio 115:1 (3675:32)		I	L	E	2	D	6	6	1	P	B	1	A	1

(1) See the main characteristics and dimensions according to the type of drive in the table below:

Drive		ILE2●661		ILE2●662	
Nominal supply voltage	V $\overline{\text{---}}$	24	48	24	48
Nominal current	A	6.8	3.8	9.5	9.5
Nominal speed of rotation	rpm	4800	6000	3100	5000
Nominal torque	Nm	0.26		0.5	
Maximum torque	Nm	0.43		0.8	
Detent torque (at zero current)	Nm	0.08		0.106	
Dimensions (overall in mm)	Without gearbox	W x H x D	66 x 104 x 122		66 x 104 x 140
	With straight-tooth gearbox	W x H x D	66 x 104 x 174		
	With worm gearbox	W x H x D	66 x 104 x 229		

(2) Gearbox only available for ILE2●661 integrated drive.

Note: See all the data (characteristics, dimensions) on our website www.schneider-electric.com.