

## SELECTION CHARTS

SINGLE PHASE

## GROUP I



## 240 X 480 PRIMARY VOLTS — 120/240 SECONDARY VOLTS — FOUR WINDINGS — 1Ø, 60 Hz

KVA	CATALOG NO.	APPROX. DIMENSIONS Inches (cm.)			APPROX. SHIP WEIGHT Lbs. (Kg.)	TYPE MTG. W – Wall F – Floor	KNOCKOUTS Inches (Cm.)	WEATHER SHIELD P/N	Wiring Diagrams & Design Figures Begin on Page 122
		HEIGHT	WIDTH	DEPTH					
① .05	T153004	6.41 (16.3)	3.14 (8.0)	3.05 (7.7)	4 (1.8)	W	0.875 (2.2)	NA	1-A
① .10	T153005	7.16 (18.2)	3.89 (9.9)	3.67 (9.3)	5 (2.3)	W	0.875 (2.2)	NA	1-A
① .15	T153006	7.16 (18.2)	3.89 (9.9)	3.67 (9.3)	7 (3.2)	W	0.875 (2.2)	NA	1-A
① .25	T253007S	8.68 (22.0)	4.08 (10.4)	3.88 (9.9)	10 (4.5)	W	0.50-0.75 (1.3-1.9)	NA	2-B
① .50	T253008S	9.06 (23.0)	4.37 (11.1)	4.20 (10.7)	15 (6.8)	W	0.50-0.75 (1.3-1.9)	NA	2-B
① .75	T253009S	9.68 (24.6)	4.75 (12.1)	4.50 (11.4)	19 (8.6)	W	0.50-0.75 (1.3-1.9)	NA	2-B
1.00	T253010S	10.50 (26.7)	5.50 (14.0)	5.13 (13.0)	24 (10.9)	W	0.50-0.75 (1.3-1.9)	NA	2-B
1.50	T253011S	11.62 (29.5)	5.50 (14.0)	5.13 (13.0)	30 (13.6)	W	0.50-0.75 (1.3-1.9)	NA	2-B
2.00	T253012S	13.00 (33.0)	5.50 (14.0)	5.13 (13.0)	38 (17.2)	W	0.50-0.75 (1.3-1.9)	NA	2-B
3.00	T253013S	11.50 (29.2)	10.31 (26.2)	7.13 (18.1)	55 (24.9)	W	0.75-1.25 (1.9-3.2)	NA	2-C
3.00	T2530134S	11.50 (29.2)	10.31 (26.2)	7.13 (18.1)	55 (24.9)	W	0.75-1.25 (1.9-3.2)	NA	3-C
5.00	T253014S	14.38 (36.5)	10.31 (26.2)	7.13 (18.1)	75 (34.0)	W	0.75-1.25 (1.9-3.2)	NA	2-C
5.00	T2530144S	14.38 (36.5)	10.31 (26.2)	7.13 (18.1)	75 (34.0)	W	0.75-1.25 (1.9-3.2)	NA	3-C
7.50	T2535153S	15.19 (38.6)	13.50 (34.3)	10.84 (27.5)	115 (52.2)	W	0.75-1.25 (1.9-3.2)	NA	4-D
10.00	T2535163S	15.19 (38.6)	13.50 (34.3)	10.84 (27.5)	125 (56.7)	W	0.75-1.25 (1.9-3.2)	NA	4-D
15.00	T2535173S	16.94 (43.0)	14.12 (35.9)	11.59 (29.4)	170 (77.1)	W	1.00-1.50 (2.5-3.8)	NA	4-D
25.00	T2535183S	18.44 (46.8)	16.13 (41.0)	13.34 (33.9)	250 (113.0)	W	1.00-1.50 (2.5-3.8)	NA	4-D
37.50	TP530193S	25.50 (64.8)	24.39 (61.9)	19.37 (49.2)	280 (127.0)	F②	NA	WSA1	5-E
50.00	TP530203S	25.50 (64.8)	24.39 (61.9)	19.37 (49.2)	350 (158.8)	F②	NA	WSA1	5-E
75.00	TP530213S	35.47 (90.1)	31.90 (81.0)	26.88 (68.3)	430 (195.0)	F	NA	WSA3	5-E
100.00	TP530223S	41.52 (105.5)	32.90 (83.6)	29.87 (75.9)	525 (238.0)	F	NA	WSA4	5-E
167.00	TP530233S	45.60 (115.8)	39.50 (100.3)	35.50 (90.2)	1050 (476.3)	F	NA	WSA5	5-E
250.00	TP530243S	45.60 (115.8)	39.50 (100.3)	35.50 (90.2)	1440 (653.2)	F	NA	WSA5	5-E

Notes: 0.05 through 25.0 kVA encapsulated (exempt from TP1), 37.5 through 250.0 kVA TP1 compliant

## GROUP I-316SS

## 316 STAINLESS STEEL

## 240 X 480 PRIMARY VOLTS — 120/240 SECONDARY VOLTS — FOUR WINDINGS — 1Ø, 60 Hz

KVA	CATALOG NO.	APPROX. DIMENSIONS Inches (Cm.)			APPROX. SHIP WEIGHT Lbs. (Kg.)	TYPE MTG. W – Wall F – Floor	KNOCKOUTS Inches (Cm.)	WEATHER SHIELD P/N	Wiring Diagrams & Design Figures Begin on Page 122
		HEIGHT	WIDTH	DEPTH					
0.25	T253007SS	8.68 (22.0)	4.08 (10.4)	3.88 (9.9)	10 (4.5)	W	NA	NA	2-B
0.50	T253008SS	9.06 (23.0)	4.37 (11.1)	4.20 (10.7)	15 (6.8)	W	NA	NA	2-B
0.75	T253009SS	9.68 (24.6)	4.75 (12.1)	4.50 (11.4)	19 (8.6)	W	NA	NA	2-B
1.00	T253010SS	10.50 (26.7)	5.50 (14.0)	5.13 (13.0)	24 (10.9)	W	NA	NA	2-B
1.50	T253011SS	11.62 (29.5)	5.50 (14.0)	5.13 (13.0)	30 (13.6)	W	NA	NA	2-B
2.00	T253012SS	13.00 (33.0)	5.50 (14.0)	5.13 (13.0)	38 (17.2)	W	NA	NA	2-B
3.00	T253013SS	11.50 (29.2)	10.31 (26.2)	7.13 (18.1)	55 (24.9)	W	NA	NA	3-C
5.00	T253014SS	14.38 (36.5)	10.31 (26.2)	7.13 (18.1)	75 (34.0)	W	NA	NA	3-C
7.50	T253515SS	15.19 (38.6)	13.50 (34.3)	10.84 (27.5)	115 (52.2)	W	NA	NA	4-D
10.00	T253516SS	15.19 (38.6)	13.50 (34.3)	10.84 (27.5)	125 (56.7)	W	NA	NA	4-D
15.00	T253517SS	16.94 (43.0)	14.12 (35.9)	11.59 (29.4)	170 (77.1)	W	NA	NA	4-D
25.00	T253518SS	18.44 (46.8)	16.13 (41.0)	13.34 (33.9)	250 (113.0)	W	NA	NA	4-D

Notes: 0.25 through 25.0 kVA encapsulated (exempt from TP1)

① Suitable for 50/60 Hz.

② Wall mounting brackets are available for these sizes, refer to page 133.

# Economical Auto Arrangements

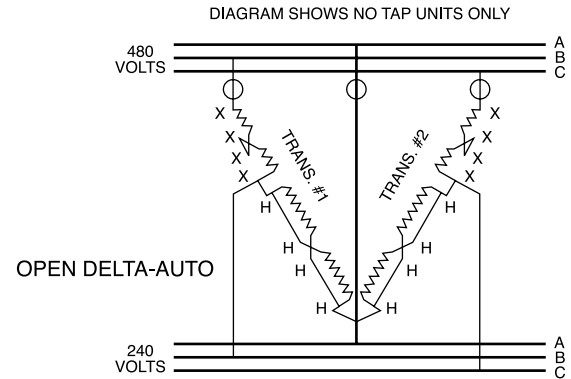
## Using two single phase transformers



### THREE PHASE

**480 PRIMARY (open delta) VOLTS —  
240 SECONDARY (open delta) VOLTS — 3Ø, 60 Hz**

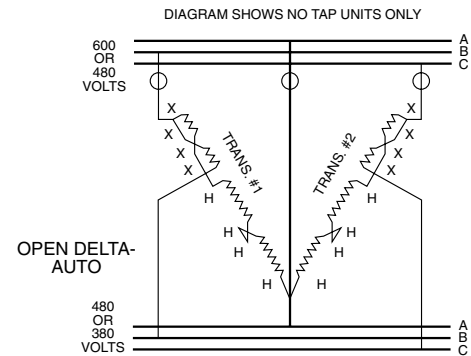
kVA ①	Qty. ②	Catalog No. ③	Primary Full Load Amps	Secondary Full Load Amps	Max. Size Fuse or Breaker
3.0	2	T253010S	3.60	7.20	10
5.0	2	T253011S	6.00	12.00	10
6.0	2	T253012S	7.20	14.40	15
10.0	2	T2530134S	12.00	24.00	15
17.0	2	T2530144S	20.50	40.80	30
26.0	2	T2535153S	31.50	63.00	40
34.0	2	T2535163S	41.00	81.60	60
52.0	2	T2535173S	63.00	125.00	80
86.0	2	T2535183S	104.00	206.30	150
130.5	2	TP530193S	157.00	314.00	200
173.0	2	TP530203S	209.00	418.00	300
259.0	2	TP530213S	312.00	623.00	400
346.0	2	TP530223S	417.00	834.00	600
578.0	2	TP530233S	696.00	1392.00	1000
865.0	2	TP530243S	1041.00	2082.00	1600



⑤ ○ = Fuse Location NEC 450-4, 1990.

**600 PRIMARY VOLTS — 480 SECONDARY (open delta) VOLTS — 3Ø, 60 Hz  
480 PRIMARY VOLTS — 380 SECONDARY (open delta) VOLTS — 3Ø, 50/60 Hz**

Pri. 600V Sec. 480V kVA ①	Pri. Amps	Sec. Amps	Pri. 480V Sec. 380V kVA ①	Pri. Amps	Sec. Amps	Qty ②	Catalog No. ③	Max. Size Fuse or Breaker
8.0	7.70	9.60	6.5	7.80	9.60	2	T253010S	15
12.0	11.55	14.40	9.5	11.55	14.40	2	T253011S	15
17.0	16.33	20.41	13.5	16.33	20.41	2	T253012S	25
25.0	24.06	30.01	20.0	24.06	30.01	2	T2530134S	30
43.0	41.38	51.70	34.0	41.38	51.70	2	T2530144S	60
64.0	61.59	77.00	51.0	61.59	77.00	2	T2535153S	80
86.0	82.76	103.44	68.0	82.76	103.44	2	T2535163S	110
129.0	124.13	155.20	103.0	124.13	155.20	2	T2535173S	175
216.0	207.85	259.80	172.0	207.85	259.80	2	T2535183S	300
324.0	311.78	389.70	259.0	311.78	389.70	2	TP530193S	400
433.0	416.67	520.83	346.0	416.67	520.83	2	TP530203S	600
650.0	625.00	781.00	519.0	625.00	781.00	2	TP530213S	800
865.0	833.00	1040.00	692.0	833.00	1051.00	2	TP530223S	1200
1445.0	1391.00	1738.00	1156.0	1391.00	1756.00	2	TP530233S	2000
2164.0	2083.00	2602.00	1731.0	2083.00	2629.00	2	TP530243S	3000



⑤ ○ = Fuse Location NEC 450-4, 1990.

① kVA capacity of three phase autotransformer bank, using two single phase, 60 Hz transformers connected open delta.

② Catalog No. is for 1 transformer, 2 units are required.

③ Can be reverse connected with no change in kVA.

④ For transformer dimensions, refer to appropriate table in section 1, page 17.

⑤ For proper overcurrent protection, refer to Article 450-4 of N.E.C.

The diagrams above are for illustration purposes only. Please contact the factory for construction details.

Each Acme transformer is shipped with detailed wiring diagrams. Refer to nameplate located inside the front cover for specific voltage tap combinations.

# Auto Zig-Zag Grounding Transformers

For developing a neutral from a three phase, 3-wire supply



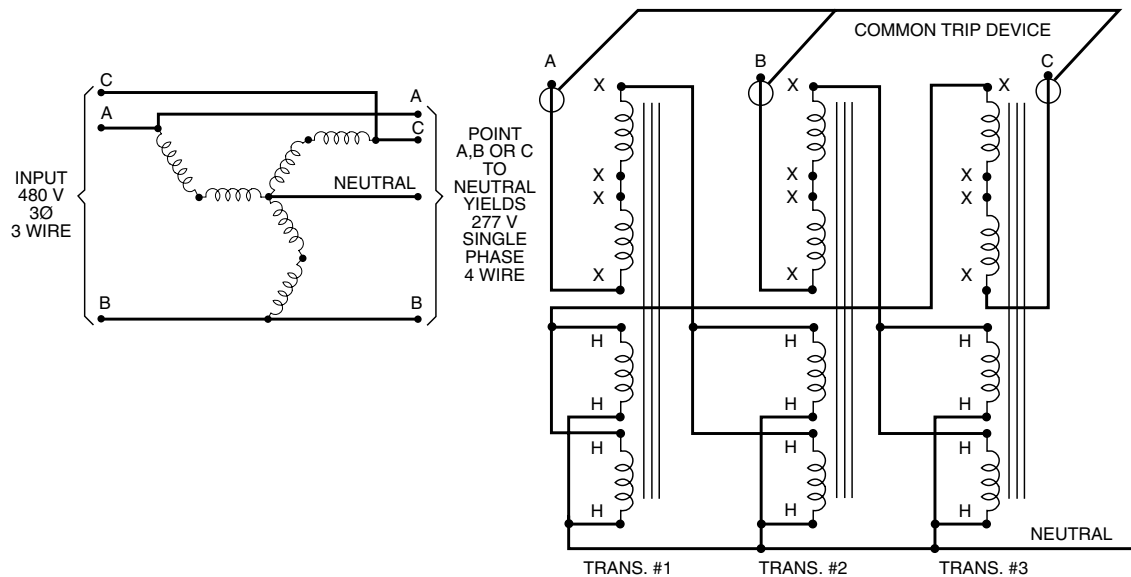
**PRIMARY (INPUT): 480 VOLTS  
3Ø, 3 WIRE**

① 50/60 Hz

**SECONDARY (OUTPUT): 480Y/277 VOLTS  
3Ø, 4 WIRE**

Use 3 Pieces of Type No. ④	Available In	Nameplate kVA For Each Tfmr.	No. of Tfmr. Required	Three Phase kVA	Max. Continuous Amp. Load Per Phase (277 Volts)
T253010S	No Taps Only	1.0	3	10.80	12.50
T253011S	No Taps Only	1.5	3	15.60	18.75
T253012S	No Taps Only	2.0	3	20.70	25.00
T2530134S	Taps & No Taps	3.0	3	31.20	37.50
T2530144S	Taps & No Taps	5.0	3	51.90	62.50
T2535153S	With Taps Only	7.5	3	78.00	93.50
T2535163S	With Taps Only	10.0	3	103.80	125.00
T2535173S	With Taps Only	15.0	3	156.00	187.50
T2535183S	With Taps Only	25.0	3	259.50	312.00
TP530193S	With Taps Only	37.5	3	390.00	468.00
TP530203S	With Taps Only	50.0	3	519.00	625.00
TP530213S	With Taps Only	75.0	3	780.00	935.00
TP530223S	With Taps Only	100.0	3	1038.00	1250.00
TP530233S	With Taps Only	167.0	3	1734.00	2085.00

See Footnote ②



○ = Fuse Location NEC 450-4, 1990. ③

- ① Applicable for the above connection only.
- ② Connection diagram (using 3 pieces of 1 phase, 60 hertz transformers connected zig-zag auto) for developing a neutral (4th wire) from a 3 phase, 3 wire supply.
- ③ For proper over-current protection, refer to the N.E.C. Article 450-5.
- ④ For transformer dimensions, refer to appropriate table in section 1, page 17.

**Each Acme transformer is shipped with detailed wiring diagrams. Refer to nameplate located inside the front cover for specific voltage tap combinations.**