

## PLASTI-BOND REDH<sub>2</sub>O<sub>T</sub> COATED BEAM CLAMPS AND U-BOLTS

### Beam Clamps and U-Bolts Specifications

#### APPLICATION

PLASTI-BOND PVC coated beam clamps are used to securely support conduit runs by attaching them to beams, angles, trusses and other structural members. They are available in four different styles:

**Right Angle** – to attach the conduit run at a 90° angle to a beam or structural member.

**Parallel** – to attach the conduit run parallel to a beam or structural member.

**Edge** – to attach the conduit run at a 90° angle to a thin beam or structural member.

**Hanger Rod Beam Clamp** – to attach a single all thread rod to a beam or structural member.

#### FEATURES

- 40 mil gray PVC exterior coating on right angle clamps.
- 20 mil gray PVC exterior coating on parallel and edge clamps.
- Right angle clamps supplied with plastic encapsulated screws.
- All clamps specifically sized to fit PVC coated conduit.
- Right angle and parallel clamps available in 10 trade sizes 1/2" through 4".
- Edge clamps available in 3 trade sizes 1/2" through 1".
- Hanger rod beam clamps available with 5 different jaw openings 15/16" through 2 1/8"

#### COATED NUTS

FERROUS CATALOG #	Description
PBNUIT-KIT-1	5/16 ENC NUTS-RA,UBLT 1/2 -1 1/4
PBNUIT-KIT-2	3/8 ENC NUTS - RA,UBLT 1 1/2-6



Parallel Beam Clamp



Edge Beam Clamp



Right Angle Beam Clamp



U bolt

#### PARALLEL CONDUIT CLAMP

Pipe Size	FERROUS Catalog #	Nominal Weight
1/2"	PBPAR-1/2	46.8
3/4"	PBPAR-3/4	63.0
1"	PBPAR-1	67.0
1-1/4"	PBPAR-1-1/4	100.0
1-1/2"	PBPAR-1-1/2	130.0
2"	PBPAR-2	158.0
2-1/2"	PBPAR-2-1/2	175.0
3"	PBPAR-3	200.0
3-1/2"	PBPAR-3-1/2	250.0
4"	PBPAR-4	275.0

#### EDGE STYLE CONDUIT CLAMP

Pipe Size	FERROUS Catalog #	Nominal Weight
1/2"	PBEDGE-1/2	74.0
3/4"	PBEDGE-3/4	90.0
1"	PBEDGE-1	100.0

#### RIGHT ANGLE CONDUIT CLAMP

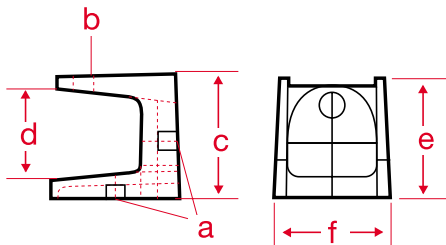
Pipe Size	FERROUS Catalog #	Nominal Weight
1/2"	PBRA-1/2	49.0
3/4"	PBRA-3/4	53.0
1"	PBRA-1	61.0
1-1/4"	PBRA-1-1/4	65.0
1-1/2"	PBRA-1-1/2	92.0
2"	PBRA-2	100.0
2-1/2"	PBRA-2-1/2	125.0
3"	PBRA-3	150.0
3-1/2"	PBRA-3-1/2	175.0
4"	PBRA-4	198.0

#### CONDUIT U-BOLT

Pipe Size	FERROUS Catalog #	Nominal Weight
1/2"	PBU-BOLT-1/2	17.0
3/4"	PBU-BOLT-3/4	18.0
1"	PBU-BOLT-1	20.0
1-1/4"	PBU-BOLT-1-1/4	20.0
1-1/2"	PBU-BOLT-1-1/2	31.0
2"	PBU-BOLT-2	34.0
2-1/2"	PBU-BOLT-2-1/2	39.0
3"	PBU-BOLT-3	44.0
3-1/2"	PBU-BOLT-3-1/2	45.0
4"	PBU-BOLT-4	49.0
5"	PBU-BOLT-5	100.0
6"	PBU-BOLT-6	130.0

#### BEAM CLAMPS

Pipe Size	FERROUS Catalog #	A	B	C	D	E	F	Nominal Weight	Maximum Load
1"	PB500	1/4-20	5/16-1-1/8	1-3/8	7/8	1-1/4	1-1/8	25	500
1-1/4"	PB501	5/16-18	3/8-16	1-3/4	7/8	1-5/8	1-1/2	50	800
1-1/2"	PB502	3/8-16	1/2-13	2-1/16	7/8	2	2	90	2000
2"	PB503	1/2-13	1/2-13	2-5/8	1	1-1/4	1-1/8	195	2000
2-1/2"	PB508	1/2-13	1/2-13	2-1/4	7/8	2-1/2	2-5/8	25	4000



#### APPROVAL STAMP