

PHILIPS Stonco

Floodlighting

EQX Quartz Floodlight



Project: _____

Location: _____

Cat.No: _____

Type: _____

Quantity: _____

Notes: _____

EQX Series Quartz Floods are for use in open area general purpose floodlighting applications. Popular uses include residential and commercial security lighting, and sign lighting.

Ordering guide

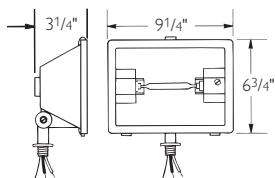
Example: EQX500LWHT

Fixture	Option	Wattage	Lamp	Finish
<input type="checkbox"/> EQ	<input type="checkbox"/> X	<input type="text"/>	<input type="text"/>	<input type="text"/>
EQ Quartz Flood	X Lens with frame	500 Up to 500W 1500¹ 1500W	L² Lamp included (500W only)	BLANK Bronze finish (standard) WHT² White finish (500W only)

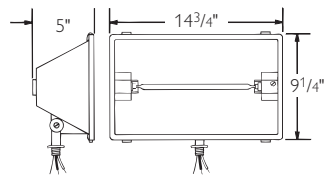
- 1500W lamp ordered separately (available in 208, 240 and 277V only).
- Only available with 500W.

Technical Information

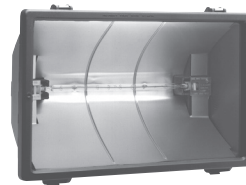
EQX Series Quartz Floods are supplied with Tungsten-halogen T-3 lamp. Must be oriented with 4° of horizontal.



EQX500L



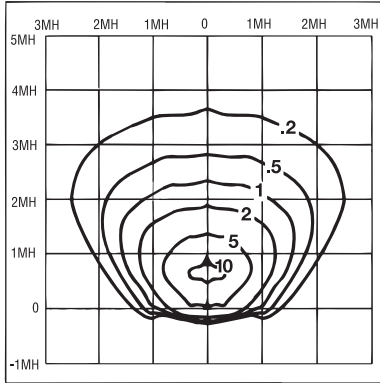
EQX1500



EQX1500

EQX Quartz Floodlight

Photometrics



FOOTCANDLE MULTIPLIERS

Multiply the following factors times the footcandle values for changes in mounting height.

To Change from 15'

New Height	8'	10'	15'	20'	25'
Factor	3.5	2.3	1.0	.60	.36

EQX500L

Q500T3/CL
10,500 Lumens
15' Mounting Height
45° Aim

Housing

Die-cast aluminum housing.

Lens

Silicone gasket seals lens to body. Sockets with integral spring maintain contact.

Reflector

Anodized aluminum reflector provides wide distribution.

Mounting

1/2" Threaded arm mounts to any standard hardware.

WARNINGS AND CAUTIONS

- Not for use indoors
- Not for use in dwellings
- Not for use in areas that may entrap heat
- Not for use in hazardous area, i.e. painting
- Not for use in ambients above 80°F
- Not for use in areas with vibration
- Not for use as a portable fixture

© 2015 Koninklijke Philips N.V. All rights reserved.
Philips reserves the right to make changes in specifications and/or to discontinue any product at any time without notice or obligation and will not be liable for any consequences resulting from the use of this publication.
philips.com/luminaires



Philips Lighting North America Corporation
200 Franklin Square Drive, Somerset, NJ 08873
Tel. 855-486-2216

Imported by: Philips Lighting,
A division of Philips Electronics Ltd.
281 Hillmount Rd, Markham, ON, Canada L6C 2S3
Tel. 800-668-9008