

SOX

SOX 180W BY22d 1SL/6

Low Pressure Sodium lamp

Product data

• General Information

Cap-Base	BY22D
Bulb Shape	T65 [T 65mm]
Operating Position	P20 [Parallel +/-20D or Horizontal(HOR)]
Life To 5% Failures (Nom)	6000 h
Life To 20% Failures (Nom)	12000 h
Life To 50% Failures (Nom)	18000 h

• Light Technical

Luminous Flux (Rated) (Nom)	32000 lm
Lumen Maintenance 2000 h (Nom)	90 %
Lumen Maintenance 5000 h (Nom)	80 %
Correlated Color Temperature (Nom)	1800 K
Luminous Efficacy (rated) (Nom)	176 lm/W

• Operating and Electrical

Power (Rated) (Nom)	180.0 W
Lamp Current (Nom)	0.78 A
Voltage (Nom)	240 V

• Controls and Dimming

Dimmable	No
----------	----

• Approval and Application

Energy Efficiency Label (EEL)	A++
Mercury (Hg) Content (Nom)	0 mg
Energy Consumption kWh/1000 h	203 kWh

• Luminaire Design Requirements

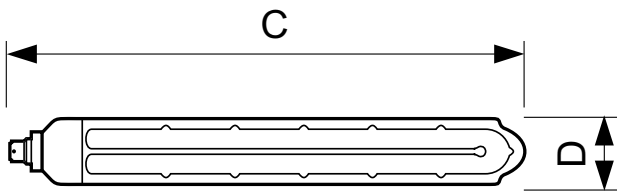
Bulb Temperature (Max)	150 °C
Cap-Base Temperature (Max)	150 °C

• Product Data

Full product code	871150017981410
Order product name	SOX 180W BY22d 1SL/6
EAN/UPC - Product	8711500179814
Order code	928147500008
Numerator - Quantity Per Pack	1
Numerator - Packs per outer box	6
Material Nr. (12NC)	928147500008
Net Weight (Piece)	1.033 kg
ILCOS Code	LS-180-BY22d

PHILIPS

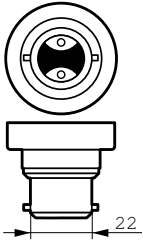
Dimensional drawing



BY22d, T50/T65

SOX 180W BY22d T65

Product	D	C
SOX 180W BY22d 15L/6	66 mm	1120 mm



© 2016 Philips Lighting Holding B.V.
All rights reserved.

Specifications are subject to change without notice. Trademarks are the property of Koninklijke Philips N.V. (Royal Philips) or their respective owners.

www.philips.com/lighting

2016, March 7
data subject to change