



Double Ended Linear

Double Ended Linear BC150T3Q/CL LONG 12/1

High-quality white light with superior lumen performance. Halogen Double Ended lamps provide bright, white light for work lights and security lighting. Rugged construction for busy work sites. Offered in several lengths to meet most application needs. High lumen output provides light where you need it.

Product data

• General Information

Cap-Base	R7S [R7s]
Bulb Shape	T3 [T 12mm (T3)]
Operating Position	P4 [Parallel +/-4D or Horizontal(HOR)]
Nominal Lifetime (Nom)	2000 h

• Light Technical

Luminous Flux (Nom)	2000 lm
Correlated Color Temperature (Nom)	2900 K
Luminous Efficacy (rated) (Nom)	13.3 lm/W
Color Rendering Index (Nom)	100

• Operating and Electrical

Power (Rated) (Nom)	150 W
Lamp Current (Nom)	1.25 A
Starting Time (Nom)	0.0 s
Voltage (Nom)	120 V

• Controls and Dimming

Dimmable	Yes
----------	-----

• Mechanical and Housing

Bulb Finish	Clear
-------------	-------

• Approval and Application

Energy Efficiency Label (EEL)	E
-------------------------------	---

• Luminaire Design Requirements

Bulb Temperature (Max)	900 °C
Pinch Temperature (Max)	350 °C

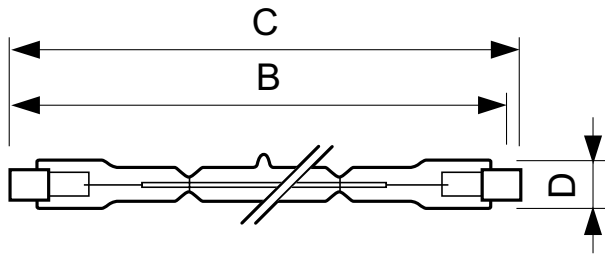
• Product Data

Order product name	Double Ended Linear BC150T3Q/CL LONG 12/1
EAN/UPC - Product	046677415754
Order code	924884836301
Numerator - Quantity Per Pack	1
Numerator - Packs per outer box	12
Material Nr. (12NC)	924884836301
Net Weight (Piece)	0.008 kg

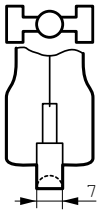
PHILIPS

Double Ended Linear

Dimensional drawing



R7s



DESmall 150W R7s 120V T3 CL

Product	D	B	B	B	C
Double Ended Linear BC150T3Q/CL LONG 12/1	12 mm	115.8 mm	114.2 mm	112.6 mm	117.6 mm



© 2015 Philips Lighting Holding B.V.
All rights reserved.

Specifications are subject to change without notice. Trademarks are the property of Koninklijke Philips N.V. (Royal Philips) or their respective owners.

www.philips.com/lighting

2015, November 29
data subject to change