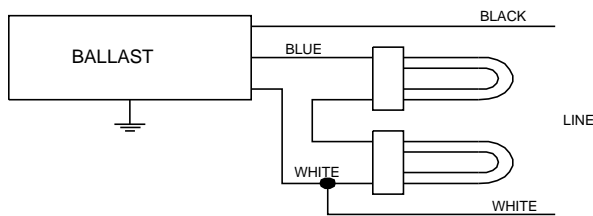


Electrical Specifications

H-2Q26-TP-BLS	
Brand Name	COMPACT-HPF
Ballast Type	Magnetic
Starting Method	Pre-Heat
Lamp Connection	Series
Input Voltage	120
Input Frequency	60 HZ
Status	Active

Lamp Type	Num. of Lamps	Rated Lamp Watts	Min. Start Temp (°F/C)	Input Current (Amps)	Starting Current (Amps)	Open Circuit (Amps)	Input Power (Watts)	Ballast Factor	MAX THD %	Power Factor
* CFM26W/GX24D	2	26	50/10	0.45	0.00	0.00	54	0.92	15	0.99
CFQ26W/G24D	2	26	50/10	0.44	0.00	0.00	52	0.90	15	0.99

Wiring Diagram



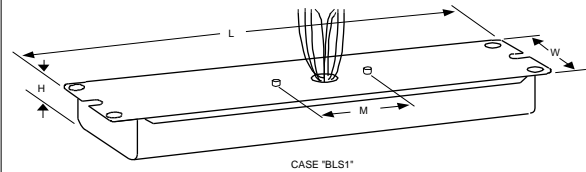
Diag. 50

The wiring diagram that appears above is for the lamp type denoted by the asterisk (*)

Standard Lead Length (inches)

	in.	cm.		in.	cm.
Black	7	17.8	Yellow/Blue		0
White	7	17.8	Blue/White		0
Blue	7	17.8	Brown		0
Red		0	Orange		0
Yellow		0	Orange/Black		0
Gray		0	Black/White		0
Violet		0	Red/White		0

Enclosure



Enclosure Dimensions

OverAll (L)	Width (std)/(TP)	Height (H)	Mounting (M)
8.5 "	2.3125 "	1.6875 "	2 "
8 1/2	2 5/16	1 11/16	2
21.6 cm	5.9 cm / 0 cm	4.3 cm	5.1 cm

Revised 07/10/2000



Data is based upon tests performed by Philips Lighting Electronics N.A. in a controlled environment and is representative of relative performance. Actual performance can vary depending on operating conditions. Specifications are subject to change without notice. All specifications are nominal unless otherwise noted.

PHILIPS LIGHTING ELECTRONICS N.A.

10275 WEST HIGGINS ROAD · ROSEMONT, IL 60018

Tel: 800-322-2086 · Fax: 888-423-1882 · www.philips.com/advance

Customer Support/Technical Service: 800-372-3331 · OEM Support: 866-915-5886