



Core & Coil Replacement Kits

High Pressure Sodium

Input Volts	Catalog Number	Circuit Type	Total Weight (Lbs)	Certifications	
35W Lamp, ANSI Code S76					
120	71A7707-001DB	R-HPF	1.5	✓	✓
50W Lamp, ANSI Code S68					
120	71A7807-001DB	R-HPF	1.9	✓	✓
120/277	71A7801-001D	HX-HPF	3.5	✓	✓
120/208/240/277	71A7891-001D	HX-HPF	5.6	✓	✓
70W Lamp, ANSI Code S62					
120	71A7907-001DB	R-HPF	2.5	✓	✓
120/208/240/277	71A7971-001D	HX-HPF	5.5	✓	✓
100W Lamp, ANSI Code S54					
120	71A8007-001DB	R-HPF	3.1	✓	✓
120/208/240/277	71A8071-001D	HX-HPF	7.3	✓	✓
120/208/240/277	71A8091-001DC	HX-HPF	7.3	✓	✓
480	71A8041-001D	HX-HPF	7.0	✓	✓
150W Lamp, ANSI Code S55					
120	71A8107-001DB	R-HPF	4.0	✓	✓
120/208/240/277	71A8172-001D	HX-HPF	8.0	✓	✓
120/208/240/277	71A8192-001DC	HX-HPF	8.0	✓	✓
480	71A8142-001D	HX-HPF	9.5	✓	✓
150W Lamp, ANSI Code S56					
120/208/240/277	71A8176-001D	CWA	8.5	✓	✓
480	71A8146-001D	CWA	8.5	✓	✓

HPS Kit Options

In addition to the standard kits, this and the following page include two HPS kits with special features:

HPS Reactor Kits with Integral Ignitors

"B" Suffix denotes 120V reactor circuit kits featuring single-coil reactor ballasts with integral ignitors. The kit includes a mounting bracket (PC848S) sized specifically for the small reactor ballasts.

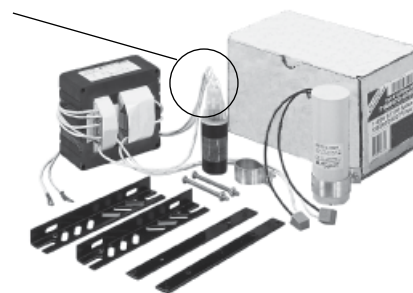
Compact Reactor Core and Bracket



HPS Kits with Plug-In Ignitors

"C" Suffix (p.5-8) denotes standard HPS kit except with plug-in ignitor. A mating receptacle is attached to the core and coil lead wires, ready for immediate connection.

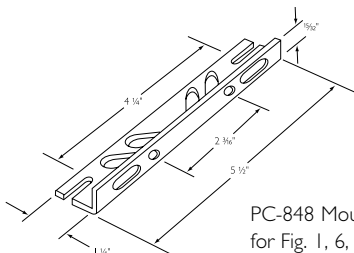
Connectorized ignitor and mating receptacle



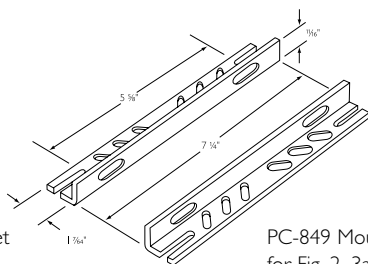
HID Replacement Kits

Core & Coil Mounting Brackets

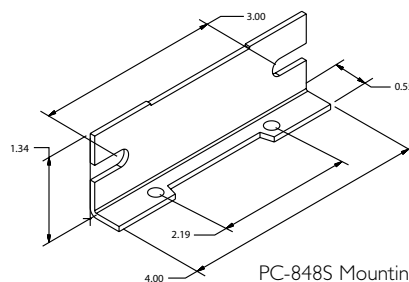
Included with all Replacement Kits



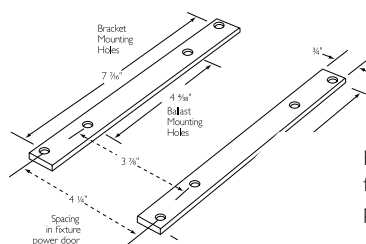
PC-848 Mounting bracket for Fig. 1, 6, 7 & 9



PC-849 Mounting bracket for Fig. 2, 3a, 8, 8a & 10.



PC-848S Mounting bracket for Fig. 9.



PC-909 Mounting bracket for Fig. 2, 3a & 8 when used with power-door roadway fixtures

- PC-848: To order individual packaged kits, specify PKG 848 (1 brackets with thru bolts).
- PC-849: To order individual packaged kits, specify PKG 849-2 (2 brackets with thru bolts).
- PC-848S: Bracket and thru bolts are included in 120V HPS Reactor Kits.



60 Hz Core & Coil Ballasts

High Pressure Sodium



Input Volts	Catalog [†] Number	Circuit Type	Input Watts	Max Input Current	Nom Open Circuit Voltage	Fuse Rating (Amps)	Wiring Dia	Dimensions			Non-PCB Capacitor (Page 5-38 & 5-39)				Total Weight (lbs)	Ignitor †† (Page 5-40 to 5-44)		U.L. Bench Top Rise Code 1029 (pg 5-4)
								Fig	A	B	Mfd	Min Volt	Cap Catalog Number	Dry or Oil		Part Number	Max Dist To Lamp (ft)	
100W Lamp, ANSI Code S54																		
120	71A8007-500D	R-HPF	115	1.8	120	5	G	9	1.5	2.7	36	120	7C360M12RA	D	2.8	LI551-H4	2	A
120	71A8007-500DB 71A8007-001DB	R-HPF	115	1.8	120	5	H	9	1.5	2.7	36	120	7C360M12RA	D	2.8	Integral Ignitor	2	A
220	71A80J1-500D	HX-HPF	130	1.2	120	3	K	1	2.0	3.3	10	280	7C100M30RA	D	7.2	LI551-H4	2	B
480	71A8041-500D 71A8041-001D	HX-HPF	130	.6	120	3	K	1	2.3	3.6	10	280	7C100M30RA	D	7.5	LI551-H4	2	E
120/208/240/277	71A8091-500D	HX-HPF	130	2.2/1.3/1.1/9	120	7/5/3/3	K	1	2.0	3.6	10	280	7C100M30RA	D	7.2	LI551-H4	2	D/F/D/D
120/208/240/277	71A8071-001D	HX-HPF	130	2.2/1.3/1.1/9	120	7/5/3/3	K	1	2.0	3.6	10	280	7C100M30RA	D	7.2	LI551-H4	2	D/F/D/D
120/277/347	71A80A1-500D 71A80A1-001D	HX-HPF	130	2.2/9/7	120	7/3/3	K	1	2.3	3.6	10	280	7C100M30RA	D	7.5	LI551-H4	2	C/C/D
120/277	71A8088-500D	CWA	138	1.2/5	115	3/2	M	1	2.0	3.3	34	170	7C340P24RA	D	7.5	LI551-J4	5	F/F
NOM 127/220	71A80H8-500DMLA	CWA	138	1.1/7	115	3/2	M	1	2.4	3.7	34	170	7C340P24RA	D	7.5	LI551-J4	5	E/D
NOM 230	71A80J8-500DML	CWA	136	0.7	118	2	M	1	2.0	3.3	34	170	7C350P24RA	D	7.5	LI551-J4	5	E
120/208/240	71A80E6-500D	CWI	130	1.2/7/6	110	3/2/2	V	1	2.1	3.4	35	170	7C350P24RA	D	6.8	LI551-J4	2	C/C/B

WELDED BRACKET DIMENSIONS

Ballast Dimensions Fig	L	W	M	S
1	5.1	1.00	4.50	0.25
9	4.0	0.75	3.50	0.28

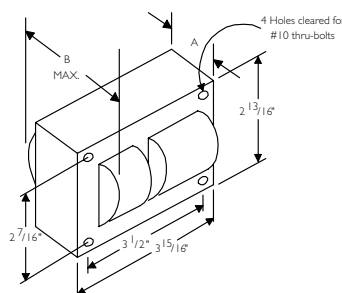
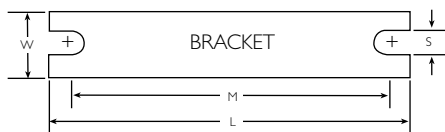


Fig. 1
(3" x 4" Core)

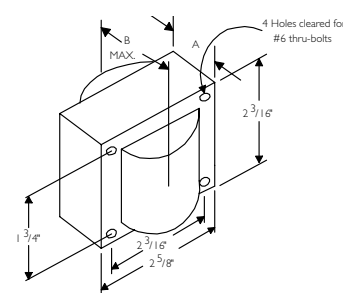


Fig. 9
(2⁵/₈" x 2³/₁₆" Reactor Core)

HID • Core & Coil
HPS