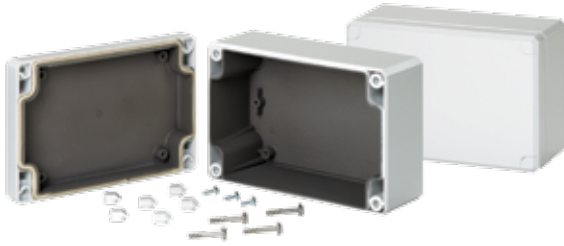


QLINE D, EMC, TYPE 4X



APPLICATION

QLINE D polycarbonate EMC enclosures have contoured bodies and flush cover screws for an attractive, contemporary appearance while also providing EMC protection in corrosive environments.

SPECIFICATIONS

- Body is impact-resistant polycarbonate
- EMC conductive coating in base and cover
- Gasket of silver/silicone
- Mounting holes molded directly under cover screws
- Cross-point captivated cover screws are stainless steel
- Mounting tracks along body side walls and bosses on cover for PC card installation
- Cover screws protected by removable caps that are both aesthetic and provide tamper resistance
- Molded internal pads for mounting optional panels, rails and other components
- Screws provided for mounting optional panel

INDUSTRY STANDARDS

UL 508A Listed; Type 4, 4X, 12, 13
 cUL Listed per CSA C22.2 No 94; Type 4, 4X, 12, 13; File No. E61997
 Enclosure flammability evaluated per UL 508A

NEMA/EEMAC Type 4, 4X, 12, 13
 IEC 60529, IP66

FINISH

Enclosure material is RAL 7035 light-gray outside. Optional panels are conductive steel.

BULLETIN: Q41EM

Standard Product

| Catalog Number | AxBxC mm/in. | External Dimensions L x W mm/in. | Internal Dimensions A x B x C mm/in. | Panel | Panel Size D x E mm/in. | Mounting G x H mm/in. | F mm/in. | J mm/in. | K mm/in. | P mm/in. | Q mm/in. | R mm/in. | S mm/in. | U mm/in. |
|----------------|--------------------|----------------------------------|--------------------------------------|---------|-------------------------|-----------------------|----------|----------|----------|----------|----------|----------|----------|----------|
| Q1286PCEMC | 120 x 80 x 55 | 120 x 80 | 114 x 74 x 49 | Q128PD | 91 x 65 | 108 x 50 | 42 | 40 | 15 | 58 | 82 | — | 96 | 3 |
| | 4.72 x 3.15 x 2.17 | 4.72 x 3.15 | 4.47 x 2.89 x 1.93 | | 3.58 x 2.56 | 4.25 x 1.97 | 1.65 | 1.57 | 0.59 | 2.28 | 3.21 | — | 3.78 | 0.12 |
| Q1289PCEMC | 120 x 80 x 85 | 120 x 80 | 113 x 73 x 79 | Q128PD | 91 x 65 | 108 x 50 | 72 | 70 | 15 | 58 | 82 | — | 96 | 3 |
| | 4.72 x 3.15 x 3.35 | 4.72 x 3.15 | 4.45 x 2.87 x 3.11 | | 3.58 x 2.56 | 4.25 x 1.97 | 2.83 | 2.76 | 0.59 | 2.28 | 3.21 | — | 3.78 | 0.12 |
| Q16129PCEMC | 160 x 120 x 90 | 160 x 120 | 153 x 113 x 84 | Q1612PD | 130 x 100 | 148 x 90 | 77.5 | 60 | 30 | 90 | 120 | — | 136 | 3 |
| | 6.30 x 4.72 x 3.54 | 6.30 x 4.72 | 6.02 x 4.45 x 3.29 | | 5.12 x 3.94 | 5.83 x 3.54 | 3.05 | 2.36 | 1.18 | 3.54 | 4.72 | — | 5.35 | 0.12 |
| Q1689PCEMC | 160 x 80 x 85 | 160 x 80 | 153 x 73 x 79 | Q168PD | 131 x 65 | 148 x 50 | 72 | 70 | 15 | 58 | 122 | — | 136 | 3 |
| | 6.30 x 3.15 x 3.35 | 6.30 x 3.15 | 6.02 x 2.87 x 3.11 | | 5.16 x 2.56 | 5.83 x 1.97 | 2.83 | 2.76 | 0.59 | 2.28 | 4.78 | — | 5.35 | 0.12 |
| Q20129PCEMC | 200 x 120 x 85 | 200 x 120 | 193 x 113 x 79 | Q2012PD | 170 x 100 | 188 x 90 | 72 | 70 | 15 | 90 | 160 | 40 | 176 | 3 |
| | 7.87 x 4.72 x 3.35 | 7.87 x 4.72 | 7.60 x 4.45 x 3.11 | | 6.69 x 3.94 | 7.40 x 3.54 | 2.83 | 2.76 | 0.59 | 3.54 | 6.30 | 1.57 | 6.93 | 0.12 |
| Q24169PCEMC | 240 x 160 x 90 | 240 x 160 | 233 x 153 x 84 | Q2416PD | 211 x 148 | 228 x 130 | 77.5 | 75 | 15 | 138 | 202 | 75 | 215 | 3.5 |
| | 9.45 x 6.30 x 3.54 | 9.45 x 6.30 | 9.17 x 6.02 x 3.29 | | 8.31 x 5.83 | 8.98 x 5.12 | 3.05 | 2.95 | 0.59 | 5.43 | 7.93 | 2.95 | 8.46 | 0.14 |

Purchase panels separately.

Q1286PCEMC QLINE D Enclosure Shielding Effectiveness

