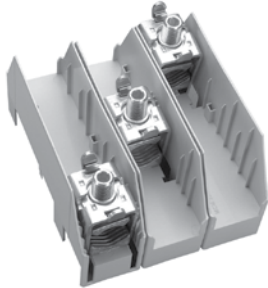


CONNECTING TERMINAL PLATE


Use to connect round conductors or flat flexible conductors to the busbar system and to feed or draw power to, from or between lengths of busbar. Each terminal plate comes with a cover cap providing finger-safe protection.

BULLETTIN: HB2

Catalog Number	Description	W x H (mm)	Current Capacity (max.)	Qty.	UL508	cUL
HB01240	AWG 10 – 1/0, s(r), f, f+AE, la. Cu 6 x 9 x 0.8	54 x 200	300 A	1	•	•
HB01243	AWG 2 – 250MCM, s(r), f, f+AE, la. Cu 6 / 10 x 15.5 x 0.8	81 x 200	440 A	1	•	•

CONNECTION SET, 3-POLE


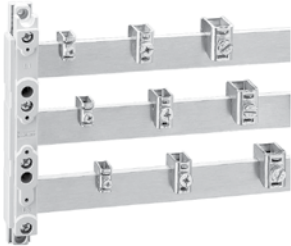
Modular design allows phase connections to be spread out along the busbar structure. Each phase conductor can be run parallel from the upstream or downstream device. These connection sets do not come with a cover cap – use Cover Cap or System Cover to gain finger-safe protection.

BULLETTIN: HB2

Catalog Number	Description	Current Capacity (max.)	Qty.	UL508	cUL
HB01537	CU and Al ^a AWG 4/0 – 600MCM, s(r), s(s), f	560 A	1	•	•
HB01538	Flat busbars up to 32 x 20 mm	800 A	1	•	•

^a Not maintenance-free when aluminum conductors are used.

Cover cap for HB01537 and HB01538 is HB01539 when the phase conductors are butted side-by-side (not spaced apart).

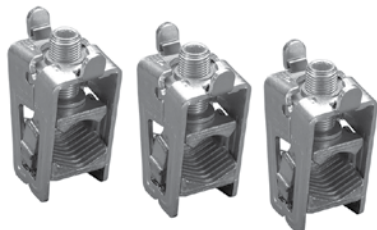
UNIVERSAL CONDUCTOR TERMINAL


Terminals for round American Wire Gauge (AWG) conductor are used to either supply power to or draw power from the busbar system. These parts must match the thickness of the busbar being applied in your system. Cover caps are sold separately. Sold in sets of three terminals.

BULLETTIN: HB2

Catalog Number	Description	Connection AWG (min.-max.)	Terminal Space H x W	Current Capacity (max.)	Qty.	UL508	cUL
HB01284	5-mm flat busbars	16-6	7.5 x 7.5 (mm)	180 A	3	•	•
HB01285	5-mm flat busbars	12-2	10.5 x 11 (mm)	270 A	3	•	•
HB01287	5-mm flat busbars	6-2/0	14 x 14 (mm)	400 A	3	•	•
HB01068	5-mm flat busbars	6-250 MCM	17 x 15 (mm)	440 A	3	•	•
HB01289	10-mm flat busbars	16-6	7.5 x 7.5 (mm)	180 A	3	•	•
HB01290	10-mm flat busbars	12-2	10.5 x 11 (mm)	270 A	3	•	•
HB01292	10-mm Double-T and Triple-T busbar sections	6-2/0	14 x 14 (mm)	400 A	3	•	•
HB01203	10-mm Double-T and Triple-T busbar sections	6-250 MCM	17 x 15 (mm)	440 A	3	•	•

Meets UL508 when properly installed.

CRITO® PROFICLIP, BRACE TERMINALS


20 x 5 – 30 x 10, Double-T and Triple-T
CRITO ProfiClip is a trademark of Wöhner GmbH & Co. KG.

BULLETTIN: HB2

Catalog Number	Description	Current Capacity (max.)	Qty.	UL508	cUL
HB01319	For flat busbars up to 30 mm x 20 mm	750 A	3	•	•
HB01318	Cu and Al ^a AWG 3/0 - 350 MCM	500 A	3	•	•
HB01759	For flat busbars up to 32 mm x 20 mm	800 A	3	•	•
HB01760	Cu and Al ^a AWG 3/0 - 350 MCM600 A	600 A	3	•	•

^a Not maintenance-free when aluminum conductors are used.

Meets UL508 when properly installed.