

A. System Overview

Pre-Printed Marker Books

B1. Cable Ties

- Convenient, pocket-sized book
- Markers are perforated and can be torn in half to mark both ends of conductors

- Terminal block markers are included to properly identify connectors
- Ten pages of markers per book

B2. Cable Accessories

B3. Stainless Steel Ties

Material Chart

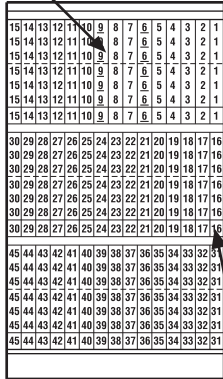
| Material | Print Method | Temperature Range | Features |
|--------------------|--------------|--------------------------------|--|
| Vinyl Cloth, White | Pre-Printed | -50°F to 170°F (-46°C to 77°C) | Indoor/outdoor rated; conformable material with repositionable adhesive allows label to be removed and reused or used in temporary applications; provides durability, high temperature resistance, and dimensional stability for rough or textured surfaces; resists oil and abrasion. |

C1. Wiring Duct

C2. Surface Raceway

C3. Abrasion Protection

Perforation for half marker



C4. Cable Management

D1. Terminals

D2. Power Connectors

D3. Grounding Connectors

Terminal Block Marker

| Part Number | Legend | Total Markers Each Legend | Std. Pkg. Book(s) | Std. Ctn. Book(s) |
|----------------|---|---------------------------|-------------------|-------------------|
| PCMB-1 | 0 thru 9 | 45 | 1 | 10 |
| PCMB-2 | A thru Z, 0 thru 15, +, -, / | 10 | 1 | 10 |
| PCMB-3 | 1 thru 45 | 10 | 1 | 10 |
| PCMB-4 | 1, 2, 3 | 150 | 1 | 10 |
| PCMB-5 | A, B, C | 150 | 1 | 10 |
| PCMB-6 | T1, T2, T3 | 150 | 1 | 10 |
| PCMB-7 | L1, L2, L3 | 150 | 1 | 10 |
| PCMB-8 | 1 thru 15 16 thru 90 A thru Z, +, -, /, 0 | 6 4 2 | 1 | 10 |
| PCMB-9 | 1, 2, 3, A, B, C L1, L2, L3, T1, T2, T3 | 45 30 | 1 | 10 |
| PCMB-10 | Solid NEMA colors red, yellow, white, light blue, light green, black, brown, orange, gray, dark green | 45 | 1 | 10 |
| PCMB-11 | 1 thru 30 | 15 | 1 | 10 |
| PCMB-12 | A thru Z + - Blank (write-on) | 15 8 7 21 | 1 | 10 |
| PCMB-13 | + , - , AC, DC POS, NEG, GND NEUT SPARE, Blank (write-on) | 45 21 21 21 | 1 | 10 |
| PCMB-14 | 46 thru 90 | 10 | 1 | 10 |
| PCMB-15 | 0, +, - 1 thru 45 | 15 10 | 1 | 10 |
| PCMB-16 | 0 thru 33, A, B, C, +, -, L1, L2, L3, T1, T2, T3 | 10 | 1 | 10 |
| PCMB-25 | 0 thru 9 L1, L2, L3, T1, T2, T3 | 45 15 | 1 | 10 |

Legend: Black Background: White

Marker sizes:

Full size marker – .22" x 1.38" (5.60mm x 34.90mm). Maximum wire O.D., .38" (9.50mm).

Half size marker – .22" x .69" (5.60mm x 17.40mm). Maximum wire O.D., .19" (4.70mm).

Terminal block marker – .22" x .25" (5.60mm x 6.30mm).

E1. Labeling Systems

E2. Labels

E3. Pre-Printed & Write-On Markers

E4. Permanent Identification

E5. Lockout/Tagout & Safety Solutions

F. Index