

# 3-Piece Couplings & Offset Nipples

## Threaded for Rigid Conduit & IMC

### Type 4

#### 3-piece Coupling

##### Use:

Couples conduit when neither can be turned.

##### Features:

- Threaded (NPS) for rigid conduit and IMC
- Couples conduits when conduits can not be turned
- Concretetight

##### Material/Finish:

Malleable Iron/Zinc Electroplated

##### Optional Finish:

For additional corrosion protection, specify Mechanically Galvanized  
Contact your local representative for pricing and availability.

##### Third Party Certification:

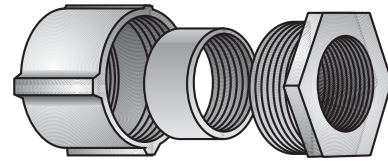


UL Listed: E-11853



CSA Certified: 009795

Trade Size (inches)	Catalog Number	Overall Length	Max. Dia.
1/2	4-50	1 3/8	1 7/16
3/4	4-75	1 3/8	1 3/4
1	4-100	1 13/16	1 15/16
1 1/4	4-125	2 3/16	2 3/8
1 1/2	4-150	2 3/16	2 5/8
2	4-200	2 7/16	3 3/8
2 1/2	4-250	3 3/16	4
3	4-300	3 3/16	4 3/16
3 1/2	4-350	3 1/2	5 1/8
4	4-400	3 3/4	5 1/2
5	4-500	3 11/16	6 7/8
6	4-600	4 5/16	8 1/4



Type 4

##### Applicable Third Party Standards:

UL Standard: 514B  
CSA Standard: C22.2 No. 18  
Fed. Spec./CID: A-A-50553  
ANSI/NEMA: FB-1

### Type ON

##### Use:

Provides box-to-box connection of knock-outs. Allows misaligned knockout connection by "rolling" the offset nipple until aligned with each knockout.

##### Feature:

- Hub-to-hub offset is 3/4".
- See "Body Length" in table for distance between boxes.
- Available with insulated throat.

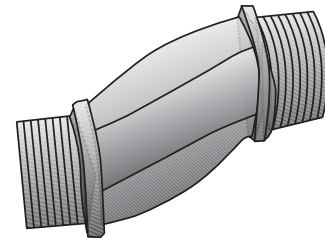
##### Material/Finish:

Malleable Iron/Zinc Electroplated

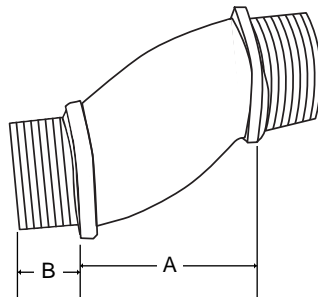
##### Optional Finish:

For additional corrosion protection, specify Mechanically Galvanized. Add suffix "G" to catalog number.  
Contact your local representative for pricing and availability.

Trade Size (inches)	Catalog Number	Insulated Throat Catalog Number	Dimensions in Inches		
			Body Length	Thread Length Each End	Type Thread
1/2	ON-50	ON-50T	1 5/8	1/2	NPS
3/4	ON-75	ON-75T	1 5/8	1/2	NPS
1	ON-100	ON-100T	1 5/8	9/16	NPS
1 1/4	ON-125	ON-125T	1 5/8	5/8	NPT
1 1/2	ON-150	ON-150T	1 1/2	3/4	NPT
2	ON-200	ON-200T	1 1/2	13/16	NPT



Type ON



##### Third Party Certification:



UL Listed: E-11853



CSA Certified: 009797

##### Applicable Third Party Standards:

UL Standard: 514B  
CSA Standard: C22.2 No. 18  
Fed. Spec: W-F-408E  
NEMA: FB-1

# Hex Reducing Bushings & Bushed Conduit Nipples

Threaded for Rigid Conduit & IMC

## Type 300R

Provided with hex shoulder

### Use:

To reduce a threaded conduit entry into a smaller trade size.

### Material/Finish:

Malleable Iron/Zinc Electroplated

### Third Party Certification:



UL Listed: E-11853



CSA Certified: 009795

### Applicable Third Party Standards:

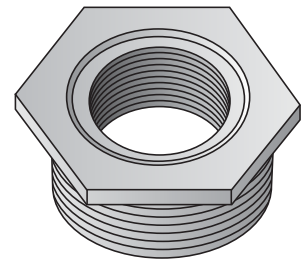
UL Standard: 514B

CSA Standard: C22.2 No. 18

Fed. Spec: W-F-408E

NEMA: FB-1

Trade Size (inches)	Catalog Number	Dimensions in Inches		
		Max. Dim. Across Corners	Thread Length	Flange Thickness
1/2 - 3/8	320-R	1 1/8	1/2	3/32
3/4 - 1/2	321-R	1 1/16	5/8	3/16
1 - 3/4	322-R	1 5/8	3/4	3/16
1 - 1/2	323-R	1 5/8	1 1/16	5/32
1 1/4 - 1/2	324-R	1 15/16	3/4	3/16
1 1/4 - 3/4	325-R	1 15/16	3/4	3/16
1 1/4 - 1	326-R	1 15/16	3/4	3/16
1 1/2 - 1 1/4	327-R	2 3/8	15/16	3/16
1 1/2 - 1	328-R	2 3/8	15/16	3/16
1 1/2 - 3/4	329-R	2 3/8	15/16	3/16
1 1/2 - 1/2	330-R	2 3/8	15/16	3/16
2 - 1 1/2	331-R	2 3/4	15/16	3/16
2 - 1 1/4	332-R	2 3/4	15/16	3/16
2 - 1	333-R	2 3/4	15/16	3/16
2 - 3/4	334-R	2 3/4	15/16	3/16
2 - 1/2	335-R	2 3/4	15/16	3/16
2 1/2 - 2	336-R	3 1/4	15/16	7/16
2 1/2 - 1 1/2	337-R	3 1/4	15/16	7/16
2 1/2 - 1	339-R	3 1/4	15/16	7/16
3 - 1 1/2	340-R	3 15/16	1 1/16	1/2
3 - 2	341-R	3 15/16	1 1/8	1/2
3 - 2 1/2	342-R	3 15/16	1 1/16	1/2
3 1/2 - 3	349-R	4 7/16	1 1/2	1/2
3 1/2 - 2 1/2	350-R	4 7/16	1 1/2	1/2
4 - 2 1/2	355-R	5 1/8	1 7/16	1/2
4 - 3	356-R	5 3/8	1 1/4	1/2
4 - 3 1/2	357-R	5 3/8	1 1/4	1/2



Type 300R

## Type 7

### Bushed Conduit Nipples

#### Use:

Use through knockout to connect box to conduit coupling. Use with a locknut to connect two boxes side by side or back to back. Use with a locknut to connect fixture housings in continuous runs.

#### Features:

- Available with Insulated Throat.
- With rigid conduit threads (NPS)

#### Material/Finish:

Malleable Iron/Zinc Electroplated

#### Optional Finish:

For additional corrosion protection, specify Mechanically Galvanized  
Contact your local representative for pricing and availability.

#### Third Party Certification:



UL Listed: E-11853



CSA Certified: 009795

Trade Size (inches)	Catalog Number	Insulated Throat Catalog Number	Dimensions in Inches		
			Max. Dia. Across Corners	Thread Length	Flange Thickness
3/8	7-38	---	7/8	1/2	1/8
1/2	7-50	7-50T	1 1/8	1/2	3/16
3/4	7-75	7-75T	1 1/4	3/8	3/16
1	7-100	7-100T	1 3/4	5/8	1/4
1 1/4	7-125	7-125T	2 1/8	7/8	1/4
1 1/2	7-150	7-150T	2 1/2	1	5/16
2	7-200	7-200T	3	1 1/8	3/16
2 1/2	7-250	7-250T	3 3/8	1 1/4	3/8
3	7-300	7-300T	4 1/2	1 1/4	3/8
3 1/2	7-350	7-350T	5 1/8	1 3/8	3/8
4	7-400*	7-400T*	5 1/4	1 1/4	7/16
5	7-500*	7-500T*	6 3/8	1 1/4	1/2
6	7-600*	7-600T*	7 3/8	1 3/8	1/2

\*Not CSA Certified

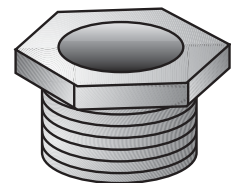
#### Applicable Third Party Standards:

UL Standard: 514B

CSA Standard: C22.2 No. 18

Fed. Spec./CID: A-A-50553

ANSI/NEMA: FB-1



Type 7