

WEATHERPROOF PUSH BUTTONS

HIGH QUALITY SOLID CAST BRASS



TA1786B
WITHOUT BACKPLATE

APPLICATIONS

For outdoor use to activate low voltage bells, buzzers, horns or any other audible signal. Ideal for factory doors, receiving departments, small office buildings, limited access retail stores and private homes.

FEATURES

- Solid cast brass construction including brass mounting screws
- Weatherproof design
- Internal diaphragm protects the contact springs
- Standard mounting holes for universal replacement
- TA1786CB includes threaded backplate for 1/2" conduit

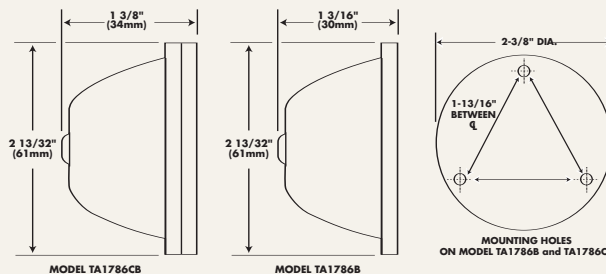
CATALOG NO	UPC CODE	MODEL
TA1786B	96090	WITHOUT CONDUIT BACKPLATE
TA1786CB	96091	WITH CONDUIT BACKPLATE

SPECIFICATIONS

CONTACT RATINGS:

- 4 amps AC/DC @ 12V
 - 4 amps AC, 2 amps DC @ 24V
 - 2 amps AC, 1 amp DC @ 48V
- MOMENTARY CONTACTS, N.O.

DIMENSIONS



REMOTE CONTROL ELECTRIC DOOR OPENERS

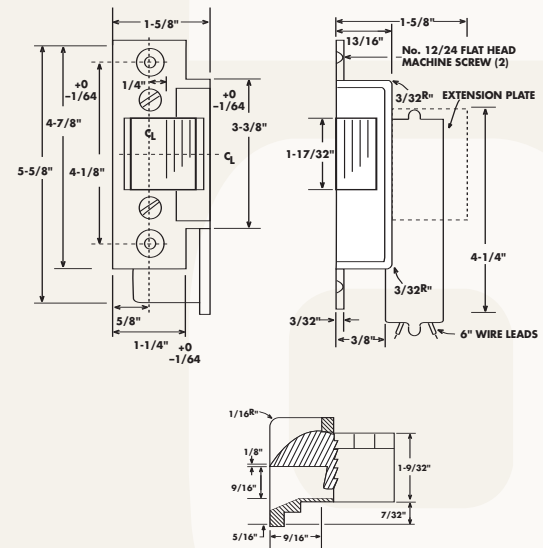


MORTISE TYPE – ANSI STANDARDS FOR OUTSIDE DOORS

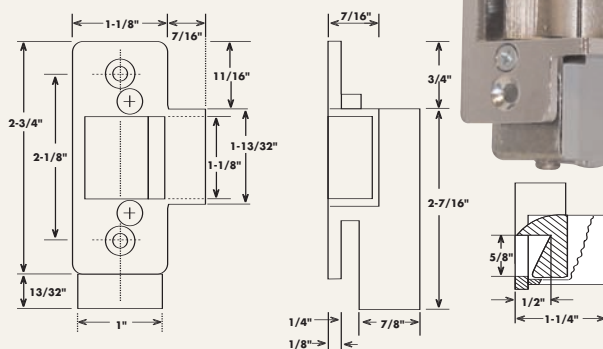
Heavy duty type for locks with dead locking latch bolt up to 1/16" throw. NORMALLY LOCKED. Reversible for right or left hand metal door. 6" wire leads. For AC, use TA592 or TA599 transformer.

CATALOG NO	UPC CODE	FINISH	VOLTS	AMPS
TA150	96990	BRASS MORTISE	24VAC/VDC	.21
TA151	96991	CHROME MORTISE	24VAC/VDC	.21

DIMENSIONS



DIMENSIONS



ANSI CUTOUT SPECIFICATIONS A 115.3 FOR KEY & KNOB LATCHSETS OF OUTSIDE DOORS

Tucks in metal door jambs 1 1/2" and over. Only side jamb modification is required. High intensity conical spring/mini coil. NORMALLY LOCKED.

For AC, use TA591 or TA592 transformer.

CATALOG NO	UPC CODE	FINISH	RATING
TA180	96992	SATIN BRASS	10-16VAC
TA181	96994	SATIN CHROME	10-16VAC