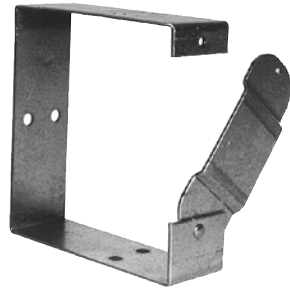
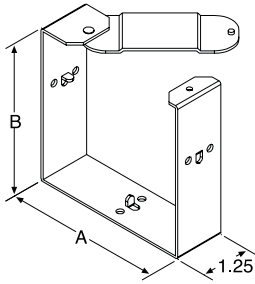


Wireway Fittings

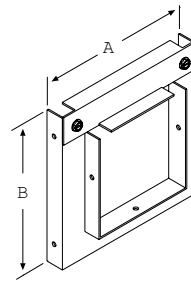
For use with GSC1 and GHC1 wireway



GC | Connectors*

A connector is required at each wireway joint (except at telescopic fittings, ends or reducers). The swing portion allows for easy lay-in wiring.

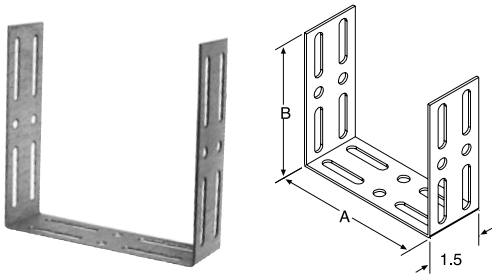
| Catalog Number | Product Family | UPC # (7-84572) | Weight (lbs) | Std. Pkg. | Size |
|----------------|----------------|-----------------|--------------|-----------|-----------|
| 22GC | GFIT | 26412 | 0.3 | 12 | 2.5 x 2.5 |
| 44GC | GFIT | 10674 | 0.5 | 12 | 4 x 4 |
| 66GC | GFIT | 10837 | 0.6 | 12 | 6 x 6 |
| 88GC | GFIT | 10977 | 0.8 | 12 | 8 x 8 |
| 1010GC | GFIT | 10047 | 1 | 12 | 10 x 10 |
| 1212GC | GFIT | 10160 | 1.44 | 12 | 12 x 12 |



GR | Reducers*

Reduces one size wireway to a smaller size wireway. The inner opening is centered to keep the two wireway sizes relative to each other.

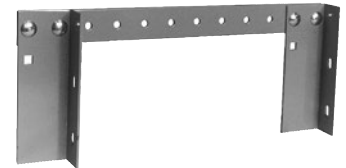
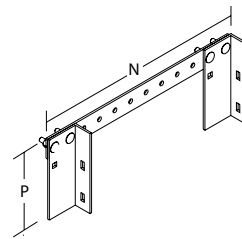
| Catalog Number | Product Family | UPC # (7-84572) | Weight (lbs) | Std. Pkg. | Size |
|----------------|----------------|-----------------|--------------|-----------|-----------------|
| 2244GR | GFIT | 26410 | 3 | 4 | 2.5 x 2.5-4 x 4 |
| 4466GR | GFIT | 10668 | 4 | 4 | 4 x 4-6 x 6 |
| 6688GR | GFIT | 10833 | 6 | 4 | 6 x 6-8 x 8 |
| 881010GR | GFIT | 15669 | 10 | 4 | 8 x 8-10 x 10 |
| 881212GR | GFIT | 32359 | 11 | 4 | 8 x 8-12 x 12 |
| 10101212GR | GFIT | 15648 | 12 | 4 | 10 x 10-12 x 12 |



GCU | Universal Connectors*

Universal Connectors can be used to connect a Milbank wireway to another brand of wireway.

| Catalog Number | Product Family | UPC # (7-84572) | Weight (lbs) | Std. Pkg. | Size |
|----------------|----------------|-----------------|--------------|-----------|-----------|
| 22GCU | GFIT | 26425 | 0.3 | 12 | 2.5 x 2.5 |
| 44GCU | GFIT | 10675 | 0.5 | 12 | 4 x 4 |
| 66GCU | GFIT | 10838 | 0.6 | 12 | 6 x 6 |
| 88GCU | GFIT | 16255 | 0.8 | 12 | 8 x 8 |
| 1010GCU | GFIT | 18917 | 1.2 | 12 | 10 x 10 |
| 1212GCU | GFIT | 18996 | 1.7 | 12 | 12 x 12 |



GH | Hangers*

This adjustable hanger is used to support a wireway run and is placed at 5 foot intervals.

| Catalog Number | Product Family | UPC # (7-84572) | Weight (lbs) | Std. Pkg. | Size |
|----------------|----------------|-----------------|--------------|-----------|-----------|
| 22GH | GFIT | 26936 | 1 | 6 | 2.5 x 2.5 |
| 44GH | GFIT | 10685 | 1.5 | 6 | 4 x 4 |
| 44GH-NP | GFIT | 21072 | 1.5 | 6 | 4 x 4 |
| 66GH | GFIT | 10848 | 2 | 6 | 6 x 6 |
| 66GH-NP | GFIT | 21073 | 2 | 6 | 6 x 6 |
| 88GH | GFIT | 10987 | 3 | 6 | 8 x 8 |
| 1010GH | GFIT | 10052 | 7 | 6 | 10 x 10 |
| 1212GH | GFIT | 10165 | 7 | 6 | 12 x 12 |



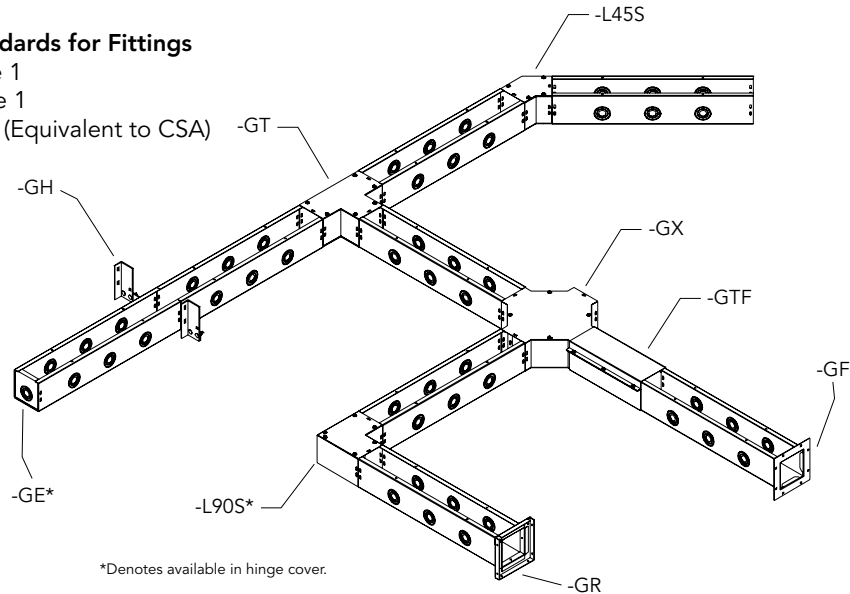
Utility requirements for this equipment may vary. Always consult the serving utility for their requirements before ordering or installing equipment.

Wireway Fittings

For use with GSC1 and GHC1 wireway

Industry Standards for Fittings

- NEMA Type 1
- UL 870 Type 1
- CUL Type 1 (Equivalent to CSA)



*Denotes available in hinge cover.

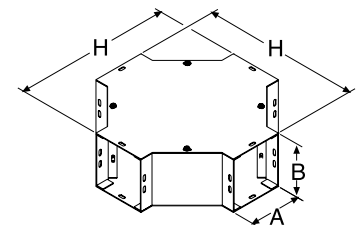
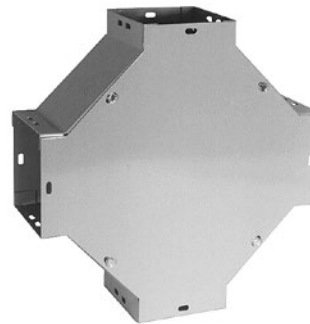
Dimensions for product drawings on pages 70–75

| A x B Inches (mm) | E | F | G | H | J | K | N | P | V | U |
|------------------------------|----------------|----------------|----------------|----------------|---------------|---------------|----------------|----------------|----------------|----------------|
| 3.00 x 3.00 (76 x 76) | 5.06 (129) | 5.06 (129) | 6.06 (154) | 11.25 (286) | 2.58 (66) | 3.20 (81) | 11.00 (279) | 4.63 (118) | 9.00 (229) | 4.62 (117) |
| 4.00 x 4.00 (102 x 102) | 6.06 (154) | 6.06 (154) | 7.06 (179) | 12.25 (311) | 2.80 (71) | 3.63 (92) | 13.25 (337) | 13.25 (337) | 10.00 (254) | 5.13 (130) |
| 4.00 x 6.00 (102 x 152) | 6.06 (154) | 8.06 (205) | 8.00 (203) | — | — | — | — | — | 12.00 (305) | 5.06 (129) |
| 6.00 x 6.00 (152 x 152) | 8.06 (205) | 8.06 (205) | 10.00 (254) | 14.25 (362) | 3.21 (82) | 4.45 (113) | 17.75 (451) | 7.63 (194) | 14.00 (356) | 7.06 (179) |
| 8.00 x 8.00 (203 x 203) | 10.06 (306) | 10.06 (306) | 12.00 (305) | 16.25 (413) | 3.62 (92) | 5.28 (134) | 22.25 (565) | 9.63 (245) | 16.00 (406) | 8.06 (205) |
| 10.00 x 10.00 (254 x 254) | 12.06 (306) | 12.06 (306) | 14.00 (356) | 18.25 (464) | 4.04 (103) | 6.11 (155) | 25.63 (651) | 11.63 (295) | 18.00 (457) | 9.06 (230) |
| 12.00 x 12.00 (305 x 305) | 14.06 (357) | 14.06 (357) | 16.00 (406) | 20.25 (514) | 4.42 (112) | 6.91 (176) | 30.13 (765) | 13.63 (346) | 20.00 (508) | 10.06 (256) |

GX | Crosses*

The cross fitting is for connecting 4 merging wireway runs from 2 different directions.

| Catalog Number | Product Family | UPC # (7-84572) | Weight (lbs) | Std. Pkg. | Size |
|----------------|----------------|-----------------|--------------|-----------|-----------|
| 22GX | GFIT | 26469 | 4.3 | 1 | 2.5 x 2.5 |
| 22GX-NP | GFIT | 26470 | 4.3 | 1 | 2.5 x 2.5 |
| 44GX | GFIT | 10688 | 6.3 | 1 | 4 x 4 |
| 66GX | GFIT | 10851 | 8.3 | 1 | 6 x 6 |
| 88GX | GFIT | 10990 | 13.3 | 1 | 8 x 8 |
| 1010GX | GFIT | 17214 | 14 | 1 | 10 x 10 |
| 1212GX | GFIT | 17128 | 15 | 1 | 12 x 12 |



Utility requirements for this equipment may vary. Always consult the serving utility for their requirements before ordering or installing equipment.