

CP3B “IR” Series

Irrigation Control Pedestals

1Ø 3 wire 120/240 or 208Y/120 volt

Typical application: Metered Power Pedestal for Irrigation Systems

The Milbank “IR” series Commercial Pedestals are designed to provide a weather and vandal resistant metered enclosure for irrigation controllers. Breakers and a GFI duplex receptacle are provided to power the irrigation controllers supplied by others. A plywood backboard is mounted behind the deadfront door for mounting the irrigation controller. A large plan pocket is mounted inside the customer section door to hold plans and specifications. Light green powder coated steel or stainless steel pedestals are normally in stock.



Features:

These units include everything required for remote site service:

- NEMA 3R construction
- 2 each 20 amp single pole circuit breakers: one breaker for standard 20 amp GFCI receptacle and one breaker for irrigation control circuit
- Large plywood back panel for mounting irrigation controller
- All units feature 200 amp meter socket with optional field-installable fifth terminal kit available
- 10K ampere interrupting capacity (AIC) standard
- Optional mounting base can be embedded in concrete for fast, easy installation
- Separate sealable and lockable utility termination section
- Separate sealable and lockable metering section with the option of

EITHER:

- Milbank ring-type socket with test / bypass blocks (conforms to EUSERC 308)

OR

- Milbank heavy duty ringless socket with lever bypass

STOCKED PEDESTALS*	OPTIONAL FIFTH** TERMINAL KIT	EXTERIOR CABINET	METER SOCKET TYPE
CP3B111IRASP	105J	Steel, Light Green	Ring type meter socket with test / bypass blocks
CP3B111IRASS	105J	Stainless Steel	Ring type meter socket with test / bypass blocks
CP3B511IRASP	K3865	Steel, Light Green	Ringless heavy duty meter socket with lever bypass

*NOTE: Chart shows standard, stocked items. Other options and features are available. Contact factory for options details and availability.

*See page E2 for options (accessories) details.

Utility requirements for this equipment may vary. Always consult the serving utility for their requirements before ordering or installing equipment in this catalog.



INTERCHANGEABLE UNIT HUBS



LARGE "R" OPENING (HEAVY DUTY)

SUFFIX	SIZE	MILBANK NO.
F	3"	A8110
G	3½"	A8111
H	4"	A8112

SMALL "RL" OPENING (STANDARD)

SUFFIX	SIZE	MILBANK NO.
WL	1"	A7514
YL	1¼"	A7515
ZL	1½"	A7516
DL	2"	A7517
EL	2½"	A7518



HUB ADAPTER PLATE
(Converts 4" opening to 2½")
S8324



REMOVABLE HUB CLOSING PLATE

DESCRIPTION	SUFFIX	CAT. #
STANDARD (for -RL opening)	-XL	A7551
LARGE (for -R opening)	-X	A9064

ANTI-INVERSION CLIP



K4802

BYPASS LINK

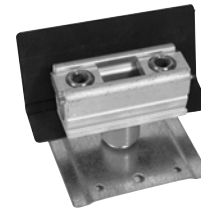


K8180

(Bypass links sold in pairs)

ISOLATED NEUTRAL KIT

K1047



CONNECTOR KITS



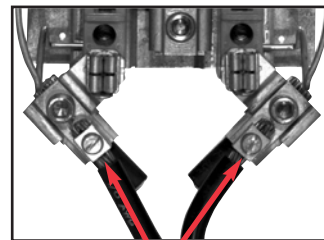
SINGLE

For use with 3/8"-16 stud type units only

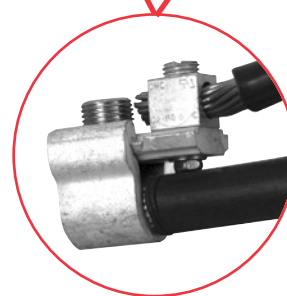


TWIN

LOAD TAP CONNECTORS (3 per set)



Replaces the **load side** slide-in nut assembly on Milbank 200 amp sockets. Allows for a 100 amp tap location in addition to the #6-350 kcmil load-side connector. **K5022** Includes Safety Barrier Extensions— for applications over 300 VAC.



K4977-INT

INTERNAL HEX

K5022-INT

INTERNAL HEX

SUFFIX	CATALOG #	(3 per set) – 1 Ø
K1	K1539	6-350 kcmil
K3	K1540	4-600 kcmil or (2) 1/0-250 kcmil
K3L	K1540L	4-600 kcmil or (2) 1/0-250 kcmil Non-rotating
SUFFIX	CATALOG #	(4 per set) – 3 Ø
K5	K3082	6-350 kcmil
K7	K3441	4-600 kcmil or (2) 1/0-250 kcmil

SUFFIX	CATALOG #	(3 per set) – 1 Ø
K2	K1350	6-350 kcmil
K2L	K1350L	6-350 kcmil Non-rotating
K4	K1541	4-600 kcmil
SUFFIX	CATALOG #	(4 per set) – 3 Ø
K6	K3442	6-350 kcmil
K8	K3083	4-600 kcmil

Utility requirements for this equipment may vary. Always consult the serving utility for their requirements before ordering or installing equipment in this catalog.