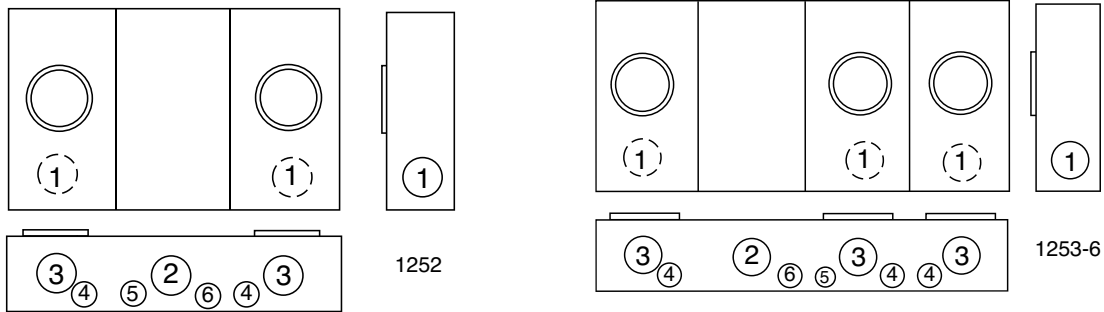




U1252-X-K1

CENTER WIREWAY



200 AMP / POSITION-4 TERMINAL-RINGLESS-NO BYPASS-1Ø3W

AMPS	NO. OF POS.	CATALOG NUMBER	HUB	CONNECTOR CU/AL		BY-PASS	DIMENSIONS			CONCENTRIC K.O.'S					
				LINE	LOAD		D"	W"	H"	1	2	3	4	5	6
200	2	U1252-X-K1	C.P.	#6-350 kcmil	#6-350 kcmil	NO	5 ¹ / ₈	26 ¹ / ₂	14	2 ¹ / ₂	3	2 ¹ / ₂	1 ¹ / ₂	1 ¹ / ₄	1
200	3	U1253-X-K3	C.P.	#4-600 kcmil	#6-350 kcmil	NO	5 ¹ / ₈	34 ³ / ₄	14	2 ¹ / ₂	3	2 ¹ / ₂	1 ¹ / ₂	1 ¹ / ₄	1
200	4	U1254-X-K3	C.P.	#4-600 kcmil	#6-350 kcmil	NO	5 ¹ / ₈	42 ⁷ / ₈	16	2 ¹ / ₂	3	2 ¹ / ₂	1 ¹ / ₂	1 ¹ / ₄	1
200	5	U1255-X-K4	C.P.	(2) #2-600 kcmil	#6-350 kcmil	NO	5 ¹ / ₈	54 ⁷ / ₈	16	2 ¹ / ₂	3	2 ¹ / ₂	1 ¹ / ₂	1 ¹ / ₄	1
200	6	U1256-X-K4	C.P.	(2) #2-600 kcmil	#6-350 kcmil	NO	5 ¹ / ₈	63 ¹ / ₁₆	18	2 ¹ / ₂	3	2 ¹ / ₂	1 ¹ / ₂	1 ¹ / ₄	1

HUB: For proper hub selection refer to the hub suffix chart in Accessories.

FIFTH TERMINAL: For field mounted fifth terminal order **K5T** to fit into square opening at the 9 o'clock position.

CONNECTORS: Extruded aluminum connectors are tin plated.

BUSSING: 5/16" x 1" aluminum bussing is supplied in the **U1252** unit. 3/8" x 1" aluminum bussing is supplied in the **U1253-56** units.

OVERHEAD SERVICE: Extension kits for 4, 5 & 6 gang sockets available. Consult factory.

Utility requirements for this equipment may vary. Always consult the serving utility for their requirements before ordering or installing equipment in this catalog.

