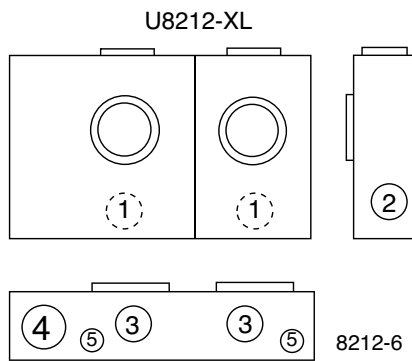
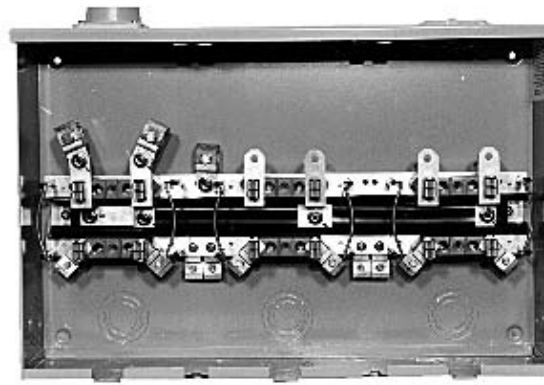
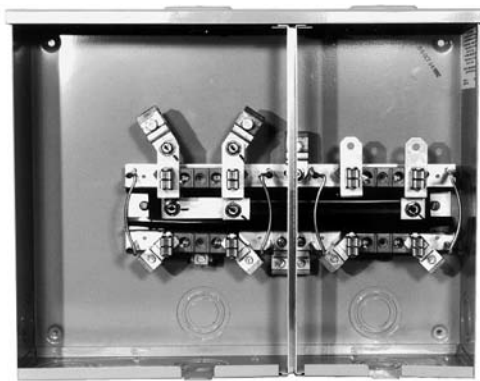
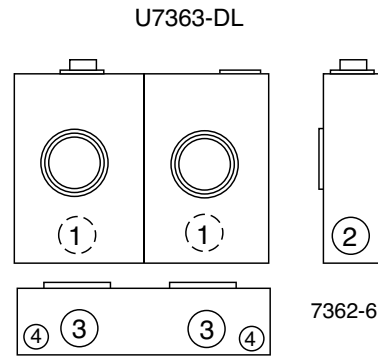


100 AMP/POSITION-4 & 5 TERMINAL-HORIZONTAL GANGS-RINGLESS-300 VAC



SIDE WIREWAY



FOR OVERHEAD SERVICE ENTRANCE USE

100 AMP / POSITION- 4 TERMINAL-RINGLESS

NO. OF POS.	CATALOG NUMBER	HUB	CONNECTOR CU/AL		BY-PASS	DIMENSIONS			CONCENTRIC K.O.'S					
			LINE	LOAD		D"	W"	H"	1	2	3	4	5	6
2	U8212-XL	C.P.	#2-350 kcmil	#6-2/0	NO	4 1/2	20 5/16	16	2	2	2	2 1/2	1/4, 1/2	-
3	U8213-XL	C.P.	#2-350 kcmil	#6-2/0	NO	4 1/2	28 1/2	16	2	2	2	2 1/2	1/4, 1/2	-
4	U8214-XL	C.P.	#2-350 kcmil	#6-2/0	NO	4 1/2	40 11/16	16	2	2	2	2 1/2	1/4, 1/2	-
5	U8215-XL	C.P.	#2-350 kcmil	#6-2/0	NO	4 1/2	48 7/8	16	2	2	2	2 1/2	1/4, 1/2	-
6	U8216-XL	C.P.	#2-350 kcmil	#6-2/0	NO	4 1/2	57 1/16	16	2	2	2	2 1/2	1/4, 1/2	-
2	U7362-DL	2"	#2-350 kcmil	#6-2/0	NO	4 1/2	16 5/16	16	2	2	2	1/4, 1/2	-	-
3	U7363-DL	2"	#2-350 kcmil	#6-2/0	NO	4 1/2	24 1/2	16	2	2	2	1/4, 1/2	-	-
4	U7364-DL	2"	#2-350 kcmil	#6-2/0	NO	4 1/2	32 11/16	16	2	2	2	1/4, 1/2	-	-
5	U7365-DL	2"	#2-350 kcmil	#6-2/0	NO	4 1/2	40 7/8	16	2	2	2	1/4, 1/2	-	-
6	U7366-DL	2"	#2-350 kcmil	#6-2/0	NO	4 1/2	49 1/16	16	2	2	2	1/4, 1/2	-	-

HUB: For proper hub selection refer to the hub suffix chart on the accessory page. Hub opening is supplied at each end. Extra opening is closed with a closing plate.

FIFTH TERMINAL: For field installed fifth terminal in 9 o'clock position, order **K1815** for each meter position. Refer to accessory page.

CONNECTORS: Extruded aluminum connectors are tin plated.

BUSSING: Bussing is 5/16" x 1" aluminum.

Utility requirements for this equipment may vary. Always consult the serving utility for their requirements before ordering or installing equipment in this catalog.



MULTIPLE POSITION METERING