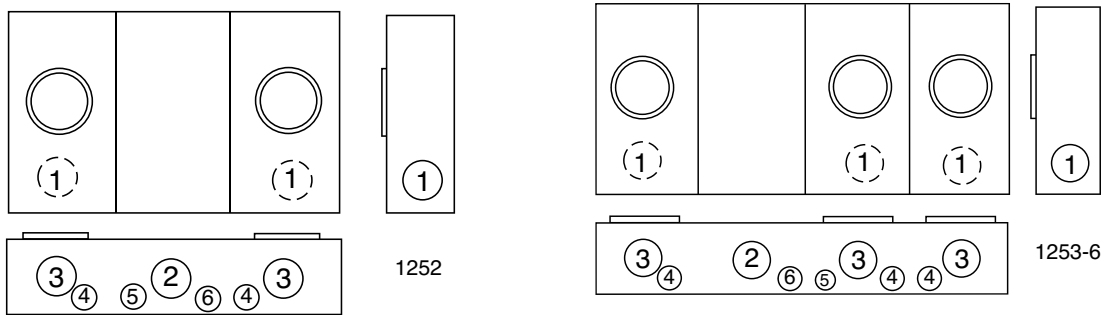




U1252-X-K1

**CENTER WIREWAY**



**200 AMP / POSITION-4 TERMINAL-RINGLESS-NO BYPASS-1Ø3W**

AMPS	NO. OF POS.	CATALOG NUMBER	HUB	CONNECTOR CU/AL		BY-PASS	DIMENSIONS			CONCENTRIC K.O.'S					
				LINE	LOAD		D"	W"	H"	1	2	3	4	5	6
200	2	U1252-X-K1	C.P.	#6-350 kcmil	#6-350 kcmil	NO	5 <sup>1</sup> / <sub>8</sub>	26 <sup>1</sup> / <sub>2</sub>	14	2 <sup>1</sup> / <sub>2</sub>	3	2 <sup>1</sup> / <sub>2</sub>	1 <sup>1</sup> / <sub>2</sub>	1 <sup>1</sup> / <sub>4</sub>	1
200	3	U1253-X-K3	C.P.	#4-600 kcmil	#6-350 kcmil	NO	5 <sup>1</sup> / <sub>8</sub>	34 <sup>3</sup> / <sub>4</sub>	14	2 <sup>1</sup> / <sub>2</sub>	3	2 <sup>1</sup> / <sub>2</sub>	1 <sup>1</sup> / <sub>2</sub>	1 <sup>1</sup> / <sub>4</sub>	1
200	4	U1254-X-K3	C.P.	#4-600 kcmil	#6-350 kcmil	NO	5 <sup>1</sup> / <sub>8</sub>	42 <sup>7</sup> / <sub>8</sub>	16	2 <sup>1</sup> / <sub>2</sub>	3	2 <sup>1</sup> / <sub>2</sub>	1 <sup>1</sup> / <sub>2</sub>	1 <sup>1</sup> / <sub>4</sub>	1
200	5	U1255-X-K4	C.P.	(2) #2-600 kcmil	#6-350 kcmil	NO	5 <sup>1</sup> / <sub>8</sub>	54 <sup>7</sup> / <sub>8</sub>	16	2 <sup>1</sup> / <sub>2</sub>	3	2 <sup>1</sup> / <sub>2</sub>	1 <sup>1</sup> / <sub>2</sub>	1 <sup>1</sup> / <sub>4</sub>	1
200	6	U1256-X-K4	C.P.	(2) #2-600 kcmil	#6-350 kcmil	NO	5 <sup>1</sup> / <sub>8</sub>	63 <sup>1</sup> / <sub>16</sub>	18	2 <sup>1</sup> / <sub>2</sub>	3	2 <sup>1</sup> / <sub>2</sub>	1 <sup>1</sup> / <sub>2</sub>	1 <sup>1</sup> / <sub>4</sub>	1

**HUB:** For proper hub selection refer to the hub suffix chart in Accessories.

**FIFTH TERMINAL:** For field mounted fifth terminal order **K5T** to fit into square opening at the 9 o'clock position.

**CONNECTORS:** Extruded aluminum connectors are tin plated.

**BUSSING:** 5/16" x 1" aluminum bussing is supplied in the **U1252** unit. 3/8" x 1" aluminum bussing is supplied in the **U1253-56** units.

**OVERHEAD SERVICE:** Extension kits for 4, 5 & 6 gang sockets available. Consult factory.

Utility requirements for this equipment may vary. Always consult the serving utility for their requirements before ordering or installing equipment in this catalog.

