

CH - CA and MH - MA enclosures

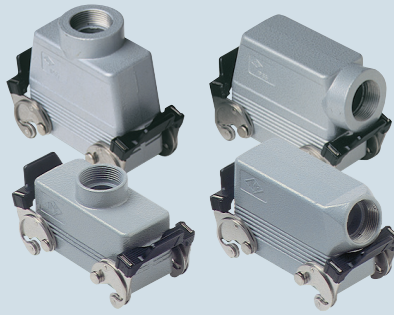
size "77.27" standard version



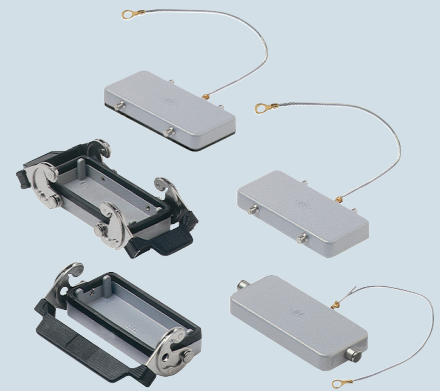
inserts:		page
CD	40 poles + ⊕	49
CDD	72 poles + ⊕	62
CQE	32 poles + ⊕	82
CSH	16 poles + ⊕	90
CCE	16 poles + ⊕	98
CNE, CSE, JCNE, JCSE	16 poles + ⊕	99 and 108
CSS	16 poles + ⊕	120
CMSE	6+2 (aux) poles + ⊕	137
CMCE	6+2 (aux) poles + ⊕	136
CP	6 poles + ⊕	149
CX	6/36 and 12/2 poles + ⊕	152+153
CX	4/0 and 4/2 poles + ⊕	154
MIXO	4 modules	156+195

insert centre distance:
77.5 x 27 mm

hoods with 2 levers



covers



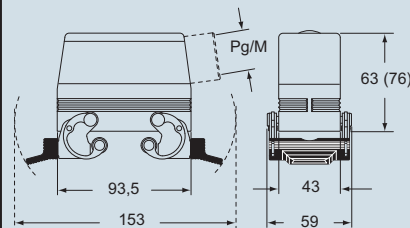
description	part no.	entry Pg	part no.	entry M	part no.
with levers, side entry ¹⁾	CHO 16 X	21	MHO 16 X25	25	
with levers, side entry ¹⁾			MHO 16 X32	32	
with levers, side entry, high construction ¹⁾	CAO 16 X	21	MAO 16 X32	32	
with levers, side entry, high construction ¹⁾	CAO 16 X29	29	MAO 16 X40	40	
with levers, top entry ¹⁾	CHV 16 X	21	MHV 16 X25	25	
with levers, top entry ¹⁾			MHV 16 X32	32	
with levers, top entry, high construction ¹⁾	CAV 16 X	21	MAV 16 X32	32	
with levers, top entry, high construction ¹⁾	CAV 16 X29	29	MAV 16 X40	40	
with 4 pegs (for enclosures with 2 levers with gasket) with 4 pegs and gasket (for enclosures with 2 levers) ²⁾ with 2 pegs (for enclosures with 1 lever with gasket)					CHC 16 CHC 16 C CHC 16 L
with 2 levers (for hoods with 4 pegs) with 1 lever (for hoods with 2 pegs)					CHC 16 G CHC 16 LG

¹⁾ may be combined with enclosures:
- CHI/CHP/CAP 16 CS/CP/C
- MHP/MAP 16 CS/CP

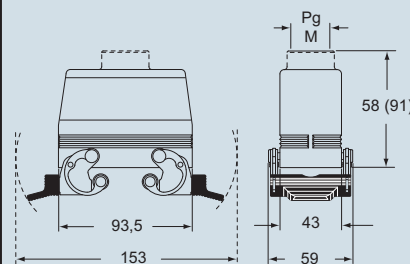
²⁾ may be combined with enclosures:
- CHO/CAO 16 X and CHV/CAV 16 X
- MHO/MAO 16 X and MHV/MAV 16 X

dimensions in mm

CHO X (CAO X) and MHO X (MAO X)



CHV X (CAV X) and MHV X (MAV X)



dimensions in mm

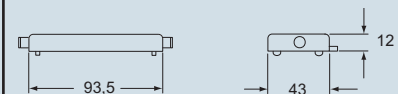
CHC



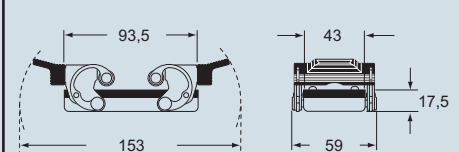
CHC C



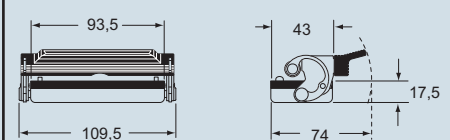
CHC L



CHC G



CHC LG



CAVUS Type 4/4X/12



dimensions shown are not binding and may be changed without notice

C-TYPE - size 77.27