

DN9c



DN9c Multipin – 20A Plugs & Receptacles

Ratings

- Voltage**
50 VAC or 480 VAC Max / 130 VDC+
* For DC order 480V model.
Not CSA listed.
- Amperage Rating**
20A Current Interrupting
- Horsepower Ratings**

| | | |
|------|----|--------|
| 120V | 1Ø | 1/3 hp |
| 240V | 1Ø | 1 hp |
| 208V | 3Ø | 2 hp |
| 240V | 3Ø | 3 hp |
| 480V | 3Ø | 5 hp |
- Environmental Ratings**
IP54 / IP55
- Temperature Range**
Min -40°F / Max 140°F
See pg 228 for temps below -15°F.
- Wiring Capacity**
Min 16 AWG Max 10 AWG
- Listings**
CSA, CE*
* Contact Customer Service for CE rated devices.

For DN9c dimensions, see pgs 97-98

Receptacle (female)



Don't forget to add installation accessories to your order

For international configurations (CE) visit meltric.com/international-catalog or contact customer service at 800.433.7642.

| Voltage | Polarity | Part # Metal |
|---------|----------|--------------|
| 50V | 6P | 17-14060 |
| 50V | 7P | 17-14070 |
| 50V | 8P | 17-14080 |
| 50V | 9P | 17-14090 |
| 480V | 5P+G | 17-14051 |
| 480V | 6P+G | 17-14061 |
| 480V | 7P+G | 17-14071 |
| 480V | 8P+G | 17-14081 |

Inlet (male)



| Voltage | Polarity | Part # Metal |
|---------|----------|--------------|
| 50V | 6P | 17-18060 |
| 50V | 7P | 17-18070 |
| 50V | 8P | 17-18080 |
| 50V | 9P | 17-18090 |
| 480V | 5P+G | 17-18051 |
| 480V | 6P+G | 17-18061 |
| 480V | 7P+G | 17-18071 |
| 480V | 8P+G | 17-18081 |

Main Options



Mushroom Pawl

Padlock Pawl

Self-Ejecting Devices

* Requires straight insertion receptacle or inlet and self-ejecting plug or connector

Receptacle Options

Part

| | |
|-----------------------------------|---------------------|
| Straight Insertion | Recept # - A188 |
| Self-Ejecting Connector Release | Recept # - 348-A188 |
| HP Watertightness (high pressure) | Recept # - HP |
| Mushroom Pawl | Recept # - 375 |
| Locking Mushroom Pawl | Recept # - 845 |
| Padlock Pawl | Recept # - 843 |
| Padlockable Mushroom Pawl | Recept # - 375- 843 |
| Closed Lid Configuration | Recept # - NC |

Inlet Options

Part

| | |
|----------------------------|--------------------|
| Self-Ejecting Plug Release | Inlet # - 338-A188 |
| Straight Insertion | Inlet # - A188 |

DN9c Order Example:

To order Closed Lid Configuration on a receptacle add **-NC** to the part numbers.

DN9c Receptacle 9P=17-14090-**NC**

Appropriate accessory part numbers must also be included on the order.



See pgs 205-214 for detailed information on these options

Installation Accessories

Handles



Not Type 3R

Makes connector closures easier

| NPT | Poly Handle | Metal Handle |
|--------|-------------|--------------|
| 1/2" | 3PH12 | 3H12 |
| 3/4" | 3PH34 | 3H34 |
| 1" | 3PH1 | 3H1 |
| 1 1/4" | 3PH114 | 3H114 |

| Cable Range | Nylon Handle | Neoprene Handle | Poly Handle w/Clamp & Bushing | Poly Handle w/built in Draw Grips |
|---------------|--------------|-----------------|-------------------------------|-----------------------------------|
| .32 - 1.25 | - | - | - | FH311-473 |
| .38 - 1.12 | - | 31-311 | - | - |
| .39 - 1.18 | FH311 | - | - | - |
| .750 - .875 | - | - | 3PM514 | - |
| .875 - 1.000 | - | - | 3PM516 | - |
| 1.000 - 1.125 | - | - | 3PM518 | - |
| 1.125 - 1.250 | - | - | 3PM520 | - |
| 1.250 - 1.375 | - | - | 3PM522 | - |

- Notes:**
- Finger draw plates are recommended for easier connector closure on cord to cord assemblies.
 - For available cord grips, see pgs 171-172.

Angles



| Metal 30° Angle | Metal 70° Angle | Metal Angle FS/FD Box 30° | Metal Straight Adapter |
|-----------------|-----------------|---------------------------|------------------------|
| MA3 | 89-3A027 | MAFS3* | MS3 |

* MAFS3 base measures approximately 4.2" x 2.7". Due to the variation in sizes of FS boxes, please verify that your FS box matches our dimensions, if not call Customer Service for other solutions.

NPT Guidelines

| Cable Range | NPT |
|--------------|--------|
| .312 - .625 | 1/2" |
| .438 - .812 | 3/4" |
| .660 - 1.000 | 1" |
| .875 - 1.375 | 1 1/4" |

NPT sizes are determined by the cable diameter and third party cord grip.

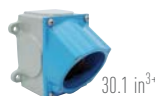
Accessory Spotlight

Receptacle Lockout Pin



A 5/16" lockout pin can be ordered to securely lockout receptacles that include the 'padlockable pawl' option. Alternatively the user can utilize a lock with a 5/16" shank. Locks with smaller shanks will NOT securely lockout a receptacle pawl.

Junction Boxes



30.1 in³⁺

| NPT | Metal Box | Metal Box Metal Angle 30° |
|--------|-----------|---------------------------|
| 1/2" | MB312 | 39-3A053-080-12 |
| 3/4" | MB334 | 39-3A053-080-34 |
| 1" | MB31 | 39-3A053-080-1 |
| 1 1/4" | MB3114 | 39-3A053-080-114 |

+ Interior volume with receptacle installed.

Miscellaneous Accessories



* Set of Two (2)



For Male Devices Only



| Finger Drawplates | Protective Neoprene Cap | Cord Grip with Mesh | Receptacle ⁺ Lockout Pin |
|-------------------|-------------------------|---------------------|-------------------------------------|
| FDP3 | DN16R | see pgs 171-172 | LP-843 |

- * Recommended for cord to cord assembly applications, for easier connector closure.
 + Requires Padlockable Pawl option (-843) on receptacle.

Order Example

A typical order should include an inlet part number, a receptacle part number **AND** the matching handles, angles or other required accessories.



Male Inlet with Handle (Plug)
17-18060 + FH311



Female Receptacle with Angle Adapter
17-14060 + MA3

DN20c



DN20c Multipin – 20A Plugs & Receptacles

Ratings

- Voltage**
50 VAC or 480 VAC Max/130 VDC*
* For DC order 480V model.
Not CSA listed.
- Amperage Rating**
20A/15A Current Interrupting*
* The amperage rating is 15A when more than 12 contacts are used for power circuits (not control).
- Horsepower Ratings**

| | | |
|------|----|--------|
| 120V | 1Ø | 1/6 hp |
| 240V | 1Ø | 1/2 hp |
| 208V | 3Ø | 1 hp |
| 240V | 3Ø | 1 hp |
| 480V | 3Ø | 3 hp |
- Environmental Ratings**
IP54/IP55
- Temperature Range**
Min -40°F/Max 140°F
See pg 228 for temps below -15°F.
- Wiring Capacity**
Min 16 AWG Max 10 AWG
- Listings**
CSA, CE**
** Contact Customer Service for CE rated devices.

For DN20c dimensions, see pgs 97-98

Receptacle (female)



Don't forget to add installation accessories to your order

For international configurations (CE) visit meltric.com/international-catalog or contact customer service at 800.433.7642.

| Voltage | Polarity | Part # Metal |
|---------|----------|--------------|
| 50V | 10P | 17-64100 |
| 50V | 11P | 17-64110 |
| 50V | 12P | 17-64120 |
| 50V | 13P | 17-64130* |
| 50V | 14P | 17-64140* |
| 50V | 15P | 17-64150* |
| 50V | 16P | 17-64160* |
| 50V | 17P | 17-64170* |
| 50V | 18P | 17-64180* |
| 50V | 19P | 17-64190* |
| 50V | 20P | 17-64200* |
| 480V | 9P+G | 17-64091 |
| 480V | 10P+G | 17-64101 |
| 480V | 11P+G | 17-64111 |
| 480V | 12P+G | 17-64121 |
| 480V | 13P+G | 17-64131* |
| 480V | 14P+G | 17-64141* |
| 480V | 15P+G | 17-64151* |
| 480V | 16P+G | 17-64161* |
| 480V | 17P+G | 17-64171* |
| 480V | 18P+G | 17-64181* |
| 480V | 19P+G | 17-64191* |

Inlet (male)



* The amperage rating is 15A when more than 12 contacts are used for power circuits (not control).

| Voltage | Polarity | Part # Metal |
|---------|----------|--------------|
| 50V | 10P | 17-68100 |
| 50V | 11P | 17-68110 |
| 50V | 12P | 17-68120 |
| 50V | 13P | 17-68130* |
| 50V | 14P | 17-68140* |
| 50V | 15P | 17-68150* |
| 50V | 16P | 17-68160* |
| 50V | 17P | 17-68170* |
| 50V | 18P | 17-68180* |
| 50V | 19P | 17-68190* |
| 50V | 20P | 17-68200* |
| 480V | 9P+G | 17-68091 |
| 480V | 10P+G | 17-68101 |
| 480V | 11P+G | 17-68111 |
| 480V | 12P+G | 17-68121 |
| 480V | 13P+G | 17-68131* |
| 480V | 14P+G | 17-68141* |
| 480V | 15P+G | 17-68151* |
| 480V | 16P+G | 17-68161* |
| 480V | 17P+G | 17-68171* |
| 480V | 18P+G | 17-68181* |
| 480V | 19P+G | 17-68191* |

Main Options



Mushroom Pawl



Self-Ejecting Devices

* Requires straight insertion receptacle or inlet and self-ejecting plug or connector



See pgs 205-214 for detailed information on these options

Receptacle Options

Part

| | |
|-----------------------------------|---------------------|
| Straight Insertion | Recept # - A188 |
| Self-Ejecting Connector Release | Recept # - 348-A188 |
| HP Watertightness (high pressure) | Recept # - HP |
| Mushroom Pawl | Recept # - 375 |
| Locking Mushroom Pawl | Recept # - 845 |
| Padlock Pawl | Recept # - 843 |
| Padlockable Mushroom Pawl | Recept # - 375-843 |
| 180° Opening Lid | Recept # - 180 |
| Closed Lid Configuration | Recept # - NC |

Inlet Options

Part

| | |
|----------------------------|--------------------|
| Self-Ejecting Plug Release | Inlet # - 338-A188 |
| Straight Insertion | Inlet # - A188 |

DN20c Order Example:

To order Closed Lid Configuration on a receptacle add **-NC** to the receptacle part numbers.

DN20c Receptacle 19P=17-64190-**NC**

Appropriate accessory part numbers must also be included on the order.

Installation Accessories

Handles



| NPT | Poly Handle | Metal Handle | Cable Range | Santoprene™ Handle | Poly Handle w/Clamp & Bushing |
|--------|-------------|--------------|---------------|--------------------|-------------------------------|
| 3/4" | 9PH34 | 9H34 | .70 - 1.00 | 65-9A013-D25 | - |
| 1" | 9PH1 | 9H1 | 1.00 - 1.375 | 65-9A013-D35 | - |
| 1 1/4" | 9PH114 | 9H114 | 1.250 - 1.375 | - | 9PM622 |
| 1 1/2" | 9PH112 | 9H112 | 1.375 - 1.750 | 65-9A013-D45 | - |
| 2" | 9PH2 | 9H2 | 1.438 - 1.562 | - | 9PM625 |
| | | | 1.562 - 1.688 | - | 9PM627 |
| | | | 1.688 - 1.812 | - | 9PM629 |

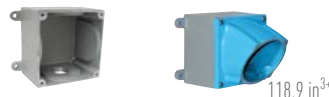
Notes: • For available cord grips, see pgs 171-172.

Angles



| Metal 30° Angle | Metal 70° Angle | Metal Straight Adapter |
|-----------------|-----------------|------------------------|
| MA10 | 89-9A027 | MS10 |

Junction Boxes



| NPT | Metal Box | Metal Box Metal Angle 30° |
|--------|-----------|---------------------------|
| 1 1/4" | MB10114 | 39-9A053-080-114 |
| 1 1/2" | MB10112 | 39-9A053-080-112 |
| 2" | MB102 | 39-9A053-080-2 |
| 2 1/2" | MB10212 | 39-9A053-080-212 |

NPT Guidelines

| Cable Range | NPT |
|---------------|--------|
| .312 - .625 | 1/2" |
| .438 - .812 | 3/4" |
| .660 - 1.000 | 1" |
| .875 - 1.375 | 1 1/4" |
| .890 - 1.812 | 1 1/2" |
| 1.190 - 2.438 | 2" |
| 2.062 - 2.438 | 2 1/2" |

NPT sizes are determined by the cable diameter and third party cord grip.

Miscellaneous Accessories



For Male Devices Only

| Protective Neoprene Cap | Cord Grip with Mesh | Receptacle ⁺ Lockout Pin |
|-------------------------|---------------------|-------------------------------------|
| DN63R | see pgs 171-172 | LP-843 |

⁺ Requires Padlockable Pawl option (-843) on receptacle.

Order Example

A typical order should include an inlet part number, a receptacle part number **AND** the matching handles, angles or other required accessories.



Male Inlet with Handle (Plug)
17-68200 + 65-9A013-D25



Female Receptacle with Angle Adapter
17-64200 + MA10

DN7c



DN7c Multipin – 50-150A Plugs & Receptacles

Ratings

- **Voltage**
480 VAC Max/130 VDC
- **Amperage Rating**
50A Non-Current Interrupting
90A Non-Current Interrupting
150A Non-Current Interrupting
- **Environmental Ratings**
IP54/IP55
- **Temperature Range**
Min -40°F / Max 140°F
See pg 228 for temps below -15°F.
- **Wiring Capacity**
50A Min 14 AWG Max 6 AWG
90A Min 8 AWG Max 2 AWG
150A Min 4 AWG max 2/0 AWG
- **Listings**
Contact Customer Service

For DN7c dimensions, see pgs 97-98

Receptacle (female)



Don't forget to add installation accessories to your order

For international configurations (CE) visit meltric.com/international-catalog or contact customer service at 800.433.7642.

Inlet (male)



| Voltage | Polarity | Amperage | Part # Metal |
|---------|----------|----------|--------------|
| 480V | 6P+G | 50A | 19-34061 |
| 480V | 6P+G | 90A | 19-64061 |
| 480V | 6P+G | 150A | 39-94061 |

| Voltage | Polarity | Amperage | Part # Metal |
|---------|----------|----------|--------------|
| 480V | 6P+G | 50A | 19-38061 |
| 480V | 6P+G | 90A | 19-68061 |
| 480V | 6P+G | 150A | 39-98061 |

Installation Accessories

Order Example

A typical order should include an inlet part number, a receptacle part number **AND** the matching handles, angles or other required accessories.



Male Inlet with Handle (Plug)
19-38061 + 6PH34



Female Receptacle with Angle Adapter
19-34061 + MA6

Handles



| NPT | Poly Handle | | | Metal Handle | | |
|--------|-------------|--------|--------|--------------|--------------|-------|
| | 50A | 90A | 150A | 50A | 90A | 150A |
| 1/2" | 6PH12 | - | - | 6H12 | - | - |
| 3/4" | 6PH34 | 9PH34 | - | 6H34 | 19-6A013-34 | - |
| 1" | 6PH1 | 9PH1 | - | 6H1 | 19-6A013-1 | 2H1 |
| 1 1/4" | 6PH114 | 9PH114 | - | 6H114 | 19-6A013-114 | 2H114 |
| 1 1/2" | 6PH112 | 9PH112 | 2PH112 | 6H112 | 19-6A013-112 | 2H112 |
| 2" | - | 9PH2 | 2PH2 | - | 19-6A013-2 | 2H2 |
| 2 1/2" | - | - | 2PH212 | - | - | 2H212 |

Notes: • For available cord grips, see pgs 171-172.

• For a guideline of NPT sizes based on cable ranges, see DN20c pg 88.

Installation Accessories

Handles



Not Type 3R

IP 66/67

IP 66/67

| Cable Range | Nylon Handle 50A | Neoprene Handle | Santoprene™ Handle 90A | Santoprene™ Handle 150A | Poly Handle w/Clamp & Bushing 50A | Poly Handle w/Clamp & Bushing 90A |
|---------------|------------------|-----------------|------------------------|-------------------------|-----------------------------------|-----------------------------------|
| .50 - 1.25 | - | 31-611 (50A) | - | - | - | - |
| .51 - 1.38 | FH611 | - | - | - | - | - |
| .70 - 1.00 | - | - | 65-9A013-D25 | - | - | - |
| 1.00 - 1.375 | - | - | 65-9A013-D35 | 35-2A013-D35 | - | - |
| 1.250 - 1.375 | - | - | - | - | 6PM622 | 9PM622 |
| 1.375 - 1.750 | - | - | 65-9A013-D45 | 35-2A013-D45 | - | - |
| 1.438 - 1.562 | - | - | - | - | 6PM625 | 9PM625 |
| 1.562 - 1.688 | - | - | - | - | 6PM627 | 9PM627 |
| 1.688 - 1.812 | - | - | - | - | 6PM629 | 9PM629 |
| 1.750 - 1.900 | - | - | - | 35-2A013-D49 | - | - |

Notes: • Finger draw plates are recommended for easier connector closure on cord to cord assemblies.

Angles

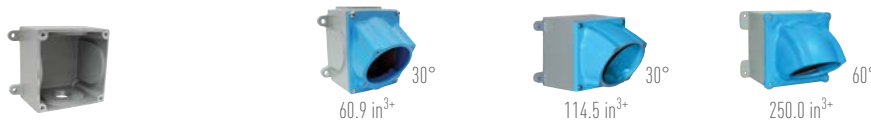


MA10 shown

| Amp | Metal 30° Angle | Metal 60° Angle | Metal 70° Angle | Metal Angle + Oversized 30° | Metal Angle + Oversized 45° | Metal Straight Adapter | Metal Lateral Angle 30° |
|------|-----------------|-----------------|-----------------|-----------------------------|-----------------------------|------------------------|-------------------------|
| 50A | MA6 | - | 89-6A027 | MA660 | - | MS6 | MAB6 |
| 90A | MA10 | - | 89-9A027 | MA110 | - | MS10 | - |
| 150A | - | MA20 | - | - | MA220 | MS20 | - |

+ Mounts on oversize box only. Use MB22xxx box size pg 50.

Junction Boxes



60.9 in³⁺

114.5 in³⁺

250.0 in³⁺

| NPT | Metal Box | | | Metal Box with Metal Angle | | |
|-----------|-----------|---------|---------|----------------------------|------------------|-------------------|
| | 50A | 90A | 150A | 50A | 90A | 150A |
| 1" | MB61 | - | - | 39-6A053-080-1 | - | - |
| 1 1/4" | MB6114 | MB10114 | - | 39-6A053-080-114 | 39-9A053-080-114 | - |
| 1 1/2" | MB6112 | MB10112 | MB20112 | 39-6A053-080-112 | 39-9A053-080-112 | 39-2A053-080-112 |
| 2" | MB62 | MB102 | MB202 | 39-6A053-080-2 | 39-9A053-080-2 | 39-2A053-080-2 |
| 2 1/2" | - | MB10212 | MB20212 | - | 39-9A053-080-212 | 39-2A053-080-212 |
| Oversized | - | - | MB22212 | - | - | 39-2A053-080-2210 |

+ Interior volume with receptacle installed.

Miscellaneous Accessories



* Set of Two (2)

For Male Devices Only

| Amp | Finger Drawplates | Protective Neoprene Cap |
|------|-------------------|-------------------------|
| 50A | FDP6 | - |
| 90A | - | DN63R |
| 150A | - | 31-2A126 |

* Recommended for cord to cord assembly applications, for easier connector closure.