

## SELF-DRIVEN LIGHT BAR CONNECTION ACCESSORIES



MLSDLBCBOX



MLSDLBDBOX

### PRODUCT DESCRIPTION:

Connection and distribution boxes enhance the ease and flexibility of installing MaxLite's LED lightbars. The connector box allows installers to make a hardwired connection to the lightbar system. Its unique profile allows the wiring connection to be located in a wide range of locations, while complying with National Electrical Code (NEC) requirements.

The low-profile distribution box allows up to four separate light bar chains to run from the same 120-volt source, and integrates an on/off switch for additional convenience. Both boxes are ETL-listed and suitable for use in indoor locations with high condensation, such as bathrooms, utility rooms and indoor pool areas.

### FEATURES:

- High quality construction
- Easy/fast installation
- Increases safety
- Elegant and compact (compared to normal junction boxes)

MODEL SELECTION		Typical order example: MLSDLBCBOX	
MLSDLB			
FAMILY		TYPE	
MLSDLB=	Self-Driven Light Bar	CBOX=	Connector Box
		DBOX=	Distribution Box

### SPECIFICATIONS:

#### MLSDLB-CBOX & MLSDLB-DBOX

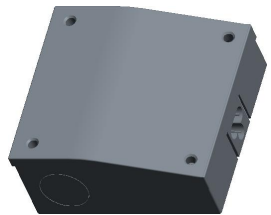
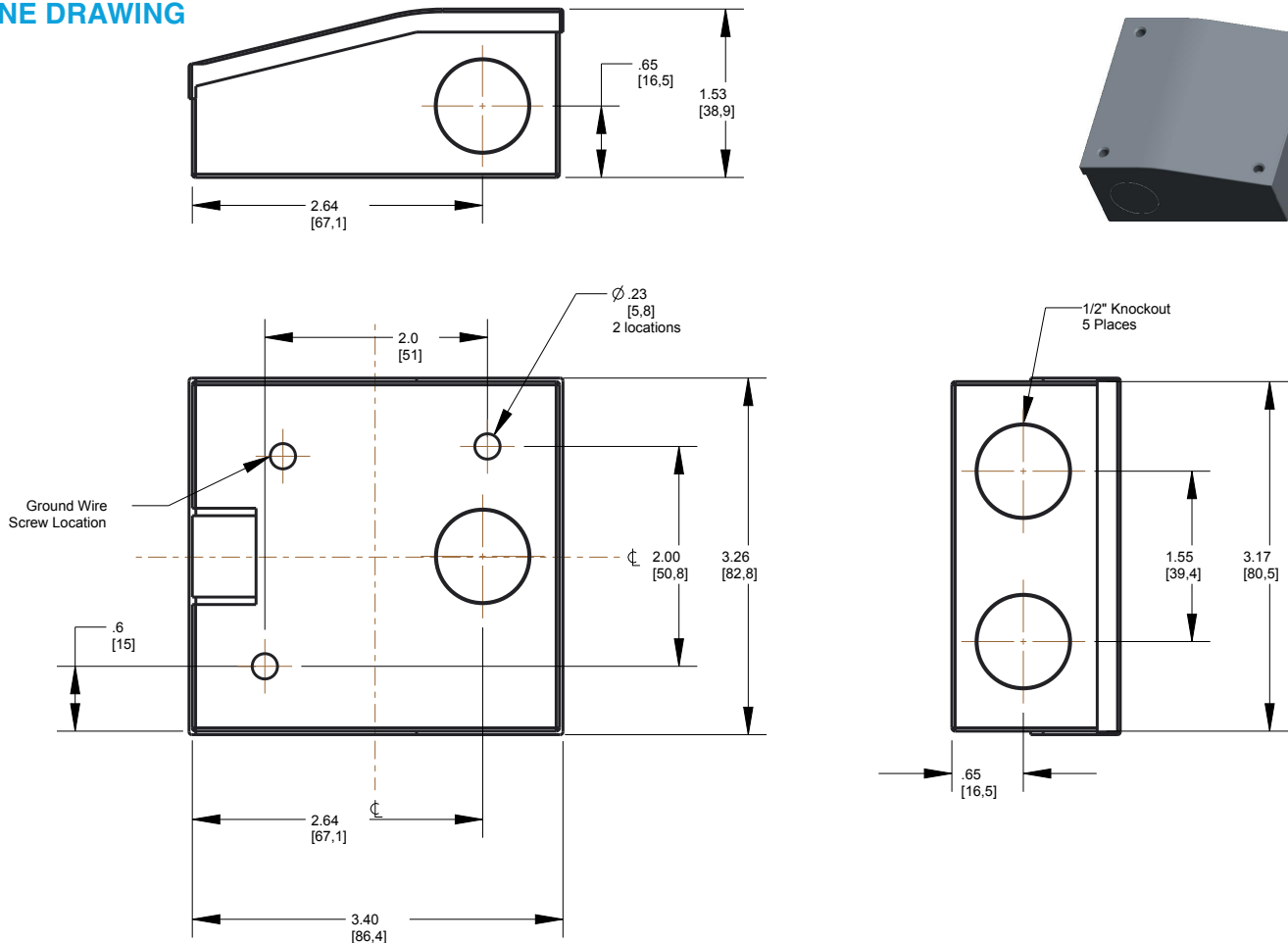
ITEM	SPECIFICATION	DETAILS
ELECTRICAL	Input Voltage	120VAC
	Max Wattage	300W
CERTIFICATION	Certification	cETL damp-listed

### ORDERING\*:

ORDER CODE	MODEL NUMBER
74085	MLSDLB-CBOX
74230	MLSDLB-DBOX

\*Please contact your MaxLite representative to order products that don't have order codes listed here.

### CONNECTOR BOX LINE DRAWING



### DISTRIBUTOR BOX LINE DRAWING

