

HEX-NUT WATERTIGHT CONNECTORS - ALUMINUM DIE CAST CHROME PLATED

For Oval Service Entrance Cables UL Listed



Discontinued see WTC-22
 Discontinued see WTC-22
 Discontinued see WTC-23
 Discontinued see WTC-23



Catalog No.	UPC #	Hub Size	Bushing Opening	Oval SEU			
				Cable Size	Ctn. Qty	Std. Pkg	Wgt/100
HN-3N	01056	1"	.58 x .91	3 No. 4	20	100	20
HN-23	01072	1 1/4"	.55 x .78	3 No. 2	10	50	26
HN-23B	01073	1 1/4"	.61 x .98	3 No. 2	10	50	26
HN-33	01070	1 1/4"	.58 x .91	3 No.3	10	50	26
HN-33B	01071	1 1/4"	.66 x 1.06	3 No. 4-3	10	50	26
HN-34B	01069	1 1/4"	.62 x 1.03	3 No. 6-4	10	50	26
HN-211	01085	1 1/2"	.77 X 1.25	3 No. 1	5	25	66
HN-1/0R	01089	1 1/2"	.83 X 1.34	3 No. 1/0	5	25	64
HN-2/0R	01090	1 1/2"	.94 X 1.47	3 No. 2/0	5	25	62
HN-2/0RB	01091	1 1/2"	.85 x 1.39	3 No. 2/0	5	25	63
HN-1/0RS	01095	2"	.94 x 1.47	3 No. 1/0	5	25	55
HN-2/0RSB	01097	2"	.85 x 1.39	3 No. 2/0	5	25	55
HN-2/0RS	01096	2"	.94 x 1.47	3 No. 2/0	5	25	52
HN-3/0R	01098	2"	.97 x 1.56	3 No. 3/0	5	25	52
HN-4/0R	01099	2"	1.16 x 1.72	3 No. 4/0	5	25	52
HN-4/0RB	01100	2"	.98 x 1.63	3 No. 4/0	5	25	52

HEX-NUT STRAIN RELIEF WATERTIGHT CONNECTORS -Zinc

For Round Service Cable - Portable Cords



Catalog No.	UPC #	Hub Size	Bushing Opening	Oval SEU			
				Cable Size	Ctn. Qty	Std. Pkg	Wgt/100
HR-51	01250	1/2"	.19 - .26	---	20	100	10
HR-52	01251	1/2"	.26 - .375	---	20	100	10
HR-53	01252	1/2"	.375 - .500	---	20	100	10
HR-54	01253	1/2"	.38 - .44	Discontinued			
HR-71	01260	3/4"	.375 - .500	---	20	100	11
HR-72	01261	3/4"	.50 - .625	---	20	100	11
HR-73	01262	3/4"	.625 - .750	---	20	100	11
HR-74	01263	3/4"	.56 - .63	Discontinued			

HEX-NUT WATERTIGHT CONNECTORS - Zinc

For Oval Service Entrance Cables * Zinc Die Cast UL Listed



Catalog No.	UPC #	Hub Size	Bushing Opening	Oval SEU			
				Cable Size	Ctn. Qty	Std. Pkg	Wgt/100
WTC-1	01036	1"	.410 x .65	3 No. 8	10	100	34
WTC-2	01037	1"	.460 x .715	3 No. 6	10	100	34
WTC-3	01038	1"	.530 x .850	3 No.4	10	100	34
WTC-11	01039	1 1/4"	.550 x .910	3 No. 3	10	100	52
WTC-12	01040	1 1/4"	.580 x .960	3 No. 2	10	100	52
WTC-13	01041	1 1/4"	.660 x 1.12	3 No. 1	10	100	52
WTC-22	01042	1 1/2"	.705 x 1.195	3 No. 1/0	5	50	65
WTC-23	01043	1 1/2"	.740 x 1.235	3 No. 2/0	5	50	65
WTC-31	01044	2"	.700 x 1.195	3 No. 1/0	5	50	87
WTC-32	01045	2"	.8125 x 1.25	3 No. 2/0	5	50	87
WTC-33	01046	2"	.75 x 1.38	3 No. 3/0	5	50	87
WTC-34	01047	2"	.875 x 1.44	3 No. 4/0	5	50	87
WTC-35	01048	2"	.995 x 1.580	3 No. 4/0	5	50	87

TWO-SCREW TYPE S.E. CABLE CONNECTOR - SAND CAST ALUMINUM

UL Listed



Catalog No.	UPC #	Hub Size	Bushing Opening	Oval SEU		Std. Pkg	Wgt/ 100
				Cable Size	Ctn. Qty		
033R	01135	1 1/4"	.61 x .98	3 No. 3	10	50	31
032R	01137	1 1/4"	.66 x 1.06	3 No. 2	10	50	31
032RB	01138	1 1/4"	.62 x 1.03	3 No. 2	10	50	32
1/0R	01154	1 1/2"	.83 x 1.34	3 No. 1/0	5	25	63
2/0R	01155	1 1/2"	.94 x 1.47	3 No. 2/0	5	25	59
2/0RB	01156	1 1/2"	.85 x 1.39	3 No. 2/0	5	25	63
1/0RS	01159	2"	.83 x 1.34	3 No. 1/0	5	25	61
2/0RS	01160	2"	.94 x 1.47	3 No. 2/0	5	25	65
2/0RSB	01161	2"	.85 x 1.39	3 No. 2/0	5	25	61
3/0R	01162	2"	.97 x 1.56	3 No. 3/0	5	25	60
4/0R	01163	2"	1.16 x 1.72	3 No. 4/0	5	25	56
4/0RB	01164	2"	.98 x 1.63	3 No. 4/0	5	25	59

*NOTE: Connectors should be selected with reference to bushing opening size and actual physical dimensions of cable being used. The letter (B) in the Cat. No. indicates connectors recommended for Plastic Jacketed Cable

NON-WATERTIGHT CONNECTORS - ZINC - PRESSURE CAST

UL Listed



Catalog No.	UPC #	KO Size	Cable Size	Ctn. Qty	Std. Pkg	Wgt/ 100
474	07000	1/2"	3/8" Trade Size	100	1000	5
475	07001	1/2"	3/8" Trade Size	100	1000	6
55	01315	3/4"	3 No. 6-4 Oval-Round	25	250	9
56	01316	1"	3 No. 6-4-2 Oval-Rd	40	200	16
57	01317	1 1/4"	3 No. 6-4-2 Oval	20	100	25
58	01318	1 1/2"	3 No. 1/0-2/0 Oval	10	100	37
59	01319	2"	3 No. 3/0-4/0 Oval	10	50	50
57R	01304	1 1/4"	6 No. 6-4-2 Round	20	100	25
58R	01314	1 1/2"	3 No. 1/0-2/0 Round	10	100	37
59R	01320	2"	3 No. 3/0-4/0 Round	10	50	51

SERVICE CABLE SILL PLATES - CAST ALUMINUM

(With Compound and Screws)



Catalog No.	UPC #	Cable Size	Ctn. Qty	Std. Pkg	Wgt/ 100
12	01461	3 No. 4-2	20	100	19
2	01462	3 No. 4-2	20	100	18
13	01463	3 No. 1/0-2/0	-	10	63
14	01464	3 No. 3/0-4/0	-	10	85
15	01466	3 No. 3/0-4/0	-	10	85
*112	01465	3 No. 4-2	10	100	12

*Gray PVC for 1" E.M.T. or Cable

NON-METALLIC SERVICE ENTRANCE CABLE HEADS



Catalog No.	UPC #	Cable Size	Ctn. Qty	Std. Pkg	Wgt/ 100
24	01351	3 No. 3-1	-	20	42
256	01353	3 No.2/0-4/0	-	20	54

PVC SERVICE ENTRANCE CABLE HEAD WITH GALVANIZED STEEL MOUNTING STRAP



Catalog No.	UPC #	Cable Size	Ctn. Qty	Std. Pkg	Wgt/ 100
355	01354	3 No. 3-2	10	50	26
357	01356	3 No.2/0-4/0	-	10	53

SERVICE ENTRANCE CABLE HEADS - CAST ALUMINUM



Catalog No.	UPC #	Cable Size	Ctn. Qty	Std. Pkg	Wgt/ 100
255	01363	3 No. 3-2	5	50	31
258	01364	3 No.1/0-2/0	-	20	70
257	01365	3 No.3/0-4/0	-	20	93

SERVICE ENTRANCE CABLE HEADS - DIE CAST



Catalog No.	UPC #	Cable Size	Ctn. Qty	Std. Pkg	Wgt/ 100
255DC	20015	3 No. 8-1	5	50	40
257DC	20016	3 No.1/0-4/0	-	20	110

SERVICE CABLE STRAP - STAMPED ALUMINUM (2 HOLE)



Catalog No.	UPC #	Cable Size	Ctn. Qty	Std. Pkg	Wgt/ 100
THC2A	01426	3 No. 3-2	100	1000	2.8
THC2/0A		3 No. 1/0-2/0	50	500	5
THC4/0A		3 No. 3/0-4/0	50	500	5

SERVICE CABLE STRAP - STEEL (2 HOLE)



Catalog No.	UPC #	Cable Size	Ctn. Qty	Std. Pkg	Wgt/ 100
THC6		3 No. 8-2	100	1000	2.6
THC2		3 No. 3-2	100	1000	2.8
THC2/0	01427	3 No. 1/0-2/0	50	500	5
THC4/0	01428	3 No. 3/0-4/0	50	500	5

SERVICE CABLE STRAP - EXTRUDED ALUMINUM (1 HOLE)




Catalog No.	UPC #	Cable Size	Ctn. Qty	Std. Pkg	Wgt/ 100
230-X	01418	3 No. 8-2	100	1000	1.3
232-X	01419	3 No. 3-2	100	1000	2.3
282-X	01420	3 No. 1/0-2/0	50	500	4.5
*282-XB	01421	3 No. 1/0-2/0	50	500	4.5
284-X	01422	3 No. 3/0-4/0	50	500	5
*284-XB	01423	3 No. 3/0-4/0	50	500	5

*For Plastic Jacketed Cable

Heat treated aluminum alloy for greater strength malleability and corrosion resistance. The offset leg provides the necessary leverage for fastening cable with varying outside dimensions.


SERVICE MAST HEADS - COMBINATION SLIPFITTER - ALUMINUM



Catalog No.	UPC #	Pipe Size	Cap Size	Ctn. Qty	Std. Pkg	Wgt/ 100
2400	02000	2"	1 1/4"	10	10	81
2600	02002	2 1/2"	1 1/4"	10	10	93
2550	02001	2"	1 1/2"	10	10	96
2650HC	02003	2 1/2"	2"	10	10	145
3650	20286	3"	2"	1	1	165


SERVICE MAST HEADS - COMBINATION SLIPFITTER - ALUMINUM

Split Insulators for Three Wire Service - Residential



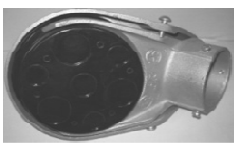
Catalog No.	UPC #	Pipe Size	Cap Size	Ctn. Qty	Std. Pkg	Wgt/ 100
2425	02005	2"	1 1/4"	10	10	60
2625		2 1/2"	1 1/4"	10	10	80
2825	02009	2 1/2"	2"	10	10	130

SERVICE MAST HEADS - CLAMP-ON TYPE - 1/2" - 2" DIE CAST ALUMINUM *2" - 4" SAND CAST



Catalog No.	UPC #	Pipe Size	Insulator Hole Sizes	No. of Holes	Ctn. Qty	Std. Pkg	Wgt/ 100
240DC	20009	1/2"	19/64	4	50	50	25
241DC	20010	3/4"	3/8,13/32	2 / 3	25	25	33
242DC	20011	1"	7/16, 1/2	2 / 3	25	25	50
243DC	20012	1 1/4"	27/64, 5/8	2 / 3	10	10	53
244DC	20013	1 1/2"	19/32, 7/16, 3/4	2 / 1 / 3	10	10	75
245DC	20014	2"	17/32, 3/4, 1	1 / 2 / 3	10	10	85
*245RHC	03035	2"	17/32, 3/4, 1	1 / 2 / 3	10	10	132
*246R	03036	2 1/2"	7/8, 1, 1-1/8	3 / 1 / 3	1	1	440
*247R	03037	3"	5/16	3 / 1 / 3	1	1	440
*248R	03038	3 1/2"	1-1/8, 1-3/4	4 / 3	1	1	800
*249R	03039	4"	1-1/8, 1-3/4	4 / 3	1	1	850

SERVICE MAST HEADS - SLIPFITTER - 1/2" - 1 1/2" DIE CAST ALUMINUM *2" - 4" SAND CAST



Catalog No.	UPC #	Pipe Size	Insulator Hole Sizes	No. of Holes	Ctn. Qty	Std. Pkg	Wgt/ 100
290DC	20023	1/2"	19/64	4	50	50	25
291DC	20024	3/4"	3/8,13/32	2 / 3	25	25	33
292DC	20025	1"	7/16, 1/2	2 / 3	25	25	50
293DC	20026	1 1/4"	27/64, 5/8	2 / 3	10	10	53
294DC	20027	1 1/2"	19/32, 7/16, 3/4	2 / 1 / 3	10	10	75
*295HC	03015	2"	17/32, 3/4, 1	1 / 2 / 3	10	10	130
*296	03016	2 1/2"	7/8, 1, 1-1/8	3 / 1 / 3	1	1	430
*297	03017	3"	5/16	3 / 1 / 3	1	1	427
*298	03018	3 1/2"	1-1/8, 1-3/4	4 / 3	1	1	790
*299	03019	4"	1-1/8, 1-3/4	2 / 4	1	1	810

SERVICE MAST HEADS - THREADED - 1/2" - 2" DIE CAST ALUMINUM *2 1/2" - 4" SAND CAST



Catalog No.	UPC #	Pipe Size	Insulator Hole Sizes	No. of Holes	Ctn. Qty	Std. Pkg	Wgt/ 100
260DC	20017	1/2"	19/64	4	50	50	25
261DC	20018	3/4"	3/8,13/32	2 / 3	25	25	33
262DC	20019	1"	7/16, 1/2	2 / 3	25	25	50
263DC	20020	1 1/4"	27/64, 5/8	2 / 3	10	10	53
264DC	20021	1 1/2"	19/32, 7/16, 3/4	2 / 1 / 3	10	10	75
265DC	20022	2"	17/32, 3/4, 1	1 / 2 / 3	10	10	85
*266	03006	2 1/2"	7/8, 1, 1-1/8	3 / 1 / 3	1	1	413
*267	03007	3"	5/16	3 / 1 / 3	1	1	413
*268	03008	3 1/2"	7/8, 1, 1-1/8, 1-3/4	4 / 3	1	1	825
*269	03009	4"	1-1/8, 1-3/4	2 / 4	1	1	840
*269-A	03010	5"	1-1/8, 1-3/4	2 / 4	1	1	880
*269-B	03011	6"	1-1/8, 1-3/4	2 / 4	1	1	875

CONDUIT SERVICE HEADS - CLAMP-ON PVC



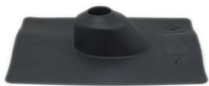
Catalog No.	UPC #	Pipe Size	Ctn. Qty	Std. Pkg	Wgt/ 100
PVC240	03042	1/2"	-	25	16
PVC241	03043	3/4"	-	25	16
PVC242	03044	1"	-	20	25
PVC243	03045	1 1/4"	-	10	40
PVC244	03046	1 1/2"	-	10	40
PVC245	03047	2"	-	5	80

GALVANIZED ROOF FLASHING WITH NEOPRENE COLLAR



Catalog No.	UPC #	Pipe Size	Base Size	Std. Pkg	Wgt/ 100
2890	02112	1 1/4" - 1 1/2"	8 3/4 x 12 1/2	25	103
2900	02114	2"	10 3/4 x 14 1/2	25	141
3000	02115	2 1/2"	10 3/4 x 14 1/2	12	146
3100	02116	3"- 3 1/2"	10 3/4 x 14 1/2	12	146
3300	02118	4"	12 x 16	12	189

GALVANIZED ROOF FLASHING WITH NEOPRENE COLLAR



Catalog No.	UPC #	Pipe Size	Base Size	Std. Pkg	Wgt/ 100
2890N	02130	1 1/4" - 1 1/2"	9 x 11 1/2	12	53
2900N	02132	2"	9 x 11 1/2	12	53
3000N	02133	2 1/2"	9 x 11 1/2	12	47
3100N	02134	3"- 3 1/2"	10 x 14	12	71

COMBINATION ROOF FLASHINGS & SUPPORTS - CAST ALUMINUM with Compound & Screws



Catalog No.	UPC #	Pipe Size	Base Size	Std. Pkg	Wgt/100
RP125	02100	1 1/4"	7 5/8 x 9 5/8	10	145
RP150	02101	1 1/2"	7 5/8 x 9 5/8	10	211
RP200	02102	2"	10 x 12	10	210
RP250	20001	2 1/2"	10 x 12	10	215
ORP200*	02107	1 1/4" - 2"	8 x 10	10	212

*(ORP200 for use when mast is carried outside of rain gutter)

CONDUIT SUPPORT - LAG SCREW TYPE - EXTRUDED ALUMINUM



Catalog No.	UPC #	Pipe Size	Std. Pkg	Wgt/100
2350LA	02068	2"	25	31
2850LA	02069	2 1/2"	25	36

CONDUIT SUPPORT - EXTRUDED ALUMINUM with 1/2" x 10" Bolt, Nut & Washer



Catalog No.	UPC #	Pipe Size	Std. Pkg	Wgt/100
2125-A	02065	1 1/4"	25	67
2350-A	02066	2"	25	77
2850-A	02067	2 1/2"	25	78

CONDUIT SUPPORT - LAG SCREW TYPE - MALLEABLE IRON



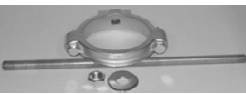
Catalog No.	UPC #	Pipe Size	Std. Pkg	Wgt/100
2350L	02060	2"	25	31
2850L	02061	2 1/2"	25	36

CONDUIT SUPPORT - MALLEABLE IRON with 1/2" x 10" Bolt, Nut & Washer



Catalog No.	UPC #	Pipe Size	Std. Pkg	Wgt/100
2350	02054	2"	25	77
2850	02055	2 1/2"	25	78

CONDUIT SUPPORT - MALLEABLE IRON with 5/8" x 14" Bolt, Nut & Washer



Catalog No.	UPC #	Pipe Size	Std. Pkg	Wgt/100
2950	02065	3"	10	250
3050	02066	3 1/2"	10	279
3150	02067	4"	10	284

ADJUSTABLE CONDUIT SUPPORT - STAMPED STEEL with 1/2" x 10" Bolt, Nut & Washer



Catalog No.	UPC #	Pipe Size	Std. Pkg	Wgt/100
2125	02050	1 1/4" - 3"	20	78

ADJUSTABLE CONDUIT SUPPORT - STAMPED STEEL with LAG SCREW



Catalog No.	UPC #	Pipe Size	Std. Pkg	Wgt/100
2125L		1 1/4" - 3"	20	78

SERVICE MAST INSULATOR BRACKETS (2 1/4" SPOOL) Non-Adjustable Type - Steel



Catalog No.	UPC #	Pipe Size	Std. Pkg	Wgt/100
4000	02152	2"	10	152
4050	02153	2 1/2"	10	152
4400	02154	3"	10	240
4500	02155	3 1/2"	10	260
4600	02156	4"	10	260

SERVICE MAST INSULATOR BRACKETS (3" SPOOL) Heavy-Duty Non-Adjustable Type - Steel



Catalog No.	UPC #	Pipe Size	Std. Pkg	Wgt/100
4400H	02162	3"	5	443
4500H	02163	3 1/2"	5	458
4600H	02164	4"	5	458

CONDUIT HANGER INSULATOR BRACKET



Catalog No.	UPC #	Pipe Size	Std. Pkg	Wgt/100
4000CH		2"	20	160

SERVICE MAST INSULATOR BRACKETS (2 1/4" SPOOL) Adjustable Type - Steel



Catalog No.	UPC #	Pipe Size	Std. Pkg	Wgt/100
4900	02150	1 1/4" - 2 1/2"	20	160

ADJUSTABLE WIREHOLDER - STAMPED STEEL



Catalog No.	UPC #	Pipe Size	Std. Pkg	Wgt/100
4200	02151	1 1/4" - 3"	20	160

OFFSET BOTTOM REDUCERS - SLIPFITTER - CAST ALUMINUM



Catalog No.	UPC #	Pipe Size	Hub Size	Std. Pkg	Wgt/100
2200X	02152	2"	1 1/4"	50	152
2700X	02153	2 1/2"	1 1/4"	25	152
2750	02154	2 1/2"	1 1/2"	25	240
3600	02155	2 1/2"	2"	25	260
3700	02156	3"	2"	10	260

WEDGE GRIP CLAMPS - ALUMINUM WITH SOLID STAINLESS STEEL BAIL



Catalog No.	UPC #	Size	Std. Pkg	Wgt/100
WC2ACSR		6 ACSR - 2 ACSR	50	
WC1/0ACSR		4 ACSR - 1/0 ACSR	25	
WC4/0ACSR		2/0 ACSR - 4/0 ACSR	25	