

## FEATURES & SPECIFICATIONS

**INTENDED USE** — The IBZ fluorescent high bay is ideal for new construction and renovation projects. It is a one-for-one replacement of common metal halide high bay systems. The unique Cool Running Plus™ technology provides industry-leading, trouble-free operation in ambient temperatures up to 155°F (68°C). Applications include manufacturing, warehousing, commercial and industrial facilities. The IBZ fixture performs well at mounting heights from 15'-40'. **Certain airborne contaminants can diminish integrity of acrylic. Click here for Acrylic Environmental Compatibility table for suitable uses.**

**CONSTRUCTION** — The highly configurable design of the IBZ high bay allows for a multitude of fixture options that can either be factory- or field-installed. The easy-access ballast channel houses the proprietary Cool Running Plus technology, which is the most advanced fluorescent ballast technology available for fluorescent high bay lighting. It has independent lamp operation to reduce lamp maintenance costs, is fast-starting to improve occupancy sensing, and a proprietary thermal-sensing processor that allows for reliable operation in environments where ambient temperatures can reach up to 155°F (68°C).

In addition to the reliable operation of IBZ fixtures, the reflectors tightly control the distribution of light and effectively manage lamp heat to increase the overall efficiency. The result is superior optics in either narrow distribution for aisles, or wide distribution for general lighting. Installation is made quick and easy with IBZ hanging accessories such as the aircraft cable and single-point mounting bracket. IBZ fixtures can be factory-wired to have both sensors and cord sets, further reducing installation time. The configurability, performance and ease of installation make IBZ fixtures the preferred choice for fluorescent high bay lighting.

Channel is formed of heavy-duty code-gauge (22-gauge) steel to stand up to the most demanding elements. Lamp holder assembly protects from incidental damage or movement of sockets during handling and installation. Sockets include secure positioning rotating collars with enclosed contacts. Access plate on the back of the channel housing allows quick and easy wiring.

Finish: Channel is high-gloss white baked enamel; five-stage iron phosphate pretreatment ensures superior paint adhesion and rust resistance.

**OPTICS** — Two optical systems are available. Narrow distribution is ideal for narrow or aisle lighting applications and features precision-formed segmented optics utilizing specular aluminum reflector. Provides 95% reflectivity and warranted for 25 years. Wide distribution includes high-reflectance white finish for general or open areas.

**ELECTRICAL** — Thermally protected, resetting, Class P, HPF, A sound-rated electronic ballast. AWM TFM or THHN wire used throughout rated for required temperatures. Ballast disconnect (BDP) is standard unless EL14 or cord set is requested.

**INSTALLATION** — Suitable for suspension by chain, cable, surface-mounting bracket, hook monopoint or single (pendant) monopoint. Surface mounting not recommended without optional surface mounting bracket. To maintain high ambient listing, fixture should be mounted at a minimum plenum height of 8".

**LISTINGS** — CSA Certified to U.S. and Canadian safety standards (UL1598 and CSA 250.0-08) for 55°C and 40°C lensed. Suitable for damp locations.

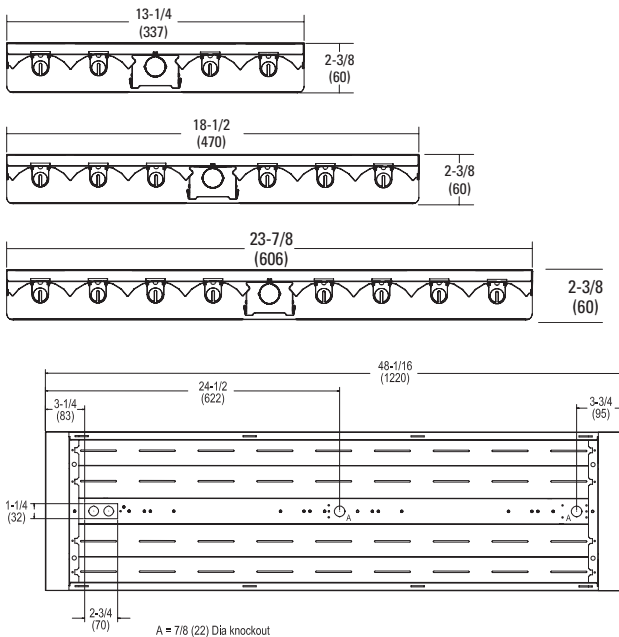
**WARRANTY** — 1-year limited warranty. Complete warranty terms located at [www.acuitybrands.com/CustomerResources/Terms\\_and\\_conditions.aspx](http://www.acuitybrands.com/CustomerResources/Terms_and_conditions.aspx)

Actual performance may differ as a result of end-user environment and application.

Note: Specifications subject to change without notice.

## DIMENSIONS

Dimensions may vary with options or accessories.



Catalog Number
Notes
Type



Fluorescent High Bay

# IBZ

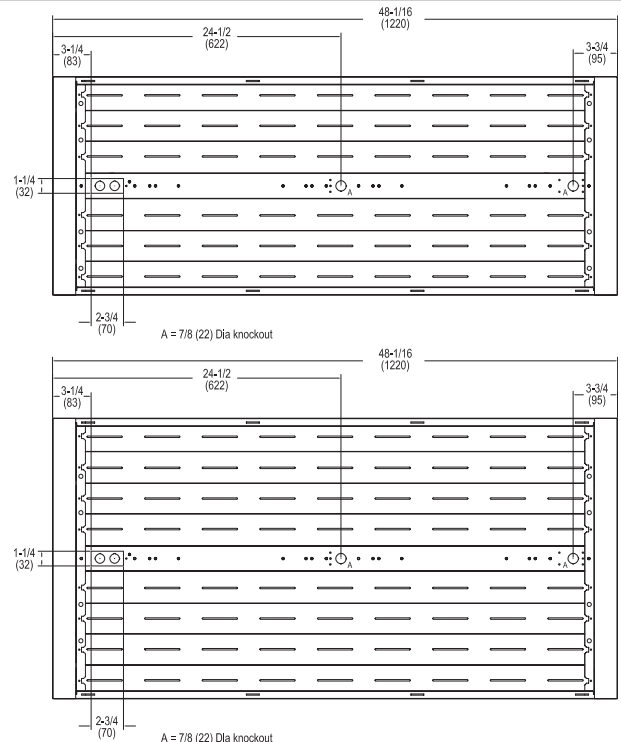
4-, 6- or 8-lamp T5HO

Patent Pending



SPECIFICATIONS				
	Length	Width	Depth	Weight
<b>4-lamp</b>	48-1/16 (1221)	13-1/4 (337)	2-3/8 (60)	16 lbs. (7.3 kg)
<b>6-lamp</b>	48-1/16 (1221)	18-1/8 (460)	2-3/8 (60)	20 lbs (9.1 kg)
<b>8-lamp</b>	48-1/16 (1221)	23-7/8 (606)	2-3/8 (60)	25 lbs. (11.3 kg)

All dimensions are inches (millimeters) unless otherwise specified and may vary with options or accessories.



# IBZ Fluorescent High Bay, T5H0

## ORDERING INFORMATION

For shortest lead times, configure products using **standard options (shown in bold)**.

**Example: IBZ 454L**

IBZ	Lamp type	Distribution	Shielding <sup>2,3</sup>	Voltage	Ballast configuration	Ballast
<b>IBZ</b> <i>For tandem double-length unit, add prefix "T". Ex: TIBZ</i>	<b>Lamps installed<sup>1</sup></b>	<b>(blank)</b> Narrow distribution, ≤5% uplight NDU Narrow distribution, enhanced uplight, ≤13% uplight	<b>(blank)</b> No shielding A12125 Pattern 12 acrylic, 0.125" <sup>4</sup>	<b>(blank)</b> MVOLT; 120-277V HVOLT 347V-480V <sup>5</sup>	<b>(blank)</b> Standard configuration 4-lamp = (1) 4-lamp ballast 6-lamp = (1) 2-lamp and (1) 4-lamp ballast 8-lamp = (2) 4-lamp ballasts	<b>(blank)</b> Cool Running Plus T5 electronic, 1.0 BF, programmed rapid start <b>GEB10PS90</b> T5 electronic, 1.0 BF, programmed rapid start
	<b>454L</b> 4-lamp 54W T5H0 <b>654L</b> 6-lamp 54W T5H0 <b>854L</b> 8-lamp 54W T5H0					
	<b>Unlamped</b>	<b>WD</b> Wide distribution, ≤5% uplight WDU Wide distribution, enhanced uplight, ≤13% uplight	ACL Clear acrylic, 0.125" <sup>4</sup> PCL125 Clear polycarbonate, 0.125" <sup>4</sup> NLWG No lens; wireguard in door frame			
	<b>454</b> 4-lamp 54W T5H0 <b>654</b> 6-lamp 54W T5H0 <b>854</b> 8-lamp 54W T5H0					

Lamp color	Options
<b>(blank)</b> F54T5H0/841 LP835 F54T5H0/835 LP850 F54T5H0/850 <b>Amalgam lamps<sup>6</sup></b> LP841A F54T5H0/841 LP835A F54T5H0/835 LP850A F54T5H0/850 <b>Energy-saving 49W lamps</b> P841E49 F54T5H0/841 P835E49 F54T5H0/835 P850E49 F54T5H0/850	GLR Internal fast-blow fuse <sup>7,8</sup> GMF Internal slow-blow fuse <sup>7,8</sup> EL14 Emergency battery pack <sup>7,9,10</sup> EL14SD Emergency battery pack w/ self-diagnostics <sup>7,9,10</sup> I162 1250 lumens per lamp battery <sup>9,10,11</sup> OUTCTR Wiring leads pulled through back center of fixture <sup>3</sup> OCS RELOC <sup>®</sup> OnePass <sup>®</sup> 5" installed <sup>7</sup> IMP Integrated modular plug <sup>12,23</sup> FSP Integral full side panels PBTSKT Polybutylene terephthalate sockets
	<b>Cord sets:</b> CS1W Straight plug, 120V <sup>13,14</sup> CS3W Twist-lock, 120V <sup>13,14</sup> CS7W Straight plug, 277V <sup>13,14</sup> CS11W Twist-lock, 277V <sup>13,14</sup> CS25W Twist-lock, 347V <sup>13,14</sup> CS97W Twist-lock, 480V <sup>13,14</sup> CS93W 600 SO white cord, no plug (no voltage required) <sup>13,14</sup>
	<b>Motion sensors:</b> MSI Aisle motion sensor, pre-wired <sup>15</sup> MSI360 360° motion sensor, pre-wired <sup>15</sup> MSE360 360° motion sensor, embedded <sup>7,16</sup> MSE360LB 360° motion sensor, embedded <sup>7,17</sup> XP1 XPoint single relay <sup>18</sup> XP2 XPoint double relay <sup>18</sup> <b>Wireguards:</b> WGX External wireguard installed 2WGX External wireguard installed on bottom of fixture <sup>19</sup>

Accessories: Order as separate catalog number.			
<b>Mounting:</b> IBAC120 M20 Aircraft cable 10' with hook (one pair) IBAC240 M20 Aircraft cable 20' with hook (one pair) IBHMP Hook monopoint IBZACVH Aircraft 10' V hanger (one pair) IBZTFC Tandem coupler and side panel IBZPMP Pendant monopoint splice box, includes side covers <sup>20</sup> IBZPMPHB Pendant monopoint splice box, includes side covers (3/4" hub) <sup>20</sup> HBBS36 Chain hanger, 36" (one pair) IBZSMB Surface-mounting bracket (one pair)	<b>Field-installable door and lens assemblies:</b> <sup>21,22</sup> DLIBZ14 A12125 4-lamp pattern 12 acrylic lens, 0.125" <sup>21,22</sup> DLIBZ14 ACL 4-lamp clear acrylic lens <sup>21,22</sup> DLIBZ14 PCL125 4-lamp clear polycarbonate lens, 0.125" <sup>21,22</sup> DLIBZ19 A12125 6-lamp pattern 12 acrylic lens, 0.125" <sup>21,22</sup> DLIBZ19 ACL 6-lamp clear acrylic lens <sup>21,22</sup> DLIBZ19 PCL125 6-lamp clear polycarbonate lens, 0.125" <sup>21,22</sup> DLIBZ24 ACL 8-lamp clear acrylic lens <sup>21,22</sup> DLIBZ24 PCL125 8-lamp clear polycarbonate lens, 0.125" <sup>21,22</sup>	<b>Cord sets and sensors for IMP option:</b> CS1WIMP Straight plug, 120V <sup>7,13,14</sup> CS3WIMP Twist-lock, 120V <sup>7,13,14</sup> CS7WIMP Straight plug, 277V <sup>7,13,14</sup> CS11WIMP Twist-lock, 277V <sup>7,13,14</sup> CS25WIMP Twist-lock 347V CS93WIMP 600V SO white cord, no plug (no voltage required) <sup>13</sup> CS97WIMP Twist-lock 480V MSIIMP Aisle sensor <sup>7,23</sup> MSI360IMP 360° sensor <sup>7,23</sup>	<b>Wireguards:</b> WGIBZ14 Standard 4-lamp wireguard WGIBZ19 Standard 6-lamp wireguard WGIBZ24 Standard 8-lamp wireguard

### Notes

- Lamps installed are F54T5H0/841 unless otherwise specified.
- 5/55°F warranty with open fixtures only.
- Not available with MSE360 option.
- For wireguard in door frame, add "WG" to shielding. Ex: A12125WG.
- Not available with Cool Running Plus ballast.
- Not for use with motion sensors.
- Specify voltage. Consult factory for Canadian applications.
- Not available with 347 voltage.
- Battery options require a BACKPACK™ installed by the factory in order to accommodate the size of the battery. The BACKPACK is NOT field installable. May only be surface mounted using IBZSMB. Not available with pendant mount using IBZ PMP or IBZ PMPHB. Not available with IMP.
- Certified to UL1598 (approx. 1100 lumens at 25°C when using 49W lamps, and 911 lumens at 45°C). Single-lamp operation only. 120 or 277 voltage only.
- Max 2500 lumens when used with 54W T5 lamps up to 55°C ambient temperature (120 or 277 voltage only).
- Must be factory-installed. Not available on TIBZ 16-lamp configurations.
- All cord sets are 18/3, 6', white.
- Cord sets are voltage specific. Specify voltage. Other configurations available. Consult factory.
- Specify voltage; 120, 208, 240, 277, 347 or 480.
- Recommended for heights of 30-40'. Not available with lensed units. 120, 277 or 347 voltage only.
- Embedded sensor. For mounting heights up to 20', not available with lensed units. 120, 277 or 347 voltage only.
- Contact LC&D for additional system components required.
- One wireguard shipped as separate line item for top installation in field. Not available with IBZPMP.
- When ordering IBZPMP, two-ballast configurations are recommended. Ex: 2/2. Not available with tandem units. Not available with any battery pack.
- Not available with MSE360 or MSE360LB.
- Add WG to nomenclature if wire guard is to be installed in door frame, ex: DLIBZ14 A12125WG.
- Must have "IMP" power cord to power fixture.



IBZ\_X54