

FEATURES & SPECIFICATIONS

INTENDED USE — The industry's next generation in linear direct fluorescent products. This new compact, low-profile design offers our customers unique product features which improve the overall installation process and appearance while reducing labor cost, making it the most versatile solution for commercial, retail, manufacturing, warehouse, and cove and display applications.

CONSTRUCTION — Compact designed channel and cover are formed from code-gauge cold-rolled steel. Innovative T8 two-lamp back plate offers compact design and additional socket protection. Locking lamp holder tracks bolsters strength of the overall strip construction while creating improved lamp stability. Design includes T8 socket, features rotating collar and enclosed contacts. Improved easy "snap n' lock" end plates allow for quick attachment.

Designed to accommodate a wide variety of T8 lamp lengths. Channel offers the gripper back feature which strengthens the overall construction and allows for the use of the new Z spring hanger (see back). Newly designed, patent-pending channel cover offers a secure fit design, allowing for easy access and quick attachment without pinching wires.

Finish: High-gloss, baked white enamel finish (white standard). Five-stage iron-phosphate pretreatment ensures superior paint adhesion and rust resistance. Other channel paint finish options: black (MB), smoke gray (SMG) and galvanized (GALV).

OPTICS — Reflector options include solid or apertured designs in both symmetric and asymmetric configurations. Consult factory for special-apertured versions.

ELECTRICAL — Thermally protected, resetting, Class P, HPF, non-PCB, UL listed. Suitable for damp locations. AWN, TFN or THHN wire used throughout, rated for required temperatures.

INSTALLATION — Patented-pending "three-point" row connector locks channel together for straighter and faster row mounting; included as standard. Ideal for surface-mount or suspended.

LISTINGS — UL Listed, CUL Listed or CSA Certified to Canadian Standards. Listed for 25° C ambient temperature.

WARRANTY — 1-year limited warranty. Complete warranty terms located at www.acuitybrands.com/CustomerResources/Terms_and_conditions.aspx

Note: Specifications subject to change without notice.

Actual performance may differ as a result of end-user environment and application.

Catalog Number
Notes
Type



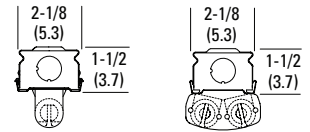
Low-Profile T5/T8 Striplight



Linear Lamps
1 or 2 Lamps

Specifications

T8 Length:	24 (61.0), 36 (91.4), 48 (121.9) 72 (182.9) or 96 (243.8)
T5 Length:	23-1/8 (56.7), 34-1/8 (86.7), 46 (116.8) 68-3/8(173.6) or 92 (233.6)
Width:	2-1/8 (5.4)
Depth:	1-1/2 (3.8)



All dimensions are inches (centimeters) unless otherwise noted.

ORDERING INFORMATION

For shortest lead times, configure products using **standard options (shown in bold.)**

Example: Z 1 32 MVOLT GEB10IS

Series	Number of lamps	Lamp type	Voltage	Options				
Z Compact strip For tandem double-length unit, add prefix T. Example: TZ	1	17	17W T8 (24")	120	GEB10IS T8 electronic ballast, ≤10% THD, instant start (T8 only)	EL65	Emergency battery pack (nominal 725-1325 lumens) ^{2,3,4}	
		25	25W T8 (36")	277	GEB10RS T8 electronic ballast, ≤10% THD, rapid start ⁵	TILW	Tandem in-line wiring	
	Not included	32	32W T8 (48")	347	GEB10PS Electronic ballast, ≤10% THD, programmed start	CSA	CSA Certified	
		14T5	14W T5 (22")	MVOLT Others available	BILP High-efficiency .78 bf (low)	NOM	NOM Certified	
		21T5	21W T5 (34")		GLR Internal fast-blow fuse (add X for external) ²	MSI	Aisle motion sensor ^{2,3}	
		24T5HO	24W T5 HO (22")		GMF Internal slow-blow fuse (add X for external) ²	MSI360	360° motion sensor ^{2,3}	
		28T5	28W T5 (46")		PLR Plug in wiring, specify number of branch circuits and hot wires (A-black, B-Red, C-Blue, AB or AC)	MSE360LBZ	360° motion sensor; for mounting within row or at end of row ^{2,3,4}	
		39T5HO	39W T5 HO (34")		EL55	Emergency battery pack (nominal 390-700 lumens); consult factory for additional battery packs ^{2,3,4}		
		54T5HO	54W T5 HO (46")					

Accessories: Order as separate catalog number.

		For T8 fixtures only		For T5 fixtures only	
SQ_	Swivel-stem hanger (specify length in 2" increments)	Z8SMR48	Symmetric reflector, 48" white ¹	Z5SMR46	Symmetric reflector, 46" white ¹
ZSPRG	Tong and T-grid hanger (for 15/16" T-grid)	Z8ASR48	Asymmetric reflector, 48" white ¹	Z5ASR46	Asymmetric reflector, 46" white ¹
HC36	Hanger chain, 36"	Z8SMR36	Symmetric reflector, 36" white ¹	Z5SMR34	Symmetric reflector, 34" white ¹
ZACVH	Adjustable aircraft cable with hook	Z8ASR36	Asymmetric reflector, 36" white ¹	Z5ASR34	Asymmetric reflector, 34" white ¹
ZAC72	Adjustable aircraft cable, 72"	Z8SMR24	Symmetric reflector, 24" white	Z5SMR22	Symmetric reflector, 22" white
ZACF72	Adjustable aircraft cable with feed, 72"	Z8ASR24	Asymmetric reflector, 24" white	Z5ASR22	Asymmetric reflector, 22" white
ZAC120	Adjustable aircraft cable, 120"	WGZ48	48" wireguard, white ¹	WGZ46	46" wireguard, white ¹
ZACF120	Adjustable aircraft cable with feed, 120"	WGZ8SMR48	48" wireguard, white, for symmetric reflector ¹	WGZ5SMR46	46" wireguard, white, for symmetric reflector ¹
ZAC144	Adjustable aircraft cable, 144"	WGZ8ASR48	48" wireguard, white, for asymmetric reflector ¹	WGZ5ASR46	46" wireguard, white, for asymmetric reflector ¹
ZACF144	Adjustable aircraft cable with feed, 144"				

- Notes**
- 1 Order two for tandem double length fixtures.
 - 2 Specify voltage (available 120/277V).
 - 3 Not available with CSA Certified.
 - 4 Available with 4' and 8' lengths only.
 - 5 For 347V.

Z T8 / T5 Striplight

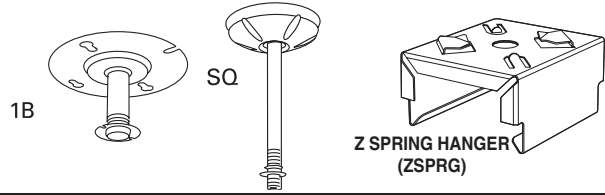
MOUNTING DATA

For unit or row installation, surface or stem mounting.

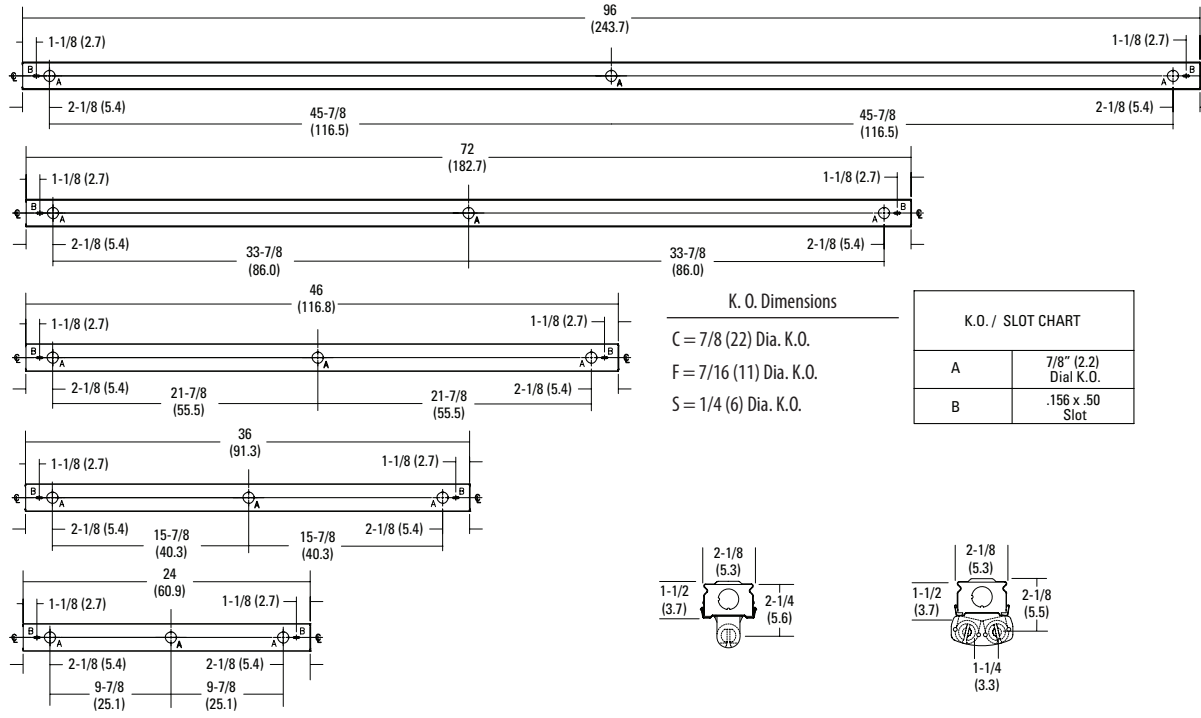
Unit installation — Minimum of two hangers required.

Row installation — One hanger per channel plus one per row required.

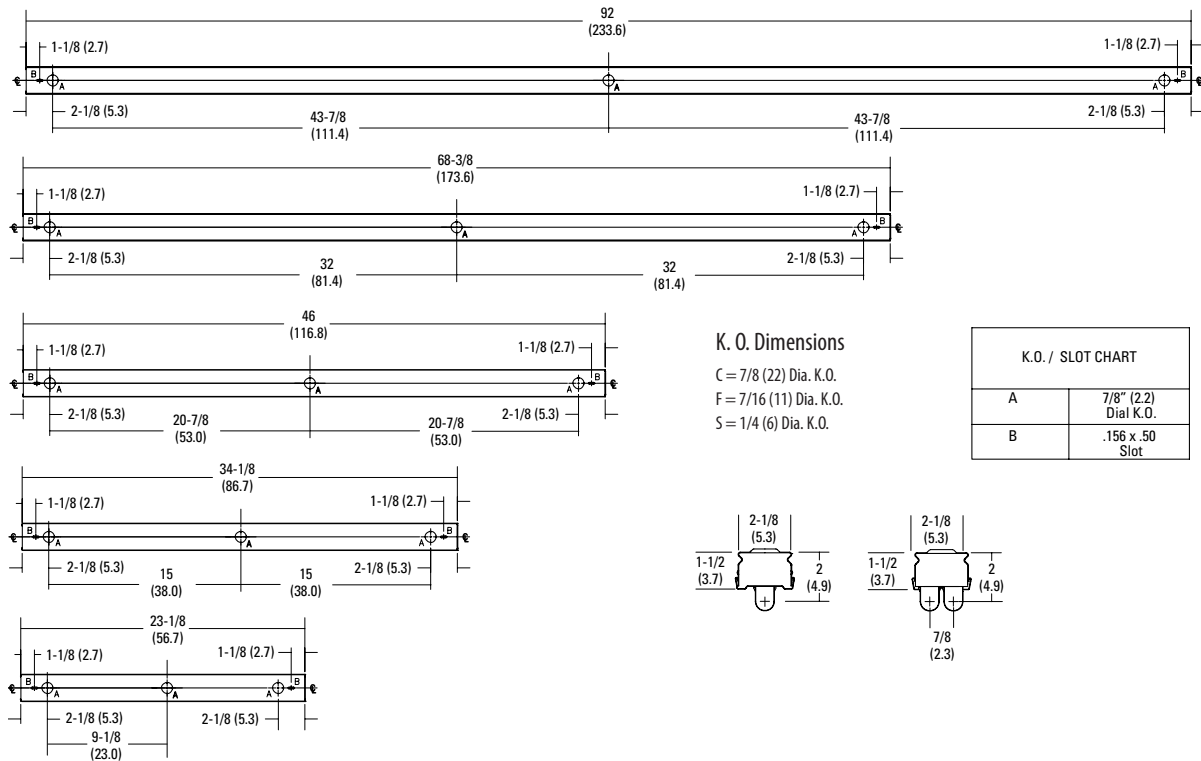
Review local codes when installing any product, as the minimum of 1 hanger per fixture may not satisfy your local building code.



T8 DIMENSIONS



T5 DIMENSIONS



PHOTOMETRICS

Calculated using the zonal cavity method in accordance with IESNA LM41 procedure. Floor reflectances are 20%. Lamp configurations shown are typical. Full photometric data on these and other configurations available upon request.

TEST NO: LTL17128
LUMINAIRE CATALOG NO.: Z 1 32 MVOLT GEB10IS
LUMENS PER LAMP: 2800

TEST NO: LTL17130
LUMINAIRE CATALOG NO.: Z 2 32 MVOLT GEB10IS
LUMENS PER LAMP: 2800

RCR	pf	pc	Coefficients of Utilization									
			80%			20%			50%			
			50%	30%	10%	50%	30%	10%	50%	30%	10%	
0	107	107	107	102	102	102	92	92	92			
1	87	82	77	83	78	74	75	71	68			
2	74	66	60	70	63	57	63	58	53			
3	64	55	48	61	53	46	55	48	43			
4	56	47	40	53	45	38	48	41	35			
5	49	40	33	47	39	32	42	35	30			
6	44	35	29	42	34	28	38	31	26			
7	40	31	25	38	30	24	34	27	22			
8	36	28	22	34	27	21	31	25	20			
9	33	25	19	31	24	19	29	22	18			
10	30	22	17	29	22	17	26	20	16			

RCR	pf	pc	Coefficients of Utilization									
			80%			20%			50%			
			50%	30%	10%	50%	30%	10%	50%	30%	10%	
0	100	100	100	95	95	95	86	86	86			
1	84	79	75	79	75	71	72	68	65			
2	71	64	59	68	62	56	61	56	52			
3	62	54	47	59	51	46	53	47	42			
4	54	46	39	51	44	38	46	40	35			
5	48	39	33	46	38	32	41	35	30			
6	43	34	29	41	33	28	37	30	26			
7	38	30	25	37	29	24	33	27	22			
8	35	27	22	33	26	21	30	24	20			
9	32	24	19	30	24	19	28	22	18			
10	29	22	17	28	21	17	26	20	16			

Zonal Lumen Summary			
Zone	Lumens	% Lamp	% Fixture
0° - 30°	356.4	12.7	13.5
0° - 40°	603.9	21.6	22.9
0° - 60°	1198.3	42.8	45.5
0° - 90°	2029.3	72.5	77.1
90° - 180°	602.8	21.5	22.9
0° - 180°	2632.0	94.0	100.0

Zonal Lumen Summary			
Zone	Lumens	% Lamp	% Fixture
0° - 30°	723.3	12.9	14.6
0° - 40°	1230.3	22.0	24.8
0° - 60°	2402.0	42.9	48.4
0° - 90°	3748.6	66.9	75.5
90° - 180°	1215.1	21.7	24.5
0° - 180°	4963.7	88.6	100.0

TEST NO: LTL17094
LUMINAIRE CATALOG NO.: Z 1 28T5 MVOLT GEB10PS
LUMENS PER LAMP: 2730

TEST NO: LTL17092
LUMINAIRE CATALOG NO.: Z 1 54T5HO MVOLT GEB10PS
LUMENS PER LAMP: 4450

TEST NO: LTL17070
LUMINAIRE CATALOG NO.: Z 2 54T5HO MVOLT GEB10PS
LUMENS PER LAMP: 4450

RCR	pf	pc	Coefficients of Utilization									
			80%			20%			50%			
			50%	30%	10%	50%	30%	10%	50%	30%	10%	
0	115	115	115	110	110	110	102	102	102			
1	94	89	83	90	85	81	83	79	75			
2	80	72	65	77	69	63	70	64	59			
3	69	60	52	66	58	51	61	54	48			
4	60	51	43	58	49	42	53	46	40			
5	54	44	37	51	42	36	47	40	34			
6	48	38	31	46	37	31	42	35	29			
7	43	34	27	41	33	27	38	31	25			
8	39	30	24	38	29	24	35	28	22			
9	36	27	21	34	26	21	32	25	20			
10	33	25	19	32	24	19	30	23	18			

RCR	pf	pc	Coefficients of Utilization									
			80%			20%			50%			
			50%	30%	10%	50%	30%	10%	50%	30%	10%	
0	109	109	109	106	106	106	99	99	99			
1	92	87	83	89	85	81	84	80	77			
2	79	72	66	76	70	64	72	66	61			
3	68	60	53	66	59	52	62	56	50			
4	60	51	44	58	50	44	55	48	42			
5	53	44	38	52	43	37	49	41	36			
6	48	39	32	46	38	32	44	36	31			
7	43	34	28	42	34	28	40	32	27			
8	39	31	25	38	30	25	36	29	24			
9	36	28	22	35	27	22	33	26	21			
10	33	25	20	32	25	20	30	24	19			

RCR	pf	pc	Coefficients of Utilization									
			80%			20%			50%			
			50%	30%	10%	50%	30%	10%	50%	30%	10%	
0	119	119	119	115	115	115	106	106	106			
1	99	93	88	95	90	85	88	84	80			
2	84	76	69	81	73	67	75	68	63			
3	73	63	56	70	61	54	64	57	51			
4	64	54	46	61	52	45	56	49	42			
5	56	46	39	54	45	38	50	42	36			
6	50	40	33	48	39	32	45	37	31			
7	45	36	29	44	35	28	40	33	27			
8	41	32	25	39	31	25	37	29	24			
9	37	28	22	36	28	22	34	26	21			
10	34	26	20	33	25	20	31	24	19			

Zonal Lumen Summary			
Zone	Lumens	% Lamp	% Fixture
0° - 30°	428.3	15.7	15.7
0° - 40°	723.9	26.5	26.6
0° - 60°	1398.5	51.2	51.4
0° - 90°	2278.6	83.5	83.7
90° - 180°	443.9	16.3	16.3
0° - 180°	2722.4	99.7	100.0

Zonal Lumen Summary			
Zone	Lumens	% Lamp	% Fixture
0° - 30°	809.8	18.2	19.5
0° - 40°	1366.0	30.7	32.9
0° - 60°	2625.8	59.0	63.2
0° - 90°	3806.5	85.5	91.6
90° - 180°	347.8	7.8	8.4
0° - 180°	4154.3	93.4	100.0

Zonal Lumen Summary			
Zone	Lumens	% Lamp	% Fixture
0° - 30°	1451.4	16.3	15.8
0° - 40°	2517.9	28.3	27.4
0° - 60°	5023.5	56.4	54.7
0° - 90°	7793.5	87.6	84.8
90° - 180°	1392.3	15.6	15.2
0° - 180°	9185.9	103.2	100.0