

[EMAIL](#) | [PRINT](#) | [PDF](#)

SP363-P6

SP363-P6

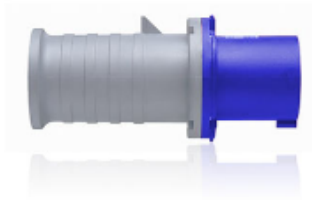
Item Description

63 Amp, 250 Volt, IEC 309-1 & 309-2, 2P, 3W, International-Rated Pin & Sleeve Plug, Industrial Grade, IP44, Splashproof - BLUE

Where To Buy

Market Channel

enter your zip code



Color: Blue

[Technical Information](#) [Support](#) [Related Products](#)

Technical Information

[TOP](#)

Electrical Specifications

Amperage: 63 Amp

Voltage: 250 Volt

Pole: 2

Wire: 3

Mechanical Specifications

Cord Range: .670 - 1.625

Product Features

Color: Blue

Material Specifications

Housing Material: Valox 357

Contact Carrier: Reinforced Nylon

Internal Cord Clamp Assembly: Nylon

External Cord Clamp Assembly: Valox 357

Grommet/Gasket: EPDM Rubber

External Screws: Acid-Proof S/S

Terminal Screws: Brass

Phase and Ground Pins: Brass

Sleeve Spring: Stainless Steel

Internal Screws: Zinc-plated steel

Standards and Certifications

CE Marking: Per low voltage directives 73/23/EEC, 93/68/EEC

IEC Rating: IEC 309-1 & 309-2

UPC Code: 07847706117
Country Of Origin: Please Contact Customer Service.

Product Lists

[Add to Product List](#)

[View Product List](#)

Quantity:

Support

[TOP](#)

[Dimensional Data](#)

[Instruction Sheet](#)

[IEC 60309 "Clock"](#)

Related Products

[TOP](#)



SP363-R6

63 Amp, 250 Volt, IEC 309-1 & 309-2,
2P, 3W, Outlet International-Rated Pin

ABOUT LEVITON

Leviton is the smart choice, delivering the most comprehensive range of solutions to meet the needs of today's residential, commercial and industrial customers in more than 90 countries across the globe. From simple switches and receptacles, to networking systems and smart home automation, Leviton exceeds market needs by delivering innovative products to create sustainable, intelligent environments through its electrical wiring devices, network and data center connectivity solutions, LED lighting and lighting energy management systems, and security and automation applications. For Leviton, it is clear the FUTURE IS ON.



PRODUCTS

- Connected Home
- Electric Vehicle Charging
- Electrical Wiring Devices
- GFCIs and AFCIs
- Lighting Controls
- Network Solutions
- Security & Automation
- Submetering
- Surge Protective Devices
- Temporary Power

SOLUTIONS

- Applications
- Brands
- Business
- Contech Lighting
- Intense Lighting
- Energy Management
- Government
- Home Solutions
- Industrial
- JCC Lighting Products
- Security & Automation

SUPPORT

- Contact Us
- Cross Reference
- Discussions
- Documents & Resources
- ez-Biz
- ez-Learn
- Knowledgebase
- Leviton Warranties
- Mobile Apps
- Product Support
- Quality Concerns