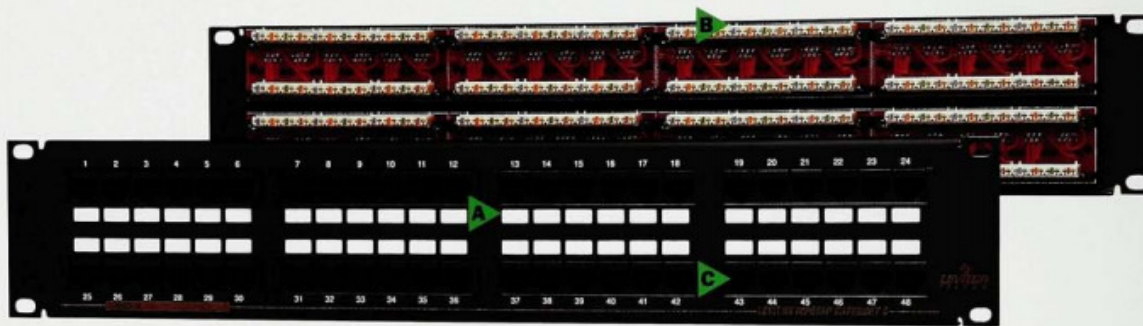


# FRAME – UTP



Cable management clips facilitate dressing and organizing the cable (included with the panel for use at the installer's option).

Writable/erasable surfaces and numbered jack ports help identify port assignments.

PC-mounted D-4 110 IDC connectors come in your choice of T568A or T568B wiring configurations.

Spring wire contacts are highest quality phosphor bronze, plated with 50 microinches hard gold over 100 microinches of nickel.

## INFOTAP® CATEGORY 5 PATCH PANELS

InfoTap Category 5 patch panels are factory-assembled in a variety of wiring configurations and port densities to meet the needs of high-speed data applications. The panels mount in standard 19" EIA equipment racks and

accommodate top, bottom or side cable entry. InfoTap panels are UL Listed; meet National Electrical Code® requirements and specifications for UL 1863; and fully comply with FCC Part 68 and TIA/EIA-568-A Category 5.



For port ID, use the writable/erasable surface above each jack, or the included Port ID Kit. The kit is color-coded for TIA-606 compliant field identification and compatible with P-Touch labeling systems.

**Materials:**

Panels are 16 gauge steel, black painted finish with white write-on areas silkscreened beside the jacks. Printed circuit boards and plastic components are fire-retardant materials rated UL 94V-0.

InfoTap® Category 5 Patch Panels			
Description	Wiring Configuration	Part Number	
12-port panels (1.75" H x 19.0" W)	T568B (WECO) T568A	49484-B12	49485-A12
16-port panels (1.75" H x 19.0" W)	T568B (WECO) T568A	49484-B16	49485-A16
24-port panels (1.75" H x 19.0" W)	T568B (WECO) T568A	49484-B24	49485-A24
32-port panels (3.5" H x 19.0" W)	T568B (WECO) T568A	49484-B32	49485-A32
48-port panels (3.5" H x 19.0" W)	T568B (WECO) T568A	49484-B48	49485-A48
64-port panels (7.0" H x 19.0" W)	T568B (WECO) T568A	49484-B64	49485-A64
96-port panels (7.0" H x 19.0" W)	T568B (WECO) T568A	49484-B96	49485-A96