

## Raceway Solutions for Healthcare Applications

Wallduct Raceway Systems are high capacity raceways for use in walls or ceilings. They can be mounted to the wall surface or flush with the wall to meet equipment layout and room designs. The lay-in feature for enclosure of wire and cable is ideal for use in healthcare rooms, under raised floors, or as a large capacity feeder for perimeter raceway. The cover plates are easily removed for wire and cable access. Wallduct Raceway Systems can also be used with Trenchduct to carry wire and cables from cabinets to egress points anywhere on the floor or wall. Wallduct Raceway Systems are also available in aluminum for applications that require nonferrous metal raceways such as X-ray and MRI scan rooms.



Illustration of an Aluminum Wallduct installation in an MRI Room.

### FEATURES & BENEFITS

- **Constructed of galvanized steel.** The 14-gauge galvanized steel has a material thickness of .0785, provides extra corrosion resistance, and is easily painted to match any room interior.
- **Available in non-magnetic aluminum material.** Meets requirements for MRI facilities in accordance with equipment manufacturer's specifications.
- **Interior couplings.** Offer improved aesthetics when surface mounted.
- **Complete line of fittings.** Lowers installation costs with fittings that can address field conditions and require minimal field modifications.
- **Bodies and covers shipped unassembled.** No disassembly required before starting system installation.
- **10" [254mm] and 18" [457mm] stock.** Readily available warehouse stock provides for immediate shipment of customer orders.
- **AutoCAD® capabilities for detailing project drawings.** Provides high quality detailing information with the option of electronic communication for a quicker, more accurate exchange of information.
- **Three standard widths.** Provide cable and wire requirements for most applications.
- **UL Listed (UL File #E66536).** Product matches equipment supplier's specifications.



Wallduct Raceway bodies are available in multiple widths and with flush and surface cover options.



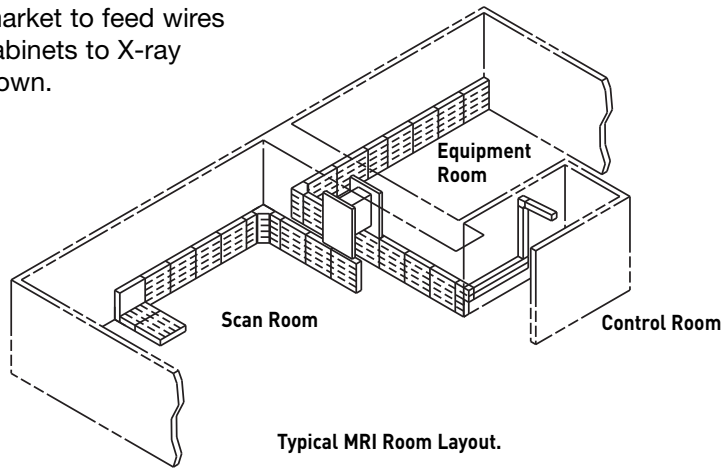
Wallduct Steel or Aluminum Raceway with lay-in features for enclosure of wire and cable.

## Wallduct Series Raceway System Layout

Wallduct is commonly used in the healthcare market to feed wires and cables from electric and communication cabinets to X-ray and MRI equipment. See typical application shown.

Because some healthcare equipment requires nonmetallic material in the surrounding area, aluminum Wallduct is used in scan rooms.

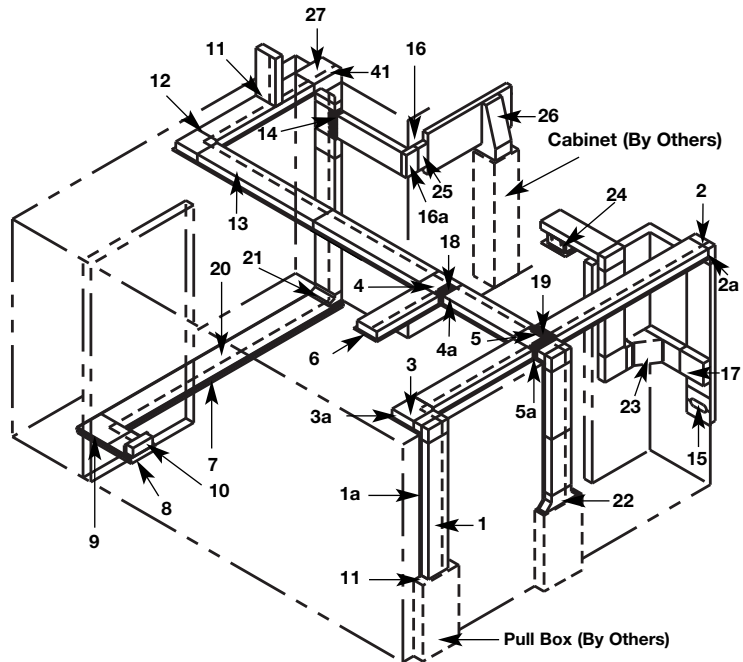
The equipment and control rooms generally use steel Wallduct.



### Wallduct and Trenchduct Legend

Item	Catalog No.	Description
1	WD10W350-60	5'-0" [1524mm] Straight Length.
1a	CP10-F30	30" [762mm] L Flush Cover Plate.
2	WD10W350-IL	Internal Wallduct Elbow.
2a	CP10-ILF	Internal Wallduct Elbow Cover Flush.
3	WD10W350-HL	Horizontal Wallduct Elbow.
3a	CP10-HLF	Horizontal Wallduct Elbow Cover Flush.
4	WD10W350-T	Wallduct T-Unit.
4a	CP10-TF	Wallduct T-Unit Cover Flush.
5	WD10W350-X	Wallduct X-Unit.
5a	CP10-XF	Wallduct X-Unit Cover Flush.
6	WD10W350-ECF	Wallduct End Closure.
7	VA12W250H-5	VA Style Trenchduct 12" Wide x 2 1/2" Deep [304mm x 63mm].
8	VA12W250H-EC	VA Style Trenchduct End Closure.
9	VA12W250H-LL	VA Style Trenchduct Horizontal Elbow (Left Hand).
10	VA12W-VR10	VA Style Trenchduct Vertical Riser.
11	WD10W350-CC/DO	Wallduct Cabinet Connector.
12	WD350-CP	Corner Partition.
13	WD350-P60	Straight Partition.
14	WD10W350-TUN	T-Unit Straight Tunnel.
15	WD10-ACPF	Access Cover Plate With Grommet.
16	WD10W350-EL	Wallduct External Elbow.
16a	CP10W350-ELF	Wallduct External Elbow Cover Flush.
17	WD10W350-FST	Wallduct Flush to Surface Transition.
18	WD10W350-LTUN	T-Unit Left Hand Tunnel.
19	WD10W350-XTUN	X-Unit Tunnel.
20	T250HZP-5	Trenchduct Partition.
21	VA12W-VL10	Trenchduct Vertical Riser
22	WD10W350-FCCF	Flanged Cabinet Connector Flush.
23	WD10W350-SWTS	Sweep Surface Tee.
24	WD-10CDO	Ceiling Drop Out.
25	WD350-R04	Wallduct Reducer.
26	WD18W350-SWCCS	Sweep Cabinet Connector Surface.
27	WD10W350-SES	Sweep Elbow Surface.

Wallduct can be installed in the wall exposing only the cover plate, or it can be wall mounted exposing the entire surface. Wallduct may also be installed overhead to connect cables/wires between rooms. Trenchduct can be used in combination with Wallduct as a feeder or for access points in the floor to feed equipment. Diagram below is for illustration only. It does not portray typical installation of products



### Wallduct Series Raceway Product Notes

To attach Wallduct Series Raceway to Trenchduct, use vertical risers as shown in the current version of ED738. All field cut openings in Wallduct Series Raceway should be grommeted as needed to protect edges from cutting cables and wires. Order Catalog # 686039-100FT.

Contact factory for availability of other sizes of Wallduct Series Raceway.

## Wallduct Series Raceway Bodies and Covers Ordering Information

Catalog No./Item	Description/Specifications	
<p><b>Bodies</b></p> <p style="text-align: center;">"A"</p> <p>WD06W350-60     6"     [152mm]                      WD10W350-60    10"    [254mm]                      WD18W350-60    18"    [457mm]</p> <p><b>Surface Covers</b></p> <p style="text-align: center;">"B"</p> <p>CP06-S30        6"     [152mm]                      CP10-S30        10"    [254mm]                      CP18-S30        18"    [457mm]</p> <p><b>Flush Covers</b></p> <p style="text-align: center;">"B"</p> <p>CP06-F30        8"     [203mm]                      CP10-F30        12"    [305mm]                      CP18-F30        20"    [508mm]</p>		
<p><b>Straight Wallduct With Removable Cover Plates –</b>                      Bodies include two coupling angles, two wire retainers, and assembly screws. Bodies are 5' [1.3m] long and can be field cut to length. Surface flush covers are 30" [762mm] long. Two covers required per body. See page 10 for wire/cable fill capacity information.</p>		

NOTE: To order aluminum products, add the letter "A" to the beginning of the catalog number.

## Wallduct Series Raceway Body Accessories Ordering Information

Catalog No./Item	Description/Specifications
<p>WD350-P60</p> <p><b>Straight Partition –</b>                      Used to separate services. Includes assembly screws for field installation.</p>	<p style="text-align: center;">"A"</p> <p><b>Wire Retainer –</b>                      Used to hold wires in place during installation and to close gap between cover plates if more than 1/8" [3.2mm]. Snap in place prior to installing cover plates. Two wire retainers are included with every straight body assembly.</p>
<p>WD350-CA</p> <p><b>Coupling Angle –</b>                      Used for connecting two pieces of Wallduct. Includes assembly screws. Two coupling angles included with every straight body assembly.</p>	<p>WD350-CP</p> <p><b>Corner Partition –</b> Used in horizontal elbow to form corner partition. Assembly screws included. Two wire retainers are included with every straight body assembly.</p>

NOTE: To order aluminum products, add the letter "A" to the beginning of the catalog number.