



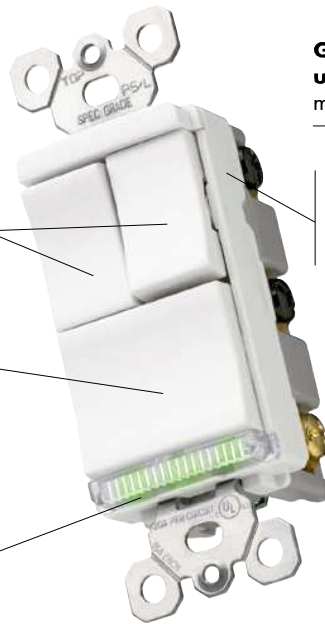
# Switches TradeMaster® Decorator Combination Switches

**Unique “Up/Down” switches** match the look and feel of standard Decorator switches.

**Easy-to-use oversized main switch** for primary load.

**Patented Snap-In Light Module** (sold separately) transforms a combination switch into an illuminated switch in seconds.

**Identification modules** (sold separately) identifies each switch — light, fan, heat lamp.



**TM8113WCC**  
Shown with Snap-In Light Module TM8LMCC.

**Fully rounded back body** protects wires from being damaged by sharp edges.

**Ground screw position under the end of the strap** minimizes the risk of contact.

**Impact-resistant face and body.**

**Full wraparound metal strap**, commercial grade with lock-in tabs.

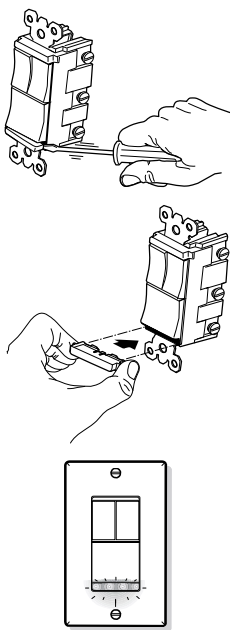


**All screws are tri-drive.**

**Patented split circuit tab** — easily accessible, and can be reinstalled without a tool.

**External screw-pressure-plate back and side wired.** Accepts #12 and #14 AWG.

### Adding a Snap-In Light Module



### Features

- Module simply snaps-in for easy installation.
  - Can be installed with the following devices: TM811, TM813, TM833, TM818, TM838, TM8111, TM8113, TM81111, TM8118 and the LS Series of Dimmers & Fan Speed Controls (see Pages M-13 through M-15).
- Snap-In Light Module:**
- Lights when OFF.
  - Uses energy-efficient 1/4 watt LED light.
  - LED light will not generate heat and will last on average 47 years.



Catalog Number	Rating A. VAC	Color	3rd Party Compliance
			cULus cULus
<b>Snap-In Light Module</b>			
TM8LMCC	15 120/125	Clear	•
<b>Identification Modules</b>			
TM8IDICC	— —	Ivory	
TM8IDWCC	— —	White	
TM8IDCC	— —	Brown	
TM8IDBKCC	— —	Black	
TM8IDLACC	— —	Light Almond	

For Decorator Hallway Lights and Combination Devices, see Page D-24.

All devices listed on this page conform to NEMA WD-1 and WD-6.