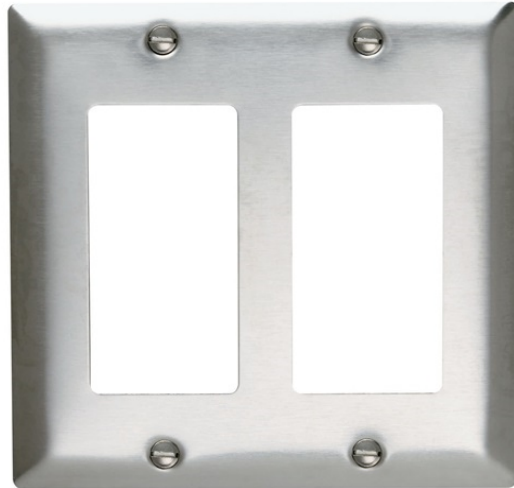


Decorator Openings, Two Gang, 302 Stainless Steel

SS262



Smooth Metal Wall Plate 2gang Decorator
302 Stainless Steel



features & benefits

- Type 302 Stainless Steel, non-magnetic: .032" nominal thickness.
- Brushed finish.
- This alloy contains 18% chromium and 8% nickel for superior resistance to corrosion.
- Recommended for use in food processing plants, dairies, chemical plants, and other industrial, institutional, and commercial applications where corrosive atmospheres exist.
- Constructed of corrosion-resistant stainless steel, brass, aluminum, chrome, brushed bronze, or galvanized steel.
- Standard, Jumbo, and Tandem plates available, as well as special Panel plates up to 5-gangs high and 10-gangs wide.
- Packaged in protective film, with finish-matching screws.
- Variety of special plated finishes.
- Paintable to match plastic plates.
- Can be silk-screened or engraved, and custom punched with over 300 opening styles.

specifications

General Info

Size: Standard
Style: Decorator

Listing Agencies/Third Party Information

CSA Listing Info: Yes
CUL Listing No: No
cU Lus: No
cU Rus: No
Federal Spec: No
UL Listing No: Yes
U N SPS C: 39121704
U R: No

Dimensions

Weight: 0.14116

Technical Information

Material: 302 Stainless Steel
Capacity: 2-gang

Buy American Act Compliance

Country of Origin: UNITED-STATES-OF-AMERICA
Buy American Act Status: Buy American Act Compliant