



designed to be better.

[Search](#)

# Old Work Switch and Outlet Box with Quick/Click

S352W

Triple Gang, Old Work Switch and Outlet Box with Swing-Bracket for mounting. Adjusts from 1 1/4" down to 1/8". Six Auto/Clamps for Each End. 10 pack.

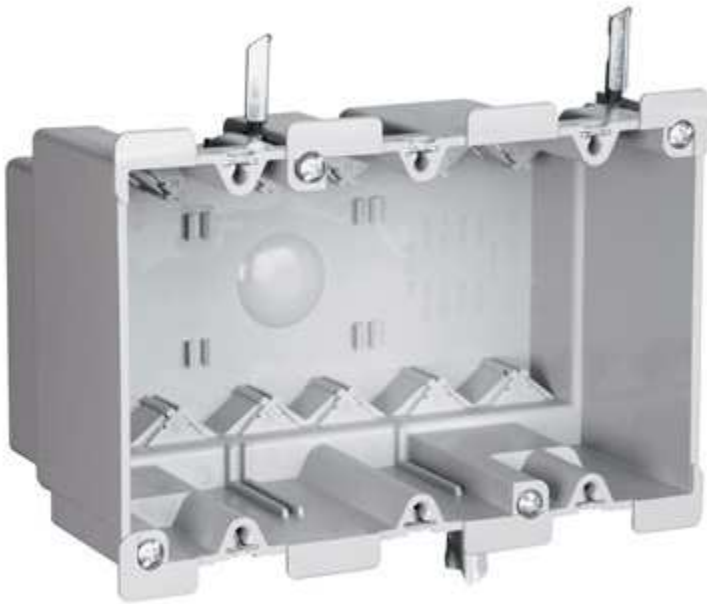
[Submit Query](#)

Where to buy

[Submit Query](#)

0

[Email](#) [Print](#)



Representative image shown.



- [SPECIFICATIONS](#)
- [RESOURCES](#)

## features & benefits

- Quick/Click feature secures devices quickly and easily.
- Does not strip when over-torqued.
- 6 Auto/Clamps on each end eliminate the need for separate cable clamps.
- Metal swing bracket for quick mounting in existing walls.
- Big 52 cubic inch capacity.
- Divider plate (LVDIV1, sold separately) used when installing line and low-voltage devices or multiple 277 volt devices in same box.
- Easy installation, rectangular cutout.

- Swing bracket adjusts from 1 1/4 inch to 1/8 inch.
- Durable, impact-resistant thermoplastic box.

## Top 5 Resources

-  Boxes (Brochure)
-  Plastic Boxes (Installation Instructions)

## specifications

### General Info

- Product Series: Slater
- Type: Switch, Outlet Box
- Special Features: Old Work, Quick/Click

## Listing Agencies/Third Party Information

- CSA Listing Info: No
- CUL Listing No: No
- cU Lus: Yes
- cU Rus: No
- Federal Spec: No
- UL Listing No: No
- U N SPS C: 39121308
- U R: No

## Dimensions

- Depth (U S): 3.03125
- Length: 3.75
- Volume: 52.0
- Width U S: 5.875

## Technical Information

- Material: Plastic

## Buy American Act Compliance


- Country of Origin: UNITED STATES OF AMERICA
- Buy American Act Status: Buy American Act Compliant
- 



## resources BROCHURE

-  BoxesPDF (1mb)

## INSTALLATION INSTRUCTIONS

 Plastic BoxesPDF (2.69mb)