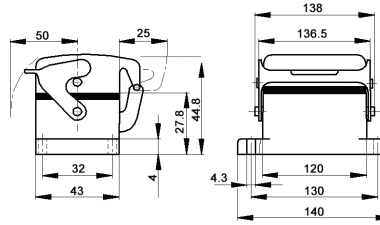
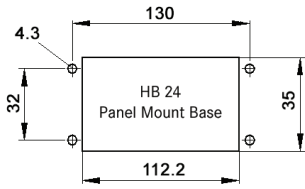


# EPIC® HB 24 Panel Mount Bases

Single Lever



All dimensions are in mm.

<b>Technical Data</b>	
<b>Specifications:</b>	DIN 43652
<b>Protection Class:</b>	NEMA 4, NEMA 12, IP65
<b>Temperature Range:</b>	-40°C to +125°C
<b>Material:</b>	Powder-coated aluminum alloy

Description	Part Number
Panel Mount Base	10102900
Panel Mount Base with Dust Cover	10103900

**Complete the Installation**



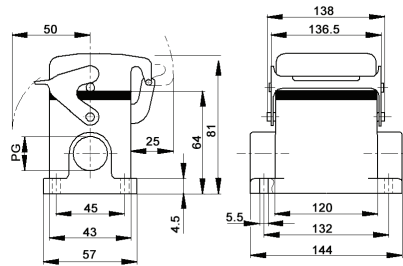
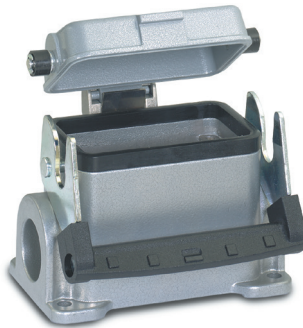
HB Dust Covers: page 415

**Approvals**

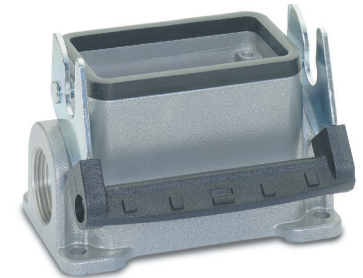


# EPIC® HB 24 Surface Mount Bases

Single Lever



All dimensions are in mm.



<b>Technical Data</b>	
<b>Specifications:</b>	DIN 43652
<b>Protection Class:</b>	NEMA 4, NEMA 12, IP65
<b>Temperature Range:</b>	-40°C to +125°C
<b>Material:</b>	Powder-coated aluminum alloy

PG	Size of Entry		PG	Part Number		Complete the Installation: SKINTOP® Strain Relief, page 368			
	NPT	Metric		NPT	Metric	PG Nylon	PG Metal	Metric Nylon	Metric Metal
<b>2 Entries</b>									
21	3/4"	25	101059	101059NP	19105900	53015050	52015750	53111030	53112030
<b>1 Entry</b>									
21	3/4"	25	101049	101049NP	19104900	53015050	52015750	53111030	53112030
<b>2 Entries with Dust Cover</b>									
21	3/4"	25	101099	101099NP	19109900	53015050	52015750	53111030	53112030
<b>1 Entry with Dust Cover</b>									
21	3/4"	25	101079	101079NP	19107900	53015050	52015750	53111030	53112040

**Approvals**



**Complete the Installation**

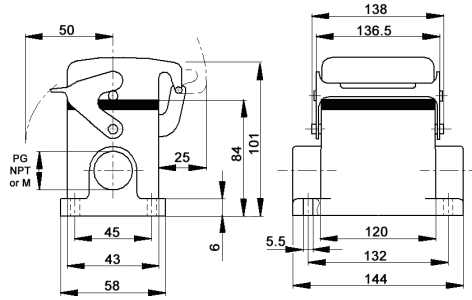


HB Dust Covers: page 415

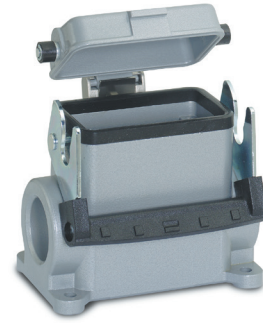
Photographs are not to scale and are not true representations of the products in question. For current information go to our website. If not otherwise specified, all values relating to the product are nominal values.

# EPIC® HB 24 High Profile Surface Mount Bases

## Single Lever



All dimensions are in mm.



### Technical Data

<b>Specifications:</b>	DIN 43652	<b>Protection Class:</b>	NEMA 4, NEMA 12, IP65
<b>Temperature Range:</b>	-40°C to +125°C	<b>Material:</b>	Powder-coated aluminum alloy

PG	Size of Entry		PG	Part Number			Complete the Installation: SKINTOP® Strain Relief, page 368			
	NPT	Metric		NPT	Metric	Metric	PG Nylon	PG Metal	Metric Nylon	Metric Metal
<b>2 Entries</b>										
21	3/4"	25	701612	701612NP	79161200	53015050	52015750	53111030	53112030	
29	1"	32	701614	701614NP	79161400	53015060	52015760	53111040	53112040	
<b>1 Entry</b>										
21	3/4"	25	701602	701602NP	79160200	53015050	52015750	53111030	53112030	
29	1"	32	701604R	701604NP	79160400	53015060	52015760	53111040	53112040	
<b>2 Entries with Dust Cover</b>										
21	3/4"	25	701652	701652NP	79165200	53015050	52015750	53111030	53112030	
29	1"	32	701654	701654NP	79165400	53015060	52015760	53111040	53112040	
<b>1 Entry with Dust Cover</b>										
21	3/4"	25	701642	701642NP	79164200	53015050	52015750	53111030	53112030	
29	1"	32	701644	701644NP	79164400	53015060	52015760	53111040	53112040	

### Approvals

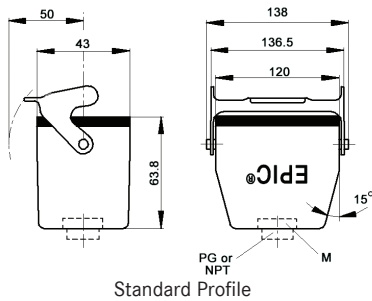


**Complete the Installation**

HB Dust Covers: page 415

# EPIC® HB 24 Cable Coupler Hoods

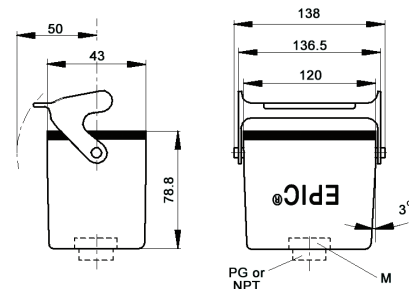
## Single Lever



Standard Profile



All dimensions are in mm.



High Profile

### Technical Data

<b>Specifications:</b>	DIN 43652	<b>Protection Class:</b>	NEMA 4, NEMA 12, IP65
<b>Temperature Range:</b>	-40°C to +125°C	<b>Material:</b>	Powder-coated aluminum alloy

PG	Size of Entry		PG	Part Number			Complete the Installation: SKINTOP® Strain Relief, page 368			
	NPT	Metric		NPT	Metric*	Metric	PG Nylon	PG Metal	Metric Nylon	Metric Metal
<b>Standard Profile</b>										
21	3/4"	25	101279	101279NP	19127900	53015050	52015750	53111030	53112030	
29	1"	32	101179	101179NP	19117900	53015060	52015760	53111040	53112040	
<b>High Profile</b>										
21	3/4"	25	701424	701424NP	79142400	53015050	52015750	53111030	53112030	
29	1"	32	701426	701426NP	79142600	53015060	52015760	53111040	53112040	

\* Metric hoods do not come with a neck.

### Approvals



**Complete the Installation**

HB Dust Covers: page 415

Photographs are not to scale and are not true representations of the products in question. For current information go to our website. If not otherwise specified, all values relating to the product are nominal values.