

Multi-Bit Screwdrivers/Nut Drivers

5-in-1 Screwdriver/Nut Driver

Additional Feature:

- End of handle is marked to quickly identify tool.



32476

| Cat. No. | Contains | Weight (lbs.) |
|----------|---|---------------|
| 32476 | 5/16" nut driver, #1 and #2 Phillips, 9/32" slotted and 3/16" slotted | .35 |

10-in-1 Screwdriver/Nut Driver

Additional Feature:

- End of handle is marked to quickly identify tool.



TORX® is a registered trademark of Acument Intellectual Properties, LLC.



32477

| Cat. No. | Contains | Weight (lbs.) |
|----------|--|---------------|
| 32477 | 5/16" and 1/4" nut drivers, #1 and #2 Phillips, 1/4" and 3/16" slotted, T10 and T15 TORX®, #1 and #2 square-recess | .35 |

11-in-1 Screwdriver/Nut Driver

Additional Feature:

- Integrated screwdriver/nut driver shaft holds 8 popular tips and converts to 3 nut driver sizes.
- End of handle is marked to quickly identify tool.



TORX® is a registered trademark of Acument Intellectual Properties, LLC.



32500

| Cat. No. | Contains | Weight (lbs.) |
|----------|--|---------------|
| 32500 | 3/8", 5/16" and 1/4" nut drivers, #1 and #2 Phillips, 1/4" and 3/16" slotted, T10 and T15 TORX®, #1 and #2 square-recess | .44 |

11-in-1 Screwdriver/Nut Driver with Schrader® Valve Removal/Installation Bit

Additional Features:

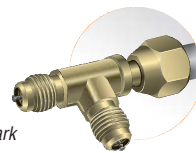
- Includes unique style bit for installation/removal of common TR-4 Schrader® valves and aggressive thread extractor tip for backing out broken cores.
- Great for HVAC and other industrial applications.



Schrader® is a registered trademark of Schrader International, Inc.



32527



| Cat. No. | Contains | Weight (lbs.) |
|----------|--|---------------|
| 32527 | 3/8", 5/16" and 1/4" nut drivers, #1 and #2 Phillips, #1 square and #2 square, 1/4" and 3/16" slotted, Schrader® valve core removal/installation – extractor | .44 |

10-in-1 Folding Screwdriver/Nut Driver

- Conveniently folds up for easy storage or to fit into your pocket.
- Each driver arm contains four interchangeable bit styles and two nut drivers.
- Unfold each driver arm up to a full 180° for straight on driving power, or at 90° for extra leverage on stubborn fasteners.
- The quick release button easily unlocks a fully extended driver arm.

10-FOLD®



32535

TORX®



32536

TAMPERPROOF TORX®



32537

FRACTIONAL HEX



32538

METRIC HEX



32539

TORX® is a registered trademark of Acument Intellectual Properties, LLC.

| Cat. No. | Handle Color | Description | Weight (lbs.) |
|----------|--------------|--|---------------|
| 32534 | blue | 5/16" & 1/4" nut drivers, #1 and #2 Phillips, 1/4" & 3/16" slotted, #1 and #2 square-recess, and Schrader® valve core removal/installation – extractor | 0.37 |
| 32535 | black | 5/16" & 1/4" nut drivers, #1 and #2 Phillips, 1/4" & 3/16" slotted, T10 & T15 TORX®, and #1 and #2 square-recess | 0.37 |
| 32536 | green | 5/16" & 1/4" nut drivers, T6, T7, T8, T10, T15, T20, T25, T27 TORX® | 0.37 |
| 32537 | green | 5/16" & 1/4" nut drivers, T7, T8, T9, T10, T15, T20, T25, T27 TORX® | 0.37 |
| 29538 | red | 5/16" & 1/4" nut drivers, 1/16", 5/32", 3/32", 7/64", 1/8", 9/64", 5/32", 3/16" standard hex | 0.27 |