

# EXPANSION JOINTS

CONDUIT FITTINGS

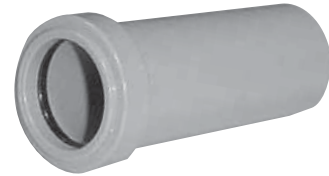
## TA SPECIAL EXPANSION JOINT

Size (inches)	Part Number	Product Code
2-1/2	EJ40TA	077398



## ONE-PIECE EXPANSION COUPLING

Size (inches)	Part Number	Product Code
1/2	OPEJ10	077018
3/4	OPEJ15	077019
1	OPEJ20	077053
1-1/4	OPEJ25	077054
1-1/2	OPEJ30	077061
<b>2</b>	<b>OPEJ35</b>	<b>077063</b>



## EXPANSION & DEFLECTION FITTING ASSEMBLIES

Size (inches)	Part Number	Description	Product Code
2	SE-J-35	Complete Assembly	077889
3	SE-J-45	Complete Assembly	077890
4	SE-J-55	Complete Assembly	077891



The National Electrical Code requires the use of expansion fittings for RNC to compensate for thermal expansion & contraction. For more information consult the NEC 2002 Article 352.44 and review the expansion and contraction information on pages 11, 12 and 13 of this brochure.