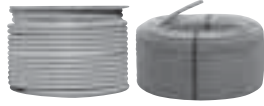


## Kwikon ENT - Blue Stripe



	Size (in)	Length (ft)	Product Code	Weight lbs/pkg
Reel	1/2	1500	012002	165
	3/4	1000	012011	158
	1	750	012021	160
	1-1/4	1000	012047	193
	1-1/2	750	012033	205
	2	500	012044	220
Coil	1/2	200	012031	20
	3/4	100	012040	12.5
	1	100	012041	17
	1-1/4	500	012046	76
	1-1/2	300	012032	50.5
	2	225	012043	69.5

Wrapped in plastic, coils are easily dispensed from the center.

## Kwikon ENT Reels - Color Coded

Size (in)	Length (ft)	Product Code			Weight lbs/reel
		Red	Yellow	Blue	
1/2	1500	012305	012335	012002	165
3/4	1000	012307	012337	012011	158
1	750	012310	012340	012021	160
1-1/4	1000	012037	012038	012047	193
1-1/2	750	012035	012036	012033	205
2	500	012039	012042	012044	220

## Kwikon ENT - 10' Sticks with Blue Stripe

Size (in)	Length (ft)	Product Code	Crate Qty
1/2	10	012001	3,600
3/4	10	012010	2,200
1	10	012034	1,800

All Kwikon ENT is UL Listed for use in walls, floor slabs and ceilings, as outlined in Article 362 of the 2005 NEC Code.

## Storage of Kwikon ENT Tubing

Manufacturer recommends that ENT tubing should not be stored outdoors where subjected to direct sunlight without protective covering, i.e. packaging or tarps.



E 122659



TC-13

## Kwikon Coupling



Size (in)	Part Number	Product Code
1/2	KC10	089000
3/4	KC15	089001
1	KC20	089002
1-1/4	KC25	189670
1-1/2	KC30	189671
2	KC35	189672

## Kwikon Connector For Concrete Encasement



Size (in)	Part Number	Product Code
1/2	KTA10	089006
3/4	KTA15	089007
1	KTA20	089008
1-1/4	KTA25	189680
1-1/2	KTA30	189681
2	KTA35	189682

## Kwikon Snap-in Connector



Size (in)	Part Number	Product Code
1/2	KTS10	089146
3/4	KTS15	089147
1	KTS20	089148

## Kwikon Transition Coupling



Size (in)	Part Number	Product Code
1/2	KTC10	089012
3/4	KTC15	089013
1	KTC20	089014



E 59258, E 119384



TC-13



C22.2 No. 227.1

