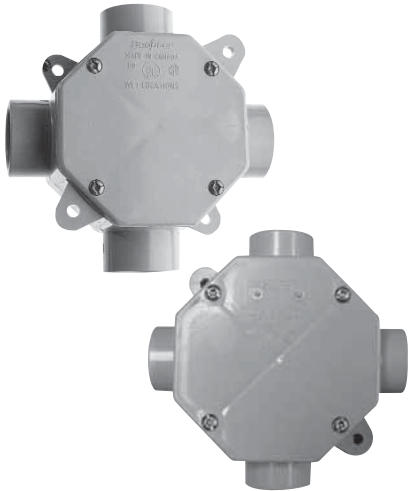


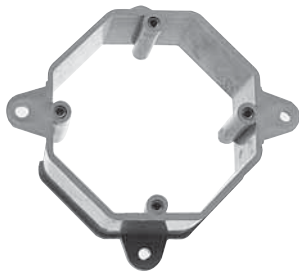
OCTAGONAL BOXES *



Octagonal Boxes are shipped complete with cover, gasket, 4 reducing bushings (3/4" x 1/2"), and 4 sealing caps to be installed from inside box to seal off unused entry hubs.

Size (inches)	Part Number	Hub Size (inches)	L (inches)	H (inches)	Volume (in ³)	Product Code
4 x 1-1/2	OB15/10	1/2 - 3/4	4	1.680	15.5	077983*
4 x 2-1/8	OB20	1	4	2.250	21.5	077984*

OCTAGONAL BOX EXTENSION RINGS



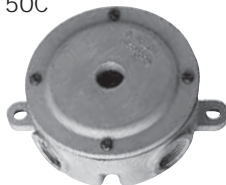
Size (inches)	Part Number	Product Code
4 x 1 deep	XR20	077989
4 x 2 deep	XR35	077990

Note: Octagonal Boxes are not designed for supporting light fixtures.

THREADED JUNCTION BOXES



LFB150C



LFB150T

Scepter's Threaded Junction Boxes are corrosion resistant, non-conductive and incorporate high-temperature silicone gaskets and brass hardware to withstand extreme temperature variations. Manufactured from glass-reinforced thermoplastic polyester resin, these boxes can endure extreme temperatures (material temperature range -40°F to +302°F).

Size (inches)	Part Number	Product Code
4 - 3/4" threaded hubs	LFB150C	077250
4 - 3/4" threaded hubs c/w 1/2" threaded hole in cover	LFB150T	077251