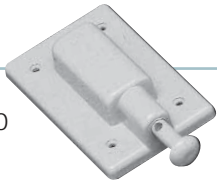


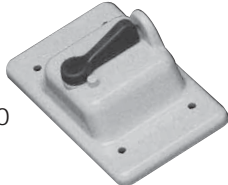
## SINGLE GANG WEATHERPROOF COVERS

Weatherproof covers, with lids closed, are UL listed for wet locations.

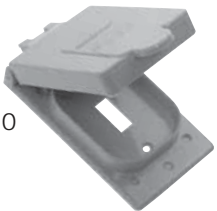
VPT15/10



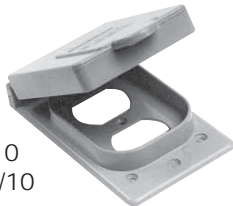
VSC15/10



WTG15/10



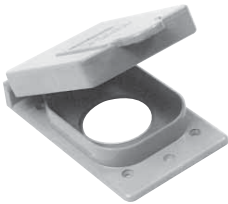
WDR15/10  
RWDR15/10



WGF15/10  
RWGF15/10



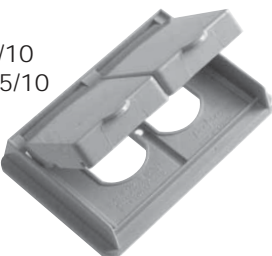
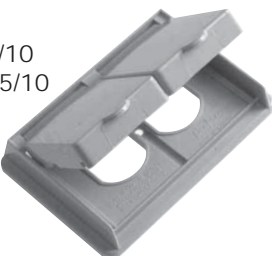
WTL15  
WTL20  
WTL30



WTL50



WDRE15/10  
RWDRE15/10



### Description

Device  
Opening (in)

Part  
Number

Product  
Code

Plunger-style Switch Cover

VPT15/10

077630

Toggle Switch Cover

VSC15/10

077612

Grey Toggle Switch Cover

WTG15/10

077606

Grey Duplex Receptacle

WDR15/10

077993

White Duplex Receptacle

RWDR15/10

077786

Grey Ground Fault Receptacle

WGF15/10

077785

White Ground Fault Receptacle

RWGF15/10

077787

Single Receptacle Device 15 AMP

1.375

WTL15

077992

Single Receptacle Device 20 AMP

1.625

WTL20

077994

Single Receptacle Device 30 AMP

1.722

WTL30

077991

Single Receptacle Device 50 AMP

2.187

WTL50

077951

Grey Double Door Duplex Receptacle

WDRE15/10

077087

White Double Door Duplex Receptacle

RWDRE15/10

077408

Gasket for W Series Cover  
(except WDRE & RWDRE)

GASKW

077755

Gasket for WDRE & RWDRE Covers

GASKDD

072225

\* Gaskets are included with all weatherproof covers.