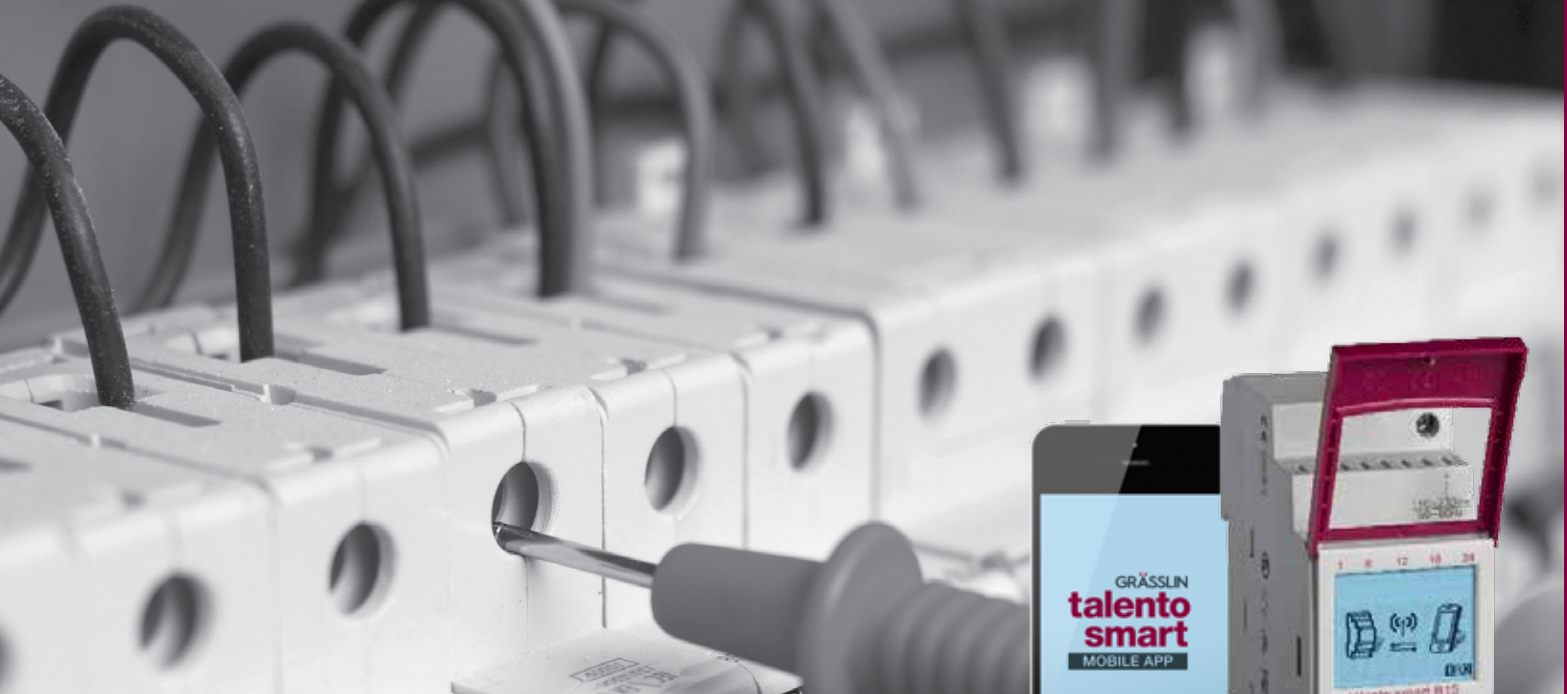


talento smart Series

DIN Rail Time Switch



The talento smart series is the world's first line of full-featured, DIN rail time switches with integrated Bluetooth® low energy wireless connectivity designed for unparalleled user convenience.

FEATURES

- Integrated Bluetooth Wireless Connectivity
- Intuitive, Full-featured iOS and Android App with Templates
- Recurring Date Programming Utilizing Wildcards
- Integrated Hour Meter
- Astronomic, 365-Day Scheduling (C Series)
- Multiple Programming Priority Structures (C Series)

VALUE & BENEFITS

- Quick Programming via Intuitive User Interface
- Easy Installation through Configuration Wizard
- Wireless Programming and Control
- Modular Design for Future Expandability

APPLICATIONS

- Custom Lighting Control Panels
- Pump & Motor Control Panels
- Signage Control Panels

ACCESSORIES

E200DIN Type 3R Enclosure with Integrated DIN Rail

Series		Basic		Advanced	
Model Number		B15	B25	C15	C25
No. of Circuits		1-Circuit	2-Circuit	1-Circuit	2-Circuit
Scheduling Capabilities	24-Hours	Yes	Yes	Yes	Yes
	7-Day	Yes	Yes	Yes	Yes
	365-Day	Limited to 1-2 Programs		Yes	Yes
	Priority Event Programming	No	No	Yes	Yes
Memory Size	No. of Events	100	100	500	500
	No. of Programming	10	10	50	50
Event Types	ON/OFF	Yes	Yes	Yes	Yes
	Random	No	No	Yes	Yes
	Pulse	No	No	Yes	Yes
	Cycle	No	No	Yes	Yes
	Astronomic	No	No	Yes	Yes
Electrical Ratings	Voltage	120-240 VAC			
	Amperage	15 A, 120 VAC / 10 A, 240 VAC			
	Zero Crossing	Yes	Yes	Yes	Yes
Bluetooth		Yes	Yes	Yes	Yes

Designed and manufactured in Germany.





Scan the QR code with your smartphone or tablet to see a demo of talento smart.

Check out our demo videos on [YouTube](#).

Electrical Data

Load incandescent / halogen lamp	2,600 VA
Load fluorescent lamps	730 VA (serial compensated) 1.000 VA (Duo-switch) 1.000 VA (non-compensated) 1.000 VA (serial compensated)
Load compact fluorescent lamp	14 x 23 W, 16 x 20 W, 16 x 15 W, 18 x 11 W, 22 x 7 W
Load LED-lamps < 2 W	MAX 30 W
Load LED-lamps 2-8 W	MAX 100 W
Load LED-lamps > 8 W	MAX 120 W
Load sodium-vapor lamp - non-compensated	1 x 400 W, 2 x 250 W
Load sodium-vapor lamp - serial compensated	1 x 250 W (32 µF), 1 x 400 W (45 µF), 2 x 150 W (20 µF)
Load mercury-vapor lamp - serial compensated	1 x 400 W (25 µF), 1 x 700 W (40 µF), 2 x 250 W (18 µF), 4 x 125 W (10 µF), 6 x 50 W (7 µF)
Load mercury-vapor lamp - non-compensated	1 x 700 W, 2 x 250 W, 4 x 125 W
Power consumption	< 1 VA (standby-mode)
Accuracy	± 0.3 seconds/day
Time basis	Quartz
Power reserve	8-years, programs saved in EEPROM

Communication Method

Radio signal	Bluetooth 4.0
--------------	---------------

Operating Specifications

Manual switch	Automatic mode, fix ON/OFF, override
Tampering protection	PIN-code, sealable
Programming	Time switch, mobile devices
Hours Meters	Hour counter with maintenance mode

Display and Format

Display illumination	White
Time format	12 Hr (AM/PM), 24 Hr (factory pre-set)
Daylight savings time adjustment	Automatic, date-based, can be deactivated
Status indicator	Switch position display

Environmental Conditions

Temperature (operation)	-4° F to 131° F (-20° C to 55° C)
-------------------------	-----------------------------------

General Specifications

Dimensions	3.54"x 1.40"x 2.36" (90 mm x 35.5 mm x 60 mm)
Weight	6 oz / 170 g
Material	Thermoplastics, self-extinguishing & high-temperature resistant
Mounting	DIN rail
Languages	CS, DA, DE, EN, ES, FI, FR, HU, IT, NL, NO, PL, PT, SV

Compliance with Standards

Protection type	IP20
Agency Approval	cULus
Warranty	1-year