



## PJB Series

### Pool/Spa Junction Box & Mounting Bracket

These polymeric, water tight, multi-fixture Junction Boxes are especially designed for pools, pool-spa combinations and landscape applications. The PJB4175 provides a safe and reliable connection for up to four lights, while the PJB2175 supports up to two lights. They will accommodate flexible cords from #16-3 up to #12-3 and #10-3 in any combination and non-metallic conduits from 1/2 to 1 inch, including one for supply conductor feed. An optional wall/post mounting bracket is also available.

#### Applications

- Pool Lights
- Spa Lights
- Landscape Lights

#### Specifications

**Case** – Outdoor grade plastic. PJB4175 - 7.5" L x 4.75" W x 5.0" D. PJB2175 - 7.0" L x 3.0" W x 4.0" D

**Note:** Bracket sold separately.

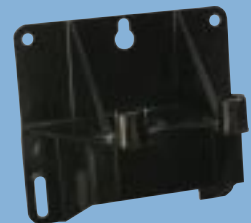
Model #	Description	Light Connection	Case Qty.	Shipping Weight
PJB2175	Pool/Spa Light Junction Box	2	24	19.2 lbs (8.6 kg)
PJB4175	Pool/Spa Light Junction Box	4	12	13.2 lbs (6.0 kg)
PA114	Wall/Post Mounting Bracket	—	10	5 lbs (2.3 kg)



**PJB4175**



**PJB2175**



**PA114**

**PJB2175**



**PJB4175**

